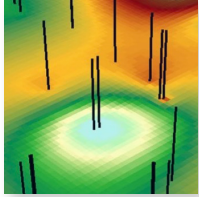


### Services



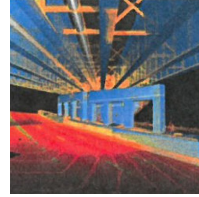
**3D COMPUTER MODELING**



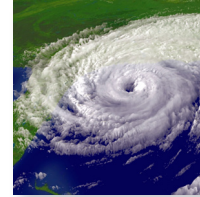
**AFFORDABLE HOUSING DESIGN**



**AIR QUALITY SERVICES MONITORING & SUPPORT**



**BIM & 3D MODELING SOLUTIONS**



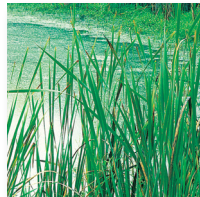
**COASTAL RESILIENCY ENGINEERING**



**DISASTER RESPONSE**



**DUE DILIGENCE & REGULATORY PERMITTING**



**ECOLOGY NATURAL RESOURCES**



**ENVIRONMENTAL HEALTH & SAFETY (EHS)**



**ENVIRONMENTAL REMEDIATION**



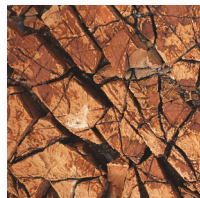
**ENVIRONMENTAL SITE ASSESSMENT (ESA)**



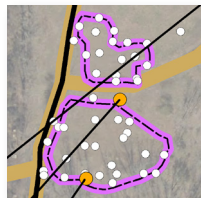
**FEDERAL PROGRAMS & CONTRACTS**



**FLOOD HAZARD GRANT PROGRAM**



**GEOTECHNICAL ENGINEERING**



**GIS - GEOGRAPHICAL INFORMATION SYSTEMS**



**HABITAT MITIGATION**



**INDUSTRIAL HYGIENE**



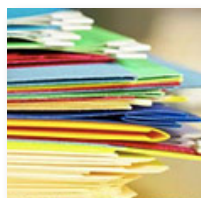
**LAND SURVEYING & HD LASER SCANNING**



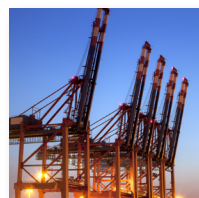
**LANDSCAPE ARCHITECTURE**



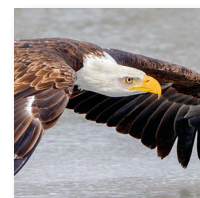
**LEAD & ASBESTOS REMEDIATION**



**LS RP CONSULTING**



**MARINE & WATERFRONT ENGINEERING**



**NEPA & STATE EQUIVALENT ASSESSMENTS**



**NYC ENVIRONMENTAL REVIEW (CEQR)**



**OFFSHORE WIND DEVELOPMENT SERVICES**



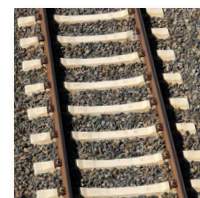
**PATHOGEN REMEDIATION SERVICES**



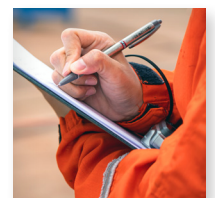
**PLANNING FOR LAND DEVELOPMENT**



**PROGRAM MANAGEMENT**



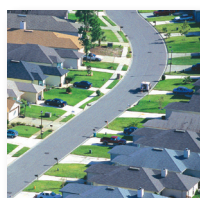
**RAIL & TRANSIT INFRASTRUCTURE**



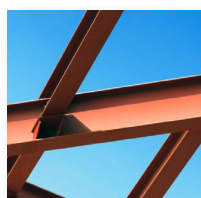
**REGULATORY COMPLIANCE MONITORING**



**REMEDIATION PROGRAM**



**SITE/CIVIL ENGINEERING**



**STRUCTURAL ENGINEERING**



**WATER SYSTEM ENGINEERING**



**WELL DESIGN CONSTRUCTION & TESTING**



**WELL DEVELOPMENT & TESTING**



# MATRIX **NEW** WORLD

Engineering Progress

## A COMPANY OF ENGINEERS

**Solving national & global challenges in water, energy, climate change, transportation & infrastructure requires engineering & scientific ingenuity. That's Matrix.**

- Three decade history of success and continued growth in the United States
- 230+ professionals – engineering, scientists and construction professionals with world class expertise
- Headquartered in New York City (NYC) tri-state area with operations in the U.S. southwest and U.S. Gulf Coast
- Track record on some of the most significant projects in U.S., relating to infrastructure and disaster response
- Leader in climate change resiliency projects in New York (NY) and New Jersey (NJ)
- Leader in disaster response services including multi-disciplinary damage assessments

Matrix New World Engineering is a company of engineering and science experts who focus on some of the nation's most pressing long-term challenges, including climate change, water supply, disaster response and urban revitalization. Applying our expertise to areas where these challenges are becoming particularly acute, Matrix intends to further focus our offerings and expertise on these and other emerging National Strategic Issues, where solving environmental challenges through careful planning and engineering is becoming an indispensable measure of success.

Matrix is rapidly expanding with offices in New York, New Jersey, Connecticut, Arizona, Louisiana, and project experience throughout the U.S. and the Caribbean.

### Awards & Commendations

- "ENR TOP 200 Environmental Firms for 2023"
- "ENR TOP 200 Environmental Firms for 2022"
- "ENR TOP 200 Environmental Firms for 2021"
- "Commerce: The Business of NJ (CIANJ) Honors – Cleaning up Contaminated Sites" (2021)
- "Commerce: The Business of NJ (CIANJ) Honors – Ecological Site Restoration" (2021); Commerce & Industry Association of New Jersey
- "Salute to Women in Construction Award" Jayne Warne, PE, President (2021)
- "Silver Stevie Award, Female Entrepreneur of the Year – Business Services" Jayne Warne, PE, President (2018)
- "Gold Stevie Award, Women of the Year in Technology" Laurie LaPat-Polasko, V.P. (2018)
- "Outstanding Women Owned Business for 2012" by Anchin, Block & Anchin LLP
- Ernst and Young "Entrepreneur of the Year" Finalist Dennis Petrocelli, PG (2011)
- "Business of the Year" for 2010, for the 51–100 Employees Category
- "One of New Jersey's Finest Companies," NJBIZ (2004)

### Contact

#### **Matrix New World Engineering**

26 Columbia Turnpike, 2nd Floor  
Florham Park, NJ 07932

Jayne Warne, PE, President  
jwarne@mnwe.com, or  
Dennis Petrocelli, PG, Senior Vice President  
dpetrocelli@mnwe.com

973.240.1800  
800.747.6287 (MATRIX)  
MNWE.com