

MATRIX NEW WORLD ENGINEERING

MNWE.COM | 800.747.6287

NEW JERSEY NEW YORK CONNECTICUT

LOUISIANA ARIZONA

MATRIX**NEW**WORLD

Engineering Progress

Services



FEDERAL PROGRAMS
& CONTRACTS



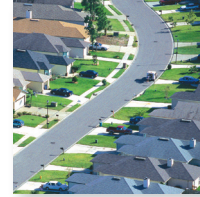
ENVIRONMENTAL
REMEDIATION



GEOTECHNICAL
ENGINEERING



ECOLOGY
NATURAL RESOURCES



SITE/CIVIL
ENGINEERING



LAND SURVEYING
& HD LASER SCANNING



RAIL & TRANSIT
INFRASTRUCTURE



REMEDIATION
PROGRAM



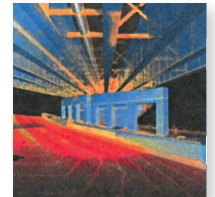
MARINE & WATERFRONT
ENGINEERING



DISASTER
RESPONSE



AIR QUALITY SERVICES
MONITORING & SUPPORT



BIM & 3D MODELING
SOLUTIONS



NYC ENVIRONMENTAL
REVIEW (CEQR)



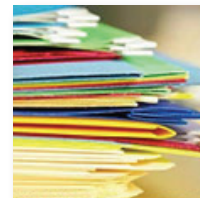
INDUSTRIAL
HYGIENE



PLANNING
FOR LAND DEVELOPMENT



LANDSCAPE
ARCHITECTURE



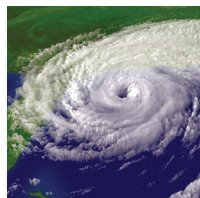
LSRP
CONSULTING



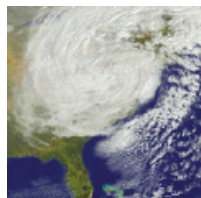
GIS - GEOGRAPHICAL
INFORMATION SYSTEMS



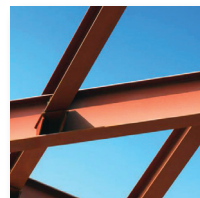
OFFSHORE WIND
DEVELOPMENT SERVICES



COASTAL RESILIENCY
ENGINEERING



FLOOD HAZARD
GRANT PROGRAM



STRUCTURAL
ENGINEERING



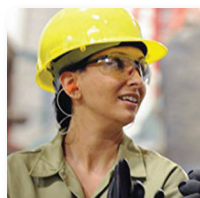
LEAD & ASBESTOS
REMEDIATION



OYSTER
SURVEYS



PATHOGEN
REMEDIATION SERVICES



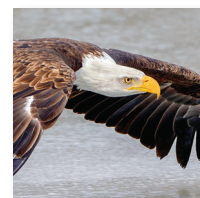
ENVIRONMENTAL
HEALTH & SAFETY (EHS)



AFFORDABLE HOUSING
DESIGN



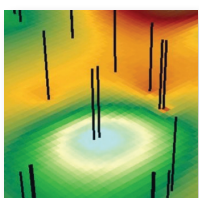
HABITAT
MITIGATION



NEPA & STATE
EQUIVALENT ASSESSMENTS



WATER SYSTEM
ENGINEERING



3D COMPUTER
MODELING



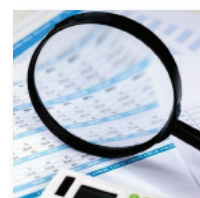
WELL DESIGN
CONSTRUCTION & TESTING



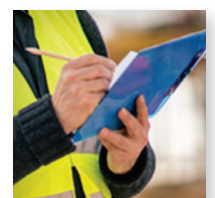
ENVIRONMENTAL SITE
ASSESSMENT (ESA)



WELL DEVELOPMENT
& TESTING



DUE DILIGENCE &
REGULATORY PERMITTING



REGULATORY COMPLIANCE
MONITORING



MATRIX**NEW**WORLD

Engineering Progress

A COMPANY OF ENGINEERS

Solving national & global challenges in water, energy, climate change, transportation & infrastructure requires engineering & scientific ingenuity. That's Matrix.

- Three decade history of success and continued growth in the United States
- 220+ professionals – engineering, scientists and construction professionals with world class expertise
- Headquartered in New York City (NYC) tri-state area with operations in the U.S. southwest and U.S. Gulf Coast
- Track record on some of the most significant projects in U.S., relating to infrastructure and disaster response
- Leader in climate change resiliency projects in New York (NY) and New Jersey (NJ)
- Leader in disaster response services including multi-disciplinary damage assessments

Matrix New World Engineering is a company of engineering and science experts who focus on some of the nation's most pressing long-term challenges, including climate change, water supply, disaster response and urban revitalization. Applying our expertise to areas where these challenges are becoming particularly acute, Matrix intends to further focus our offerings and expertise on these and other emerging National Strategic Issues, where solving environmental challenges through careful planning and engineering is becoming an indispensable measure of success.

Matrix is rapidly expanding with offices in New York, New Jersey, Connecticut, Arizona, Louisiana, and project experience throughout the U.S. and the Caribbean.

Awards & Commendations

- "ENR TOP 200 Environmental Firms for 2021"
- "Commerce: The Business of NJ (CIANJ) Honors – Cleaning up Contaminated Sites" (2021)
- "Commerce: The Business of NJ (CIANJ) Honors – Ecological Site Restoration" (2021); Commerce & Industry Association of New Jersey
- "Salute to Women in Construction Award" Jayne Warne, PE, President (2021)
- "Silver Stevie Award, Female Entrepreneur of the Year – Business Services" Jayne Warne, PE, President (2018)
- "Gold Stevie Award, Women of the Year in Technology" Laurie LaPat-Polasko, V.P. (2018)
- "Outstanding Women Owned Business for 2012" by Anchin, Block & Anchin LLP
- Ernst and Young "Entrepreneur of the Year" Finalist Dennis Petrocelli, PG (2011)
- "Business of the Year" for 2010, for the 51-100 Employees Category
- One of "Top 50 Women-Owned Businesses" in diversitybusiness.com (2005)
- "One of New Jersey's Finest Companies," NJBIZ (2004)

Contact

Matrix New World Engineering

26 Columbia Turnpike, 2nd Floor
Florham Park, NJ 07932

Jayne Warne, PE, President
jwarne@mnwe.com,

or

Dennis Petrocelli, PG, Senior Vice President
dpetrocelli@mnwe.com

973.240.1800
800.747.6287 (MATRIX)
MNWE.com