

ENR THE TOP 500

Overview p. 46 // Profitability p. 46 // Top 500 Volume p. 46 // Backlog p. 46 // Markets' Share of Total Revenue p. 47
Revenue by Owner Type p. 47 // Domestic and International Staff Hiring p. 47 // International Market Analysis p. 48
Past Decade's Design Revenue p. 48 // Harry W. Nice Bridge Replacement p. 49 // Top 500 Dialogue pp. 50, 59
Top 20 Design Firms by Sector pp. 52-56 // East Midtown Greenway p. 60 // Top 50 Designers in International Markets p. 60
Top 100 Pure Designers p. 63 // Miami Signature Bridge Pour p. 64 // DEI in Design p. 66 // How To Read the Tables p. 66
Top 500 Design Firms List pp. 68-77 // Where To Find the Top 500 p. 78-79

NUMBER 107

ELEVATE

Populous, along with Stantec and S2 Architecture, designed the \$500-million expansion of Calgary's BMO Centre.



RENDERING COURTESY OF POPULOUS

Top Firms Invest to Do More

As federal spending drives project plans, firms draw owners a roadmap in a tricky market By Emell Adolphus and Jonathan Keller



Money from the \$1.2-trillion Infrastructure Investment and Jobs Act has yet to reach most state agencies, but design firms report being busy with value engineering projects up to the shovel-ready phase. Owners appear revved up and ready to take advantage of federal funding, needing design firms more than ever to keep projects from getting stalled in a market plagued by shortages.

Overwhelmingly, the Top 500 Design Firms say staffing is their No. 1 priority going into the COVID-19 pandemic's third year, but revenue numbers show that firms are learning to do more with fewer hands on deck—at least for now. For the sixth consecutive year, total revenue for the Top 500 listed firms increased—rising 2.2% to \$107.11 billion in 2021. Median firm revenue has also rebounded after a dip last year, rising 3.8%, to \$67.45 million.

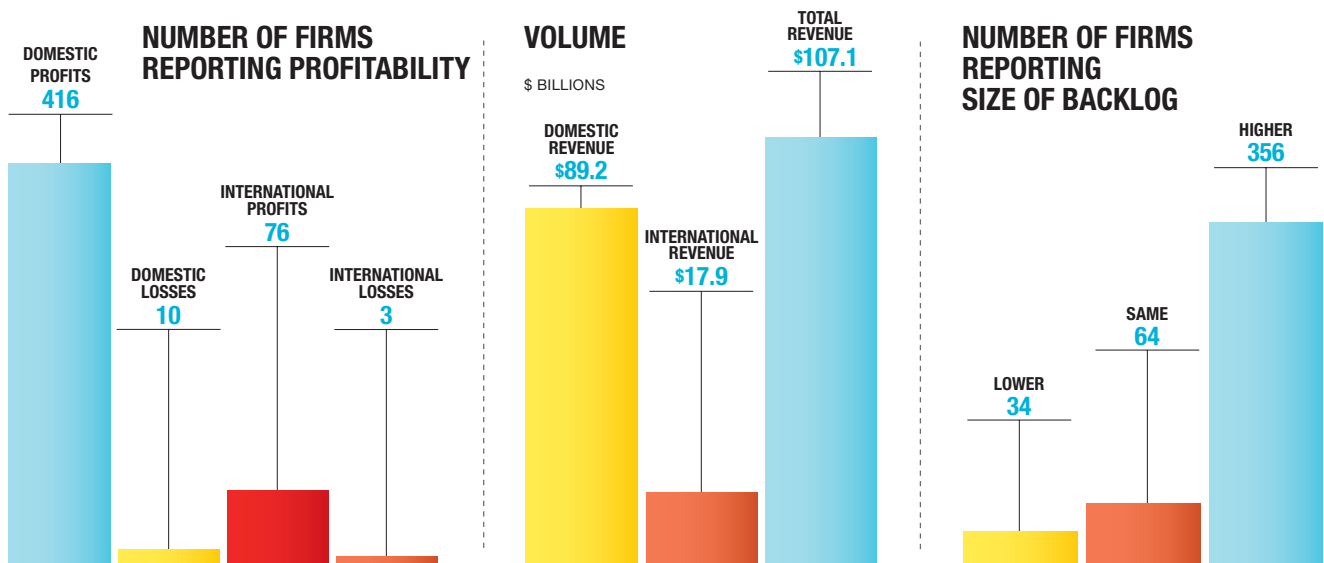
Keeping revenue in the Top 25 strong are big firms that win big projects requiring increased capacity to meet speed-to-market demands, such as building man-

ufacturing facilities for semiconductors and electric vehicle batteries.

For Kimley-Horn, which rose to No. 10 from No. 15 last year, one of the company's "fastest-growing markets focuses on the rapid transition to zero-emissions vehicles," says Jenna McDavid, its electric vehicles practice director. Funding from the IIJA is already having a significant influence on the company's scope of programs with local and state agencies.

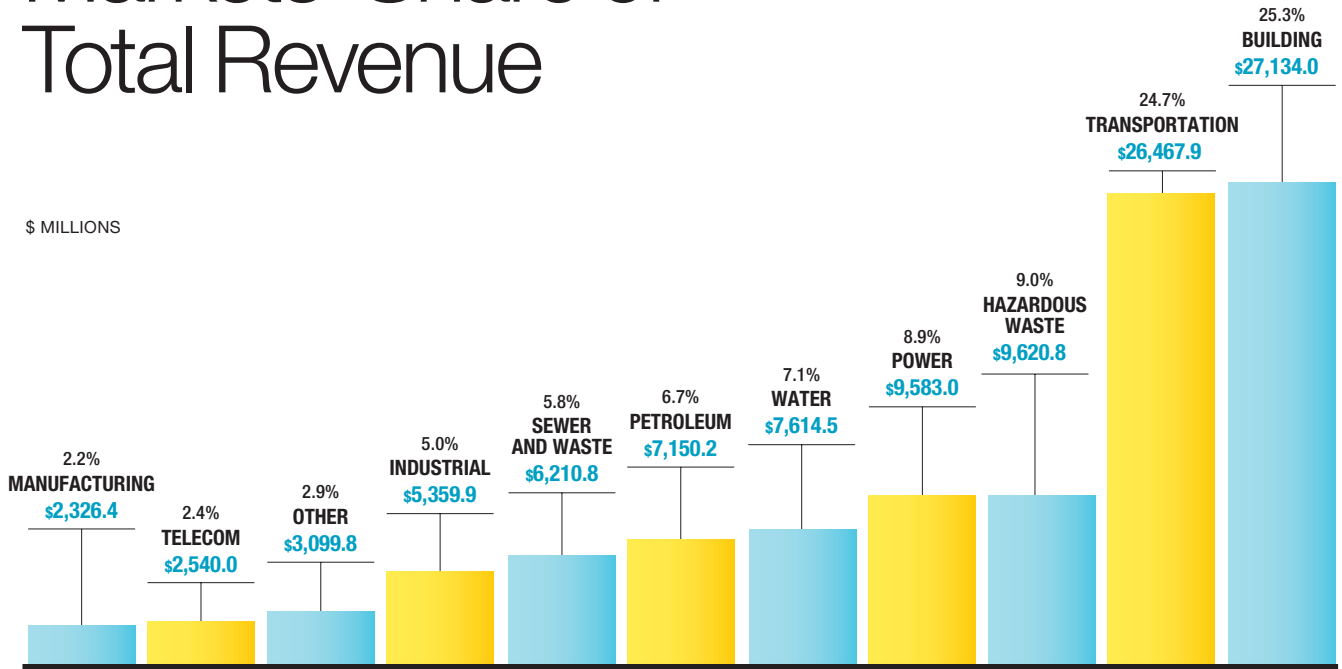
Mid-tier firms ranked from No. 50 to No. 100 also seem to be prepping to grab their share of federally funded projects. Revenue numbers show that they

2021-22 at a Glance



Markets' Share of Total Revenue

\$ MILLIONS



increased their profit margins last year, and gross revenue rose 11.1%, on average.

Faced with rising inflation costs, firms are finding that they need greater capacity to meet demands for compressed delivery of design packages and construction schedules to avoid potential cost increases.

“The name of the game is building a strong AEC team committed to serving clients to help them meet their goals,” says Kevin McNutt, director of engineering at BSA LifeStructures. A team must be “open and flexible to the unexpected along the way,” he adds.

How firms go about creating these teams seems to be as diverse as the firms themselves.

Data-Driven Decisions

As part of scaling up the breadth of its design services, Jacobs says the company is thinking far “beyond traditional scope, schedule and budget” to meet demands of the market and changing client needs. The firm has held the No. 1 position on the Top 500 list since 2018.

On March 3, Jacobs announced the creation of a new data solutions accelerator that will integrate cloud,

465

Top 500 firms sent in surveys last year.

70.1%

of firms report revenue rose between 2020 and 2021.

\$39.6

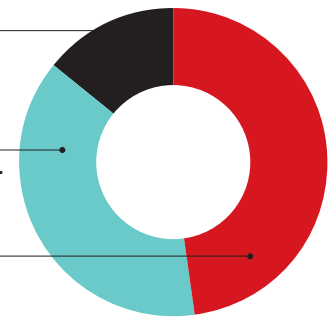
million: median revenue among architecture firms.

PERCENT SHARE OF TOTAL REVENUE BY OWNER TYPE

FEDERAL
14.1%

STATE/LOCAL
37.9%

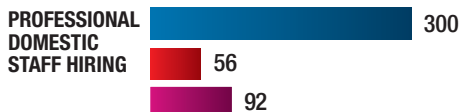
PRIVATE
48%



cyber and data-management technologies for clients across all of its design markets.

“This move recognizes the significant progress we’ve made,” says Steve Arnette, president of its Critical Mission Solutions unit.

“More than that,” Arnette adds, “it acknowledges the importance of embracing disruption and innova-

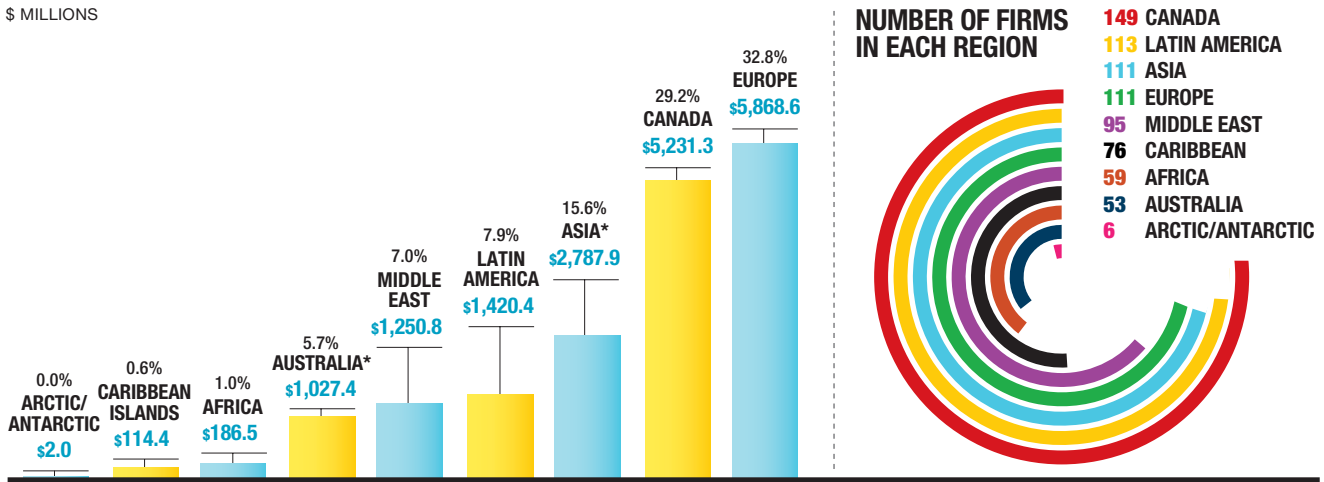


(MEASURED IN FIRMS REPORTING)

SOURCE: ENR

International Market Analysis

\$ MILLIONS



tion to drive solutions horizontally across the company and create value for our clients.”

For Burns & McDonnell, moving company operations to cloud-based platforms has allowed for better resilience, availability, cost management and security, says chairman and CEO Ray Kowalik. “Our clients continue to move toward more integrated delivery

tech to develop data centers around the world,” he says. “Our data center, architecture, engineering and construction teams have grown significantly to meet these needs.”

To help the firm better calculate operational and financial risks long before shovels hit the dirt, Kiewit Corp. has also rolled out major investments in data technology, says vice president and operations controller Dave Freeman.

“We’ve placed greater emphasis on capturing the right data to drive better analysis and operational improvements,” he says.

In addition to changes to the company’s overall data management processes and structure, Kiewit has added data stewards for “monitoring data use to ensure accountability,” Freeman points out.

“There is a positive shift in the company to ensure data of all types is treated as a core, crucial asset to better estimate our work at the right price, build work at the lowest cost, and manage our people and assets,” Freeman adds.



“There is a positive shift in the company to ensure data of all types is treated as a core, crucial asset.”

Dave Freeman, VP, operations controller, Kiewit

models,” he says. “They are increasingly wanting one entity to handle their project safely, on schedule and on budget,” Kowalik says, which makes protection of client data even more paramount.

“Cloud computing has been an area of explosive growth, and we are working with the biggest names in

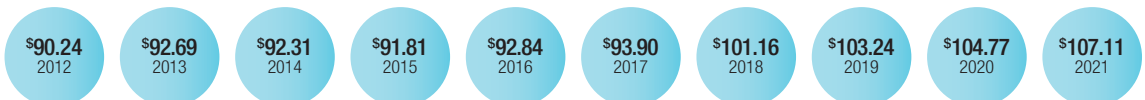
Putting Technology to Work

In the last several years, Hargrove Engineers + Constructors has made what it says are significant investments in its in-house laser-scanning team, with numer-

COMPARING THE PAST DECADE’S DESIGN REVENUE

\$ BILLIONS

SOURCE: ENR



ous technologies, including drones, laser scanners, ground-penetrating radar and electromagnetic detection systems. Team members receive Federal Aviation Authority certification to operate drones.

“This equipment can maximize the data collected and minimize the number of trips to client facilities,” says President and CEO Ralph A. Hargrove. “This team is also able to incorporate [virtual reality] elements to our client-facing materials in the design phases of a project, making communication clearer and more precise.”

Additionally, Hargrove finds more clients are expecting digital-twin technology and process modeling packaged as value-added services. “Examples of services offered include equipment analysis and trouble-

shooting, optimizing real-time process controls, and predictive maintenance,” says Hargrove. “Expected client benefits include increased throughput and quality, lower operating costs and increased equipment uptime.”

Barr Engineering says the company is continually learning by experimenting with technology applications, including integrating 3D scan data with simulation and augmented reality. The firm recently acquired an augmented reality platform that allows it to view and interact with GIS and 3D designs overlaid on real-world data and imagery.

“We’ve been piloting the platform for the past few months and will be using it for an upcoming client project,” says Ward Swanson, president and CEO.

Mist on the Water | By Jonathan Keller



KCI Technologies (**No. 48**) is providing construction management and inspection services on the replacement of the Governor Harry W. Nice Memorial/Senator Thomas ‘Mac’ Middleton Bridge over the Potomac River between Maryland and Virginia. Built north of the existing bridge, the new structure will double available lanes from two to four, and enable tall ships to pass beneath. Upon completion of the new bridge, the existing structure will be demolished and materials will be used to create an artificial fish reef in the Chesapeake Bay watershed.

The Top 500 Dialogue

Where has your firm seen the most success retaining qualified staff amid labor shortages?

#268
on the
Top 500 List



JENNA KNUDSEN, MANAGING PRINCIPAL
CO ARCHITECTS
Los Angeles

We encourage staff to propose initiatives in support of continual improvement. Going back 12 years, a group of women started a Women of CO employee group to provide mentorship and professional advancement among our female staff. We're more than 50% female.

#32
on the
Top 500 List



RANDY GRASS, CHIEF STRATEGY OFFICER
POWER ENGINEERS
Hailey, Idaho

When you are reasonably satisfied with your retention numbers, this is the time to double down. Don't get complacent. Talk to your current employees, do a company-wide survey, find out what is important and work on it.

How do you anticipate funding from the Infrastructure Investment and Jobs Act will change your work?

#10
on the
Top 500 List



DAVID WHYTE, MARKETING MANAGER
KIMLEY-HORN
Raleigh, N.C.

We are seeing a definitive uptick in business with localities and regional and state agencies, all of which are exhibiting confidence in their infrastructure programs and asking for increasing assistance in delivering them.

#261
on the
Top 500 List



KUMAR BUVANENDARAN, PRESIDENT/CEO
PRIME AE GROUP INC.
Baltimore

Because of how inclusive it is, once funding starts, it will be imperative that we are staffed appropriately to meet the needs of our clients. We foresee a bit of a juggling act—achieving parity where tactical utilization offsets anticipatory preparation.

The Top 20 Design Firms by Sector

1 TRANSPORTATION			2 GENERAL BUILDING			3 INDUSTRIAL PROCESS/PETROLEUM		
Top 20 Revenue: \$15.9 Billion Top 20 Market Share: 60.1%			Top 20 Revenue: \$10.2 Billion Top 20 Market Share: 37.5%			Top 20 Revenue: \$9.8 Billion Top 20 Market Share: 78.1%		
RANK	2022	2021	RANK	2022	2021	RANK	2022	2021
1	1	AECOM	1	1	AECOM	1	1	FLUOR
2	2	JACOBS	2	2	GENSLER	2	3	WOOD
3	3	HNTB COS.	3	3	JACOBS	3	4	JACOBS
4	4	WSP USA	4	5	KIMLEY-HORN	4	2	WORLEY
5	6	HDR	5	4	PERKINS&WILL	5	**	INTERTEK-PSI
6	5	PARSONS CORP.	6	7	HDR	6	5	BECHTEL
7	8	KIMLEY-HORN	7	6	STANTEC INC.	7	6	KIEWIT CORP.
8	11	T.Y. LIN INTERNATIONAL	8	8	HKS	8	8	BURNS & MCDONNELL
9	7	STANTEC INC.	9	9	HOK	9	7	S&B ENGINEERS AND CONSTRUCTORS LTD.
10	10	STV GROUP INC.	10	10	TERRACON CONSULTANTS INC.	10	9	HARGROVE ENGINEERS + CONSTRUCTORS
11	9	SNC-LAVALIN INC.	11	12	WSP USA	11	12	CRB
12	14	GANNETT FLEMING	12	15	CANNONDESIGN	12	14	IPS-INTEGRATED PROJECT SERVICES LLC
13	12	MICHAEL BAKER INTERNATIONAL	13	18	TETRA TECH INC.	13	**	FOTH
14	13	MOTT MACDONALD	14	17	SMITHGROUP	14	**	BARRY-WEHMILLER DESIGN GROUP
15	16	JOHNSON MIRMIRAN & THOMPSON INC. (JMT)	15	**	UNIVERSAL ENGINEERING SCIENCES	15	19	STANTEC INC.
16	17	RS&H INC.	16	19	IBI GROUP INC.	16	18	TRC COS. INC.
17	18	EXP	17	11	SKIDMORE OWINGS & MERRILL	17	**	DENNIS GROUP
18	**	TRANSYSTEMS	18	16	PERKINS EASTMAN	18	**	KLEINFELDER
19	**	MOFFATT & NICHOL	19	**	ARCADIS NORTH AMERICA/CALLISON RTKL	19	**	AECOM
20	**	KIEWIT CORP.	20	13	DLR GROUP	20	**	THE YATES COS. INC.

In the areas of AI and data science, the firm is developing what it refers to as a “Data Science Pipeline” to streamline its ability to perform advanced analysis on project data.

“We’ve seen a large increase in the size of data we are collecting, recently moving from billions of



“We understand that our work has lasting impacts on people's lives, so the center ensures every WSP project integrates equity.”

Lou Cornell, CEO, WSP

records to a project requiring us to collect over a trillion records during the lifetime of the project,” says Swanson, explaining that he foresees projects evolving to “require a deeper understanding of what normally occurs through typical data analysis and visualization.”

Adding DEI to Design Services

As much as COVID-19 has put a focus on digital innovation, firms are also finding themselves having deeper discussions with clients about long-term design packages that help cut carbon emissions, execute ESG goals and meet diversity, equity and inclusion (DEI) markers for stakeholders.

Steinberg Hart President and CEO David Hart says the firm’s focus on DEI has been its biggest success.

“I think it’s the path to even greater successes for our firm in the future,” says Hart. “We’re having real conversations with our clients and actively pursuing ways to improve processes and outcomes on our projects. It’s a long-term plan.

“This has always been something we strived for, but the pandemic really pushed us to the next level,” he adds.

Recognizing how infrastructure spending could transform communities and leave others behind, WSP USA recently formed the Equity Center of Excellence to “drive the transformation of infrastructure to full and equitable access for underserved, marginalized and disinvested communities,” says CEO Lou Cornell.

Equity has become a measure of progress tied to many infrastructure developments as a vital lifeline for communities, he notes.

The Top 20 Design Firms by Sector

4		HAZARDOUS WASTE		5		POWER		6		WATER	
RANK		Top 20 Revenue: \$8.7 Billion Top 20 Market Share: 90.5%		RANK		Top 20 Revenue: \$6.8 Billion Top 20 Market Share: 70.5%		RANK		Top 20 Revenue: \$5.6 Billion Top 20 Market Share: 73.9%	
2022	2021			2022	2021			2022	2021		
1	1	JACOBS		1	1	BURNS & MCDONNELL		1	1	TETRA TECH INC.	
2	2	AECOM		2	2	BLACK & VEATCH		2	3	JACOBS	
3	6	FLUOR		3	3	POWER ENGINEERS INC.		3	2	AECOM	
4	3	ARCADIS NORTH AMERICA/CALLISON RTKL		4	7	JACOBS		4	4	CDM SMITH	
5	4	TETRA TECH INC.		5	4	SARGENT & LUNDY		5	5	HDR	
6	5	LEIDOS		6	5	TRC COS. INC.		6	6	STANTEC INC.	
7	8	BECHTEL		7	6	KIEWIT CORP.		7	8	ARCADIS NORTH AMERICA/CALLISON RTKL	
8	7	TRC COS. INC.		8	8	AECOM		8	7	BLACK & VEATCH	
9	9	WOOD		9	10	WSP USA		9	9	CAROLLO ENGINEERS INC.	
10	10	GHD INC.		10	9	LEIDOS		10	14	HAZEN AND SAWYER	
11	11	GEOSYNTEC CONSULTANTS		11	11	TETRA TECH INC.		11	12	GHD INC.	
12	**	RAMBOLL		12	13	NV5 GLOBAL INC.		12	10	MICHAEL BAKER INTERNATIONAL	
13	12	PARSONS CORP.		13	**	EN ENGINEERING LLC		13	13	GANNETT FLEMING	
14	13	SNC-LAVALIN INC.		14	12	HDR		14	11	BROWN AND CALDWELL	
15	15	WSP USA		15	14	WOOD		15	15	WOOD	
16	14	TERRACON CONSULTANTS INC.		16	17	STANTEC INC.		16	17	MOTT MACDONALD	
17	18	BURNS & MCDONNELL		17	15	ENERCON		17	18	NV5 GLOBAL INC.	
18	17	CDM SMITH		18	**	FUGRO USA		18	16	FREESE AND NICHOLS INC.	
19	16	LANGAN		19	20	ULTEIG ENGINEERS INC.		19	**	BURNS & MCDONNELL	
20	19	HALEY & ALDRICH INC.		20	**	MESA ASSOCIATES INC.		20	19	DEWBERRY	

“We understand that our work has lasting impacts on people’s lives, so the center ensures that every WSP project integrates equity into its processes, from planning to resourcing to implementation and use,” Cornell explains.

Clients measuring a design firm’s culture, values and DEI programs against their own quickly are becoming the norm, says Greg Hurd, president and CEO of BKF Engineers.

“When selecting consultants, owners are seemingly more interested in working with firms that amplify diversity and align with their own cultures and values, rather than the portfolio of our services,” says

Hurd. “While services and experience are a key aspect of selecting BKF, we are seeing more owners interested in our culture and how we incorporate DEI into our design philosophy.”

Design firms that are engineering diversity, equity and inclusion philosophy into projects is another way they can add more to their scope of services with minimal risk, says Huckabee CEO Christopher M. Huckabee.

“For many clients, we are developing COVID-19 market impact statements that are tailored to their community and based on research and our experience,” says Huckabee.

In the education market, Huckabee helps clients communicate with stakeholders on project impacts. It’s an opportunity for the firm to provide wrap-around services, such as communication strategy, but also serve as a voice in the industry, says Huckabee.

More than a project consultant, clients are looking for a partner that will help them navigate the fluctuating construction market, he says.

“Huckabee works with our educational partners to develop strategies that involve prototype design, early design packages pre-bond, shorter duration in between bonds and different construction delivery methods,” says Huckabee.



“We are seeing more owners interested in our culture and how we incorporate DEI into our design philosophy.”

Greg Hurd, President and CEO, BKF Engineers

The Top 20 Design Firms by Sector

7 SEWER AND WASTE			8 TELECOMMUNICATIONS			9 MANUFACTURING		
Top 20 Revenue: \$4.1 Billion Top 20 Market Share: 66.0%			Top 20 Revenue: \$1.9 Billion Top 20 Market Share: 76.5%			Top 20 Revenue: \$1.7 Billion Top 20 Market Share: 74.4%		
RANK	2022	2021	RANK	2022	2021	RANK	2022	2021
1	1	1	1	1	1	1	1	1
2	2	2	2	4	4	2	2	2
3	3	3	3	3	3	3	**	INTERTEK-PSI
4	4	4	4	5	5	4	3	GHAFARI ASSOCIATES LLC
5	10	10	5	6	6	5	4	SSOE GROUP
6	5	5	6	2	2	6	**	MERRICK & CO.
7	6	6	7	7	7	7	7	WARE MALCOMB
8	7	7	8	15	15	8	10	LEIDOS
9	9	9	9	16	16	9	6	BURNS & MCDONNELL
10	11	11	10	10	10	10	5	EXYTE AMERICAS HOLDING INC.
11	8	8	11	12	12	11	**	WUNDERLICH-MALEC ENGINEERING INC.
12	12	12	12	13	13	12	**	TAI ENGINEERING
13	13	13	13	8	8	13	**	WSP USA
14	14	14	14	14	14	14	14	SNC-LAVALIN INC.
15	15	15	15	**	**	15	15	MATRIX TECHNOLOGIES INC.
16	17	17	16	17	17	16	**	RAMBOLL
17	20	20	17	**	**	17	9	CHA CONSULTING INC. (CHA)
18	**	**	18	20	20	18	11	RS&H INC.
19	19	19	19	**	**	19	**	GRESHAM SMITH
20	16	16	20	18	18	20	**	GZA



“For many clients, we are developing COVID-19 market impact statements that are tailored to their community.”

Christopher M. Huckabee, CEO, Huckabee

Design firms are facing two distinct challenges in staffing needs and managing pressures of construction costs. “Very different items, but also very intertwined,” he says. How design firms holistically find solutions for both will play a big role in whether infrastructure act spending strengthens the economy.

Private Equity Pushes Performance

Firms did not just see a rise in gross revenue this year. Out of 426 firms that reported domestic profitability, 97.6% saw a profit, a slight increase from 2020. The average profit margin was 14.2%, up significantly from last year’s 10.5%. Additionally, 29.2% of firms

reported a lower backlog compared to last year’s 2021 Top 500 survey. That percentage dropped to 7.5% on this year’s survey.

After recovering somewhat last year, revenue numbers for the petroleum design market plummeted 27.6% in 2021, down to \$7.15 billion. The market is at its lowest level since the 2004 Top 500 list.

The largest riser is the industrial process market, up 32.5% to \$5.36 billion. That is the highest total revenue the market has seen since 2013.

Longer term, the share of Top 500 revenue owned by the leading 10 firms has decreased significantly in the past decade. The top 10 accounted for 43.3% of total 2012 Top 500 revenue. That number dropped to 35.5% on this year’s list. Medium-sized firms have been the particular beneficiaries of this change. Firms ranked between Nos. 126 and 250 have increased their share of revenue to 11.5% this year from 8.3% in 2012. Firms ranked from Nos. 251 to 375 have risen from 4.7% to 6.2% of the total. This trend has already been spotted by industry observers.

Studies done by Morrissey Goodale, a Natick, Mass.-based management consultant and M&A adviser, point to the influx of private equity into the

The Top 500 Dialogue

What markets are proving to be the hottest for your firm? Any plans to delve into new markets?

#398
on the
Top 500 List



KRAIG C. KERN, VICE PRESIDENT
WK DICKSON
Charlotte, N.C.

We have ventured into the energy market, specifically natural gas, because all of this rapid development needs new utilities and relocations, including gas. This has been very lucrative for us, and we have seen 25% revenue gains year after year for the last five years.

#338
on the
Top 500 List



ABUL ISLAM, PRESIDENT/CEO
AI ENGINEERS
Middletown, Conn.

Conventional transportation, bridge, transit, civil and facilities with storage capacity and residential work are proving to be hot markets due to an influx of consumer and infrastructure spending. We are expanding our portfolio to include private sector work to supplement our public infrastructure work.

In what ways would you say your firm has evolved the most over the past year?

#383
on the
Top 500 List



SHANE JEFFERIES, DIRECTOR OF IT
MILHOUSE
Chicago

To accelerate our organization's digital transformation over the last two years, we have focused on collecting pertinent data to drive business decisions, proactively automate strategy and better position the organization to increase positive business outcomes.

#130
on the
Top 500 List



PATRICK SHEEHAN, PRESIDENT/CEO
GZA
Norwood, Mass.

Besides accelerating our ability to truly work anywhere, we feel increased cross-company communications during the pandemic have only improved our ability to connect efficiently and effectively with each other and our clients.

industry as a prime mover. According to the firm's data, the median revenue of private equity-backed firms in the top 100 of ENR's Top 500 list grew 31% between 2017 and 2020. Publicly traded firms grew 8%.

"If you look at the [2021] ENR Top 10, it's predominantly populated by 'old line' larger publicly traded firms," says Mick Morrissey, managing principal at Morrissey Goodale, noting that eight of the top 10 were publicly traded firms. There are no private equity-backed firms in the top 10.

Much of that private equity-backed growth is built through acquisition. Purchase deals backed by private equity firms increased to 35% of the total number of U.S. deals last year, from 10% in 2013, according to Morrissey Goodale data.

In contrast, the share of acquisitions made by public firms has been dropping steadily. These accounted for 25% of all acquisitions in 2007 but are down to just 6% year-to-date in 2022. Morrissey sees a market where it is increasingly difficult for publicly traded firms to outbid their private equity rivals. "In some cases PE firms have as much capital available to deploy as these big public firms," he says.

Ardurra fits that profile, making 20 acqui-

Caissons | By Jonathan Keller



Tectonic Engineering Consultants, Geologists and Land Surveyors (**No. 186**) is providing inspection services on Manhattan's East Midtown Greenway project. It involves construction of a series of walkways and small parks, projecting out into the East River south of the Queensboro Bridge, on caisson-supported platforms. Construction is expected to be complete by 2023.

The Top 50 Designers in International Markets

RANK 2022	RANK 2021	FIRM
1	1	AECOM
2	3	JACOBS
3	2	FLUOR
4	4	TETRA TECH INC.
5	6	WOOD
6	9	EXP
7	13	HDR
8	8	INTERTEK-PSI
9	10	PARSONS CORP.
10	15	IBI GROUP INC.
11	12	BECHTEL
12	14	T.Y. LIN INTERNATIONAL
13	16	GHD INC.
14	11	BLACK & VEATCH
15	17	GENSLER
16	7	WORLEY
17	32	ARCADIS NORTH AMERICA/CALLISON RTKL

RANK 2022	RANK 2021	FIRM
18	19	CDM SMITH
19	18	KOHN PEDERSEN FOX ASSOCIATES PC
20	24	PERKINS&WILL
21	22	MOTT MACDONALD
22	20	SKIDMORE OWINGS & MERRILL
23	36	BURNS & MCDONNELL
24	34	KIEWIT CORP.
25	23	MORRISON HERSHFIELD
26	25	HOK
27	**	JENSEN HUGHES
28	27	ARUP
29	**	BEAM LONGEST & NEFF
30	28	NORR
31	35	SARGENT & LUNDY
32	29	PERKINS EASTMAN
33	30	POPULOUS
34	38	THORNTON TOMASETTI

RANK 2022	RANK 2021	FIRM
35	33	PAGE
36	37	GEOSYNTEC CONSULTANTS
37	26	INTEGRAL GROUP
38	41	IPS-INTEGRATED PROJECT SERVICES LLC
39	39	WATG
40	**	WOOLPERT INC.
41	43	WSP USA
42	40	HKS
43	42	STANLEY CONSULTANTS
44	**	CRB
45	46	GANNETT FLEMING
46	**	WALDEMAR S. NELSON AND CO. INC.
47	44	POWER ENGINEERS INC.
48	50	NV5 GLOBAL INC.
49	**	FUGRO USA
50	47	COWI NORTH AMERICA

The Top 100 Pure Designers

RANK	FIRM	FIRM TYPE
1	JACOBS	EAC
2	TETRA TECH INC.	E
3	HDR	EA
4	WSP USA	E
5	STANTEC INC.	EA
6	KIMLEY-HORN	O
7	HNTB COS.	EA
8	GENSLER	A
9	ARCADIS NORTH AMERICA/CALLISON RTKL	EA
10	TRC COS. INC.	E
11	LEIDOS	E
12	TERRACON CONSULTANTS INC.	E
13	INTERTEK-PSI	EC
14	NV5 GLOBAL INC.	E
15	EXP	EA
16	GHD INC.	O
17	MICHAEL BAKER INTERNATIONAL	EA
18	GANNETT FLEMING	EA
19	MOTT MACDONALD	E
20	T.Y. LIN INTERNATIONAL	EA
21	POWER ENGINEERS INC.	E
22	PERKINS&WILL	A
23	SARGENT & LUNDY	E
24	STV GROUP INC.	EA
25	DEWBERRY	EA
26	BROWN AND CALDWELL	E
27	ARUP	E
28	IBI GROUP INC.	AE
29	GEOSYNTEC CONSULTANTS	E
30	HOK	AE
31	UNIVERSAL ENGINEERING SCIENCES	GE
32	HKS	A
33	KLEINFELDER	EA
34	LANGAN	E
35	KCI TECHNOLOGIES INC.	EC

RANK	FIRM	FIRM TYPE
36	RS&H INC.	EA
37	WILLDAN	E
38	WOOLPERT INC.	O
39	SKIDMORE OWINGS & MERRILL	AE
40	CANNONDESIGN	AE
41	HAZEN AND SAWYER	E
42	LJA ENGINEERING	E
43	CAROLLO ENGINEERS INC.	E
44	EN ENGINEERING LLC	E
45	JOHNSON MIRMIRAN & THOMPSON INC. (JMT)	EA
46	CHA CONSULTING INC. (CHA)	EA
47	VHB	E
48	SMITHGROUP	AE
49	ENGINEERING CONSULTING SERVICES (ECS)	E
50	THORNTON TOMASETTI	EA
51	FUGRO USA	GE
52	FOTH	E
53	PERKINS EASTMAN	A
54	GREENMAN-PEDERSEN INC. (GPI)	E
55	IMEG CORP.	E
56	DLR GROUP	AE
57	RK&K	E
58	OLSSON INC.	E
59	WOODARD & CURRAN	E
60	CONSOR ENGINEERS	E
61	TRANSYSTEMS	E
62	SALAS O'BRIEN	EA
63	CARDNO INC.	E
64	JENSEN HUGHES	E
65	ATWELL LLC	E
66	MOFFATT & NICHOL	E
67	ZGF ARCHITECTS	A
68	GRESHAM SMITH	AE
69	KPFF CONSULTING ENGINEERS	E
70	PAGE	AE

RANK	FIRM	FIRM TYPE
71	VOLKERT INC.	E
72	MEAD & HUNT INC.	EA
73	ENERCON	E
74	GEI CONSULTANTS INC.	E
75	CORGAN	A
76	PENNONI	E
77	WARE MALCOMB	AE
78	HALFF ASSOCIATES INC.	EA
79	STANLEY CONSULTANTS	EA
80	DAVID EVANS ENTERPRISES INC.	E
81	ALFRED BENESCH & CO.	E
82	CIVIL & ENVIRONMENTAL CONSULTANTS INC.	E
83	GARVER	E
84	SAM LLC	E
85	FREESE AND NICHOLS INC.	E
86	BGE INC.	E
87	BARR ENGINEERING CO.	E
88	POPULOUS	A
89	BRAUN INTERTEC CORP.	GE
90	WESTWOOD PROFESSIONAL SERVICES	E
91	KOHN PEDERSEN FOX ASSOCIATES PC	A
92	WHITMAN REQUARDT AND ASSOCIATES LLP	EA
93	MERRICK & CO.	EA
94	ARDURRA GROUP INC.	E
95	WISS JANNEY ELSTNER ASSOCIATES	EA
96	HGA	AE
97	PAPE-DAWSON ENGINEERS INC.	E
98	BOWMAN CONSULTING GROUP	E
99	AFFILIATED ENGINEERS INC.	E
100	S&ME INC.	E

KEY TO TYPE OF FIRM
 A=architect, E=engineer, EC=engineer-contractor
 AE=architect-engineer, EA=engineer-architect
 ENV=environmental, GE=geotechnical engineer
 L=landscape architect, P=planner and O=other.
 Other combinations are possible. Firms classified themselves.

sitions as part of an expansion program implemented in 2017.

“We set out to build and grow a culture-focused firm with the driving philosophy centered around providing opportunities for our employees and exceptional service to our clients,” says CEO Ernesto Aguilar. “This foundation has guided us in expanding existing services and territories, as well as penetrating new markets and geographies.”

Ardurra’s strategic plan sets goals for acquisitive growth at 20% and organic growth at about 15% per year, says Aguilar, and tactics to achieve goals must align with its market share expansion strate-



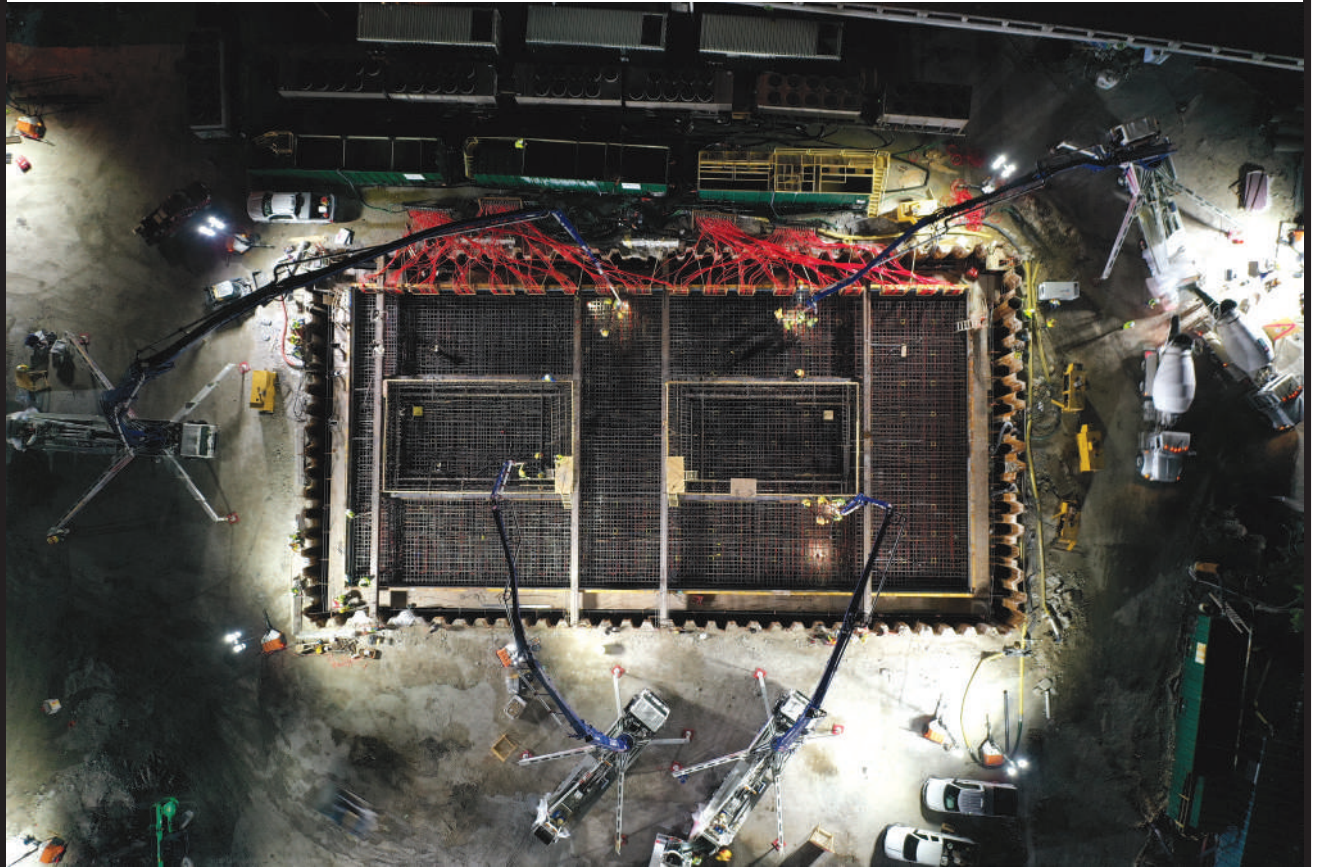
For expanded content on ENR’s Top Lists, see ENR.com/toplists.

gies. The company recently entered the transportation design services market as a result of its acquisitions, he adds.

At CMTA, recent mergers and acquisitions have enabled the company to implement significant geographical expansion. The company became a portfolio firm for equity investor Blackstone in 2021.

“Within our family of companies, we can now help our clients create and raise funds for projects, provide them with high performance-based engineering design, and provide solutions to design, build, lease, operate and guarantee performance, including systems installation and construction man-

Foundations | By Jonathan Keller



Universal Engineering Sciences (No. 42) was part of the team that placed 5,000 cu yd of 8,000-psi concrete into what will be the center pier of the Miami Signature Bridge. The pour took 33 hours, and featured 1.7 million lb of rebar. The center pier will be the principle foundation for the bridge's six arches, the tallest of which is 330 ft. The bridge is part of the broader I-395/SR836/I-95 project. More than 30 acres of community space will be created under the bridge when completed.

agement,” explains Tony Hands, electrical engineer and vice president.

Outside of ENR’s Top 10, other factors are contributing to a growth in market share for firms.

A study group of industry veterans from Gerry Salontai of Verdantas, Rod Hoffman of Smith Hoffman Consulting, Colvin Matheson of Matheson Financial Partners and Paul Chinowsky, professor of civil engineering at the University of Colorado, Boulder, has been tracking the trend over the last four years, using data from the ENR Top 500, the U.S. Bureau of Labor Statistics, U.S. Sector Economic Statistics and interviews with over 150 C-suite executives.

“What we have found through interviews is that the very large/large and mid-sized are preferred by clients due to being part of their community and

being local—understanding local dynamics to get work done effectively,” the group says. The group defines ENR firms 11-100 as large and firms 101-500 as midsized. Firms not on the Top 500 list are defined as small.

They add that the largest firms also may be turning their attention to larger, programmatic contracts “that generate revenue over a period of years rather than months.” The group also sees the largest firms focusing their efforts outside of the U.S., as well as moving towards a more “transactional and economically driven approach.”

People as a Priority

A major part of the IIJA is navigating its stipulations for funding. The moment Congress passed the act, many firms found a need for scaling up their staffing

to simply provide assistance for helping clients understand opportunities available to them.

“The world has changed in many ways over the past few years, and if your organization has not changed with it, retaining talent will be very difficult,” says Sasaki CEO James Miner. There have been multiple studies that show work-life balance, wages and quality of work and culture all play a role in staff retention, adds Miner.

Where AECOM believes it sets itself apart is through a focus on shared success.

“On one hand, providing our people with challenging work on exciting, impactful projects while encouraging continuous learning and technical skills development,” explains president Lara Poloni. “On the other hand, driving career satisfaction, success and balance through competitive compensation, a growing benefits offering and a commitment to genuine workplace flexibility via our Freedom to Grow philosophy.”

These elements combined to drive both professional and organizational growth, she adds, but there is no one size fits all for recruitment.

Houston-based civil engineering firm DEC says it has filled most of its staffing requirements using typical recruiting methods.

But on the other end, SmithGroup says that it still has 150 positions to fill despite hiring more than 150 people in the last sixth months.

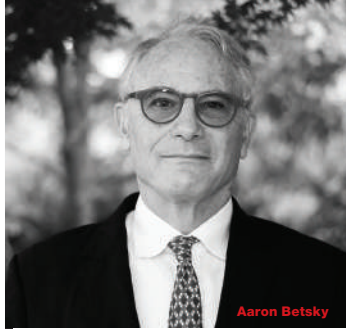
“Our challenge is not unique,” says president and managing partner Mike Medici. “Our workload continues to grow, which is a positive thing, but we must continue to find high-quality talent to fulfill our clients’ needs.”

He adds, “It may sound cliché, but we have found that our strongest selling point (and retention tool) is our culture.”

When the company culture is the right fit, firms find they don’t have to do much more to build dynamic teams. ■

DEI in Design | By Emell Adolphus

A Critical Eye on Design



Aaron Betsky



Cruz Garcia

Virginia Gov. Glenn Youngkin (R) signed an executive order “ending the teaching of inherently divisive concepts, including critical race theory” in K-12 public education on his first day in office on Jan 17. The directive fell short of a promise to ban state agencies from teaching so-called divisive concepts, but Aaron Betsky, professor at Virginia Tech, warns that similar actions around the country could have grave consequences on the future of design education.

Design is divisive, says Betsky, who doesn’t teach critical race theory but history to help students learn how to create more inclusive spaces.

“The way that laws are worded more and more is that any discussion that makes people of any race feel guilt or angst or confusion about their legacy should not be allowed,” he says. “That’s absurd because then it’s almost impossible to have a historical discussion.”

Betsky adds to a larger collective of educators and organizations, such as Design As Protest and Designing Justice + Designing Spaces, around

the country that are aiming to add equity to how buildings and cities are designed. Doing this requires asking what is “good” architecture, design and why.

“We are living in a very diverse nation,” says Betsky. “Serving those populations as a design professional, you need to understand and be to some extent part of the legacy and discussions of those populations.”

Architect Cruz Garcia, an adjunct assistant professor at Columbia University Graduate School of Architecture, Planning and Preservation, co-founded the WAI Architecture Think Tank to improve access to materials that view the profession through the lens of diversity, equity and inclusion.

“We hope people can become really critical and think about other ways of worldmaking,” says Cruz.

The pandemic has been brutal on infrastructure systems, says Cruz. “For disenfranchised communities, it’s been very brutal,” he says. “So we can’t ignore the way our cities are built and the way our towns are accessed.” ■

How To Read the Tables

KEY TO TYPE OF FIRM

A architect, **E** engineer, **EC** engineer-contractor, **AE** architect-engineer, **EA** engineer-architect, **ENV** environmental, **GE** geotechnical engineer, **L** landscape architect, **P** planner and **O** other. Other combinations are possible. Firms classified themselves.

Companies are ranked according to revenue for design services performed in 2021 in \$ millions (*). Those with subsidiaries are indicated by (†). For information on subsidiaries and where each firm worked outside of the U.S., see www.enr.com. **Firms not ranked last year. Some markets may not add up to 100% due to omission of “other” miscellaneous

market category and rounding. NA-Not available.

General Building as a category includes commercial buildings, offices, stores, educational facilities, government buildings, hospitals, medical facilities, hotels, apartments, housing, etc.

Hazardous Waste includes chemical and nuclear waste treatment, asbestos and lead abatement, etc.

Industrial Process comprises pulp and paper mills, steel mills, nonferrous metal refineries, pharmaceutical plants, chemical plants, food and other processing plants, etc.

Manufacturing includes auto, electronic assembly, textile plants, etc.

Petroleum includes refineries, petrochemical plants, offshore facilities, pipelines, etc.

Power comprises thermal and hydroelectric power plants, waste-to-energy plants, transmission lines, substations, cogeneration plants, etc.

Sewerage / Solid Waste includes sanitary and storm sewers, treatment plants, pumping plants, incinerators, industrial waste facilities, etc.

Telecommunications comprises transmission lines and cabling, towers and antennae, data centers, etc.

Transportation includes airports, bridges, roads, canals, locks, dredging, marine facilities, piers, railroads, tunnels, etc.

Water Supply includes dams, reservoirs, transmission pipelines, distribution mains, irrigation canals, desalination and potability treatment plants, pumping stations, etc.

RANK 2022	RANK 2021	FIRM	FIRM TYPE	2021 REVENUE \$ MIL.		GENERAL BUILDING	MANUFACTURING	POWER	WATER SUPPLY	SEWER / WASTE	INDUS. / PETROLEUM	TRANSPORTATION	HAZARDOUS WASTE	TELECOM
				TOTAL	INT'L									
1	1	JACOBS, Dallas, Texas†	EAC	10,691.3	3,582.0	9	7	5	10	7	12	27	20	4
2	2	AECOM, Dallas, Texas	EA	7,913.2	3,768.2	21	0	4	13	5	1	41	13	1
3	3	FLUOR, Irving, Texas†	EC	3,519.6	2,355.2	0	0	1	0	0	74	0	23	0
4	4	TETRA TECH INC., Pasadena, Calif.	E	3,296.0	979.0	9	1	8	42	12	2	5	21	0
5	6	HDR, Omaha, Neb.†	EA	2,477.1	373.1	20	0	9	10	11	1	44	1	3
6	7	WOOD, Houston, Texas	EC	2,349.8	735.4	4	6	8	3	3	55	10	11	0
7	8	WSP USA, New York, N.Y.	E	2,342.2	40.8	15	1	13	1	1	3	53	7	3
8	9	BURNS & MCDONNELL, Kansas City, Mo.†	EAC	2,126.4	108.9	11	2	40	3	3	16	9	5	9
9	10	STANTEC INC., Irvine, Calif.†	EA	1,774.0	0.0	27	1	11	13	10	7	26	2	0
10	15	KIMLEY-HORN, Raleigh, N.C.	O	1,507.7	5.3	48	0	5	3	5	0	34	0	5
11	12	HNTB COS., Kansas City, Mo.	EA	1,479.1	3.6	1	0	0	1	0	0	97	0	0
12	5	WORLEY, Houston, Texas†	EC	1,397.5	208.1	0	0	8	0	0	66	0	0	0
13	14	GENSLER, Los Angeles, Calif.	A	1,369.2	251.8	89	0	0	0	0	0	9	0	2
14	16	ARCADIS NORTH AMERICA/CALLISON RTKL, Highlands Ranch, Colo.	EA	1,361.1	163.7	20	0	0	13	6	0	8	54	0
15	11	PARSONS CORP., Centreville, Va.†	EC	1,259.5	335.8	6	0	1	3	0	1	74	14	1
16	13	BLACK & VEATCH, Overland Park, Kan.†	EC	1,226.7	253.0	9	0	49	12	13	6	0	1	9
17	19	TRC COS. INC., Windsor, Conn.	E	1,036.2	15.8	0	0	49	1	1	9	12	27	0
18	18	KIEWIT CORP., Omaha, Neb.†	EC	996.0	108.6	1	0	35	4	0	35	24	0	0
19	22	LEIDOS, Reston, Va.	E	968.2	15.2	0	6	30	0	0	0	0	64	0
20	17	SNC-LAVALIN INC., Tampa, Fla.†	O	951.1	0.0	8	4	6	6	0	4	45	19	0
21	24	TERRACON CONSULTANTS INC., Olathe, Kan.†	E	912.0	2.9	40	1	12	3	1	5	16	18	4
22	21	INTERTEK-PSI, Arlington Heights, Ill.†	EC	850.9	371.2	22	14	1	0	1	54	7	0	0
23	25	CDM SMITH, Boston, Mass.†	EC	790.5	144.2	0	0	0	32	28	0	25	14	0
24	27	NV5 GLOBAL INC., Hollywood, Fla.†	E	777.3	22.9	28	0	32	10	4	0	24	2	0
25	23	BECHTEL, Reston, Va.†	EC	772.0	297.0	0	0	4	0	0	46	3	38	8
26	26	EXP, Chicago, Ill.	EA	750.0	417.7	34	1	2	4	0	5	34	1	18
27	28	GHD INC., Irvine, Calif.†	O	690.3	263.6	13	0	1	15	15	3	13	35	0
28	31	MICHAEL BAKER INTERNATIONAL, Pittsburgh, Pa.†	EA	613.4	11.1	16	0	1	16	0	2	61	2	2
29	30	GANNETT FLEMING, Camp Hill, Pa.	EA	605.6	30.7	9	0	2	15	9	2	64	0	0
30	29	MOTT MACDONALD, Iselin, N.J.†	E	581.8	123.4	2	0	6	14	8	13	55	1	0
31	35	T.Y. LIN INTERNATIONAL, San Francisco, Calif.†	EA	581.8	283.7	14	0	0	0	3	0	81	0	0
32	33	POWER ENGINEERS INC., Hailey, Idaho	E	580.6	23.6	0	0	93	0	0	7	0	0	0
33	32	PERKINS&WILL, Chicago, Ill.†	A	572.5	126.0	92	0	0	0	0	0	7	0	0
34	36	SARGENT & LUNDY, Chicago, Ill.†	E	565.5	71.3	0	0	93	0	0	1	0	6	0
35	34	STV GROUP INC., New York, N.Y.†	EA	531.8	11.5	10	0	0	4	3	0	84	0	0
36	37	DEWBERRY, Fairfax, Va.†	EA	488.1	5.8	33	1	5	13	7	0	36	0	4
37	38	BROWN AND CALDWELL, Walnut Creek, Calif.†	E	453.6	0.0	0	0	0	19	62	0	0	19	0
38	40	ARUP, New York, N.Y.†	E	450.2	88.1	49	0	0	2	0	0	49	0	0
39	45	IBI GROUP INC., Columbus, Ohio	AE	442.0	311.1	65	2	0	0	4	0	11	0	0
40	42	GEOSYNTEC CONSULTANTS, Boca Raton, Fla.†	E	431.4	65.0	0	0	12	9	21	3	0	56	0
41	39	HOK, New York, N.Y.	AE	430.0	89.1	88	0	0	0	0	0	12	0	0
42	85	UNIVERSAL ENGINEERING SCIENCES, Orlando, Fla.†	GE	421.4	0.0	70	2	1	0	1	4	18	0	0
43	41	HKS, Dallas, Texas	A	400.5	40.5	100	0	0	0	0	0	0	0	0
44	44	S&B ENGINEERS AND CONSTRUCTORS LTD., Houston, Texas†	EC	399.7	5.1	0	0	1	0	0	86	13	0	0
45	46	KLEINFELDER, San Diego, Calif.†	EA	394.1	16.6	14	1	10	10	9	23	18	0	0
46	**	RAMBOLL, Arlington, Va.	O	393.1	0.0	7	8	7	7	10	4	0	57	0
47	52	LANGAN, Parsippany, N.J.†	E	374.0	12.5	56	0	12	0	0	0	4	29	0
48	48	KCI TECHNOLOGIES INC., Sparks, Md.†	EC	368.3	0.0	12	0	11	3	8	0	43	2	18
49	47	RS&H INC., Jacksonville, Fla.†	EA	355.0	0.0	7	7	0	0	0	0	86	0	0
50	43	WILLDAN, Anaheim, Calif.	E	353.8	0.0	38	0	32	0	0	0	14	0	9

RANK 2022	RANK 2021	FIRM	FIRM TYPE	2021 REVENUE \$ MIL.		GENERAL BUILDING	MANUFACTURING	POWER	WATER SUPPLY	SEWER / WASTE	INDUS. / PETROLEUM	TRANSPORTATION	HAZARDOUS WASTE	TELECOM
				TOTAL	INT'L									
51	59	WOOLPERT INC., Dayton, Ohio†	O	352.2	45.2	11	0	3	1	5	0	18	0	0
52	49	SKIDMORE OWINGS & MERRILL, New York, N.Y.†	AE	350.3	118.6	82	0	0	0	0	0	18	0	0
53	65	CANNONDESIGN, New York City, N.Y.	AE	345.0	6.0	100	0	0	0	0	0	0	0	0
54	54	HAZEN AND SAWYER, New York, N.Y.	E	344.2	1.6	0	0	0	33	67	0	0	0	0
55	57	LJA ENGINEERING, Houston, Texas†	E	342.9	0.0	0	0	0	5	5	3	22	5	4
56	50	CAROLLO ENGINEERS INC., Walnut Creek, Calif.	E	340.5	0.0	0	0	0	39	61	0	0	0	0
57	55	HARGROVE ENGINEERS + CONSTRUCTORS, Mobile, Ala.†	EC	335.7	2.1	2	1	4	0	0	94	0	0	0
58	70	EN ENGINEERING LLC, Warrenton, Ill.†	E	334.0	3.0	0	2	72	0	1	16	0	0	8
59	73	SCS ENGINEERS, Long Beach, Calif.†	ENV	331.7	1.6	0	0	0	0	85	0	0	15	0
60	51	JOHNSON MIRMIRAN & THOMPSON INC. (JMT), Hunt Valley, Md.†	EA	328.7	0.0	3	0	0	0	4	0	93	0	0
61	53	CHA CONSULTING INC. (CHA), Albany, N.Y.†	EA	320.0	8.1	37	8	13	2	6	4	27	2	0
62	56	VHB, Watertown, Mass.	E	314.4	0.0	27	0	7	0	3	0	57	5	0
63	66	SMITHGROUP, Detroit, Mich.	AE	302.3	3.1	99	0	0	0	0	0	1	0	0
64	68	ENGINEERING CONSULTING SERVICES (ECS), Chantilly, Va.†	E	297.9	0.0	57	4	2	2	0	1	7	0	1
65	62	THORNTON TOMASETTI, New York, N.Y.	EA	290.0	66.2	79	0	3	0	0	2	15	0	1
66	**	FUGRO USA, Houston, Texas†	GE	280.9	20.1	5	0	48	7	0	22	12	0	0
67	101	CRB, Kansas City, Mo.	EA	280.3	30.8	0	0	0	0	0	100	0	0	0
68	103	FOTH, De Pere, Wis.†	E	276.7	0.0	0	0	0	0	5	77	14	4	0
69	67	PERKINS EASTMAN, New York, N.Y.†	A	274.7	68.8	100	0	0	0	0	0	0	0	0
70	64	GREENMAN-PEDERSEN INC. (GPI), Babylon, N.Y.†	E	274.7	0.0	14	0	4	1	1	2	73	0	0
71	77	IMEG CORP., Rock Island, Ill.	E	271.8	0.0	91	3	0	0	0	3	3	0	0
72	60	DLR GROUP, Minneapolis, Minn.	AE	268.7	16.5	100	0	0	0	0	0	0	0	0
73	61	RK&K, Baltimore, Md.	E	268.5	0.0	3	0	0	3	8	2	84	0	0
74	76	OLSSON INC., Lincoln, Neb.	E	263.2	0.0	53	0	10	7	3	0	16	1	7
75	71	WOODARD & CURRAN, Portland, Maine	E	262.9	0.0	2	1	0	22	50	2	1	22	0
76	69	CONSOR ENGINEERS, Chicago, Ill.†	E	257.5	4.4	0	0	0	18	0	0	82	0	0
77	83	TRANSYSTEMS, Kansas City, Mo.†	E	256.2	0.0	0	0	0	0	0	0	100	0	0
78	118	SALAS O'BRIEN, Irvine, Calif.†	EA	254.2	16.0	70	3	2	0	0	7	1	0	17
79	58	CARDNO INC., Englewood, Colo.	E	252.5	5.4	22	0	14	2	1	16	14	0	0
80	**	JENSEN HUGHES, Baltimore, Md.	E	251.7	89.0	55	2	7	0	0	13	4	4	2
81	105	ATWELL LLC, Southfield, Mich.†	E	251.0	0.0	37	0	45	0	8	9	1	0	0
82	99	MOFFATT & NICHOL, Long Beach, Calif.†	E	246.2	18.6	0	0	0	0	0	0	100	0	0
83	72	ZGF ARCHITECTS, Portland, Ore.	A	240.2	3.2	80	0	0	0	0	0	17	0	0
84	86	GRESHAM SMITH, Nashville, Tenn.	AE	236.6	0.0	46	11	0	0	12	2	30	0	0
85	109	COLLIERS ENGINEERING & DESIGN, Red Bank, N.J.	E	236.0	0.0	40	6	4	2	7	12	16	1	10
86	78	KPFF CONSULTING ENGINEERS, Seattle, Wash.	E	227.3	2.0	70	7	2	0	3	0	19	0	0
87	81	PAGE, Washington, D.C.†	AE	227.0	66.0	96	0	0	0	0	2	3	0	0
88	89	VOLKERT INC., Mobile, Ala.	E	222.4	0.0	8	0	13	0	2	0	77	0	0
89	123	IPS-INTEGRATED PROJECT SERVICES LLC, Blue Bell, Pa.†	EA	218.9	58.1	0	0	0	0	0	98	0	0	2
90	**	BARRY-WEHMILLER DESIGN GROUP, St. Louis, Mo.	O	213.0	0.0	0	0	0	0	0	98	0	2	0
91	97	MEAD & HUNT INC., Middleton, Wis.	EA	212.6	0.0	6	0	1	3	4	20	62	0	1
92	74	ENERCON, Kennesaw, Ga.†	E	212.2	0.0	0	0	90	0	0	3	0	4	2
93	84	GEI CONSULTANTS INC., Woburn, Mass.	E	207.1	15.5	12	0	10	29	3	1	13	28	0
94	88	CORGAN, Dallas, Texas	A	204.5	1.9	36	0	0	0	0	0	27	0	37
95	91	PENNONI, Philadelphia, Pa.	E	203.8	0.0	52	0	7	2	0	4	29	0	6
96	119	WARE MALCOMB, Irvine, Calif.	AE	203.2	15.9	36	27	0	0	0	37	0	0	0
97	102	HALFF ASSOCIATES INC., Richardson, Texas	EA	201.4	0.0	23	2	1	12	11	9	34	0	0
98	82	STANLEY CONSULTANTS, Muscatine, Iowa†	EA	200.0	36.0	24	0	23	11	3	6	30	0	0
99	90	DAVID EVANS ENTERPRISES INC., Portland, Ore.†	E	198.9	0.0	17	0	3	3	3	0	52	0	0
100	112	ALFRED BENESCH & CO., Chicago, Ill.	E	197.2	0.0	4	0	0	3	6	0	87	0	0

RANK 2022	2021	FIRM	FIRM TYPE	2021 REVENUE \$ MIL.		GENERAL BUILDING	MANUFACTURING	POWER	WATER SUPPLY	SEWER / WASTE	INDUS. / PETROLEUM	TRANSPORTATION	HAZARDOUS WASTE	TELECOM
				TOTAL	INT'L									
101	96	CIVIL & ENVIRONMENTAL CONSULTANTS INC., Pittsburgh, Pa.	E	196.3	0.0	28	0	7	3	18	22	1	17	0
102	106	GARVER, North Little Rock, Ark.	E	195.8	0.0	6	0	0	13	21	0	58	0	0
103	98	SAM LLC, Austin, Texas†	E	195.0	0.0	6	0	38	3	1	19	30	0	3
104	104	FREESE AND NICHOLS INC., Fort Worth, Texas	E	195.0	0.0	3	0	0	37	36	2	15	0	0
105	116	BGE INC., Houston, Texas	E	190.0	0.0	0	0	0	0	16	0	22	0	0
106	110	BARR ENGINEERING CO., Minneapolis, Minn.	E	187.4	15.5	0	4	19	17	0	11	2	18	0
107	100	POPULOUS, Kansas City, Mo.	A	186.4	67.3	0	0	0	0	0	0	0	0	0
108	114	BRAUN INTERTEC CORP., Minneapolis, Minn.†	GE	184.5	0.0	41	0	4	3	1	23	25	0	0
109	122	WESTWOOD PROFESSIONAL SERVICES, Minneapolis, Minn.	E	177.8	0.0	36	0	56	3	1	0	4	0	0
110	130	HALEY & ALDRICH INC., Burlington, Mass.†	E	176.8	0.0	23	0	5	0	0	0	12	60	0
111	79	KOHN PEDERSEN FOX ASSOCIATES PC, New York, N.Y.	A	176.2	129.7	99	0	0	0	0	0	1	0	0
112	107	WHITMAN REQUARDT AND ASSOCIATES LLP, Baltimore, Md.	EA	175.7	0.0	23	0	0	10	7	0	57	0	2
113	113	MERRICK & CO., Greenwood Village, Colo.†	EA	175.3	10.9	31	42	8	8	0	1	1	0	0
114	190	ARDURRA GROUP INC., Tampa, Fla.†	E	172.7	0.0	8	0	0	34	32	0	25	0	0
115	115	WISS JANNEY ELSTNER ASSOCIATES, Northbrook, Ill.	EA	172.5	7.7	78	0	1	1	0	2	14	0	0
116	94	HGA, Minneapolis, Minn.	AE	172.0	1.5	96	3	2	0	0	0	0	0	0
117	131	PAPE-DAWSON ENGINEERS INC., San Antonio, Texas	E	170.8	0.0	72	4	0	7	2	0	13	0	0
118	144	BOWMAN CONSULTING GROUP, Reston, Va.	E	170.1	0.0	42	0	13	7	6	10	14	0	6
119	121	AFFILIATED ENGINEERS INC., Madison, Wis.	E	165.6	1.3	76	2	13	0	0	7	0	0	3
120	124	S&ME INC., Raleigh, N.C.	E	163.8	0.0	34	3	14	3	1	12	29	1	1
121	135	TOWER ENGINEERING PROFESSIONALS, Raleigh, N.C.	E	156.9	12.0	0	0	0	0	0	0	0	0	100
122	127	SSEO GROUP, Toledo, Ohio	EA	156.2	14.9	16	54	3	0	0	28	0	0	0
123	111	PBK, Houston, Texas	AE	155.2	0.0	100	0	0	0	0	0	0	0	0
124	139	ULTEIG ENGINEERS INC., Fargo, N.D.†	E	152.9	2.5	0	0	85	0	1	0	12	0	0
125	128	H.W. LOCHNER INC., Chicago, Ill.	E	151.7	0.0	0	0	0	0	0	0	100	0	0
126	125	SWCA ENVIRONMENTAL CONSULTANTS, Phoenix, Ariz.	ENV	151.5	0.0	8	0	51	5	1	20	6	1	0
127	129	SIMPSON GUMPERTZ & HEGER, Waltham, Mass.	E	151.4	12.4	70	2	7	3	1	3	13	0	0
128	134	MORRISON HERSHFIELD, Atlanta, Ga.†	EA	151.3	106.3	32	0	1	2	4	0	35	0	25
129	140	HENDERSON ENGINEERS INC., Lenexa, Kan.†	E	149.4	0.0	99	0	0	0	0	0	1	0	0
130	126	GZA, Norwood, Mass.†	ENV	149.3	0.0	28	16	7	9	1	5	10	10	0
131	142	WESTON & SAMPSON, Reading, Mass.†	E	146.4	0.0	0	0	5	24	33	2	11	9	0
132	150	BOLTON & MENK INC., Mankato, Minn.†	E	144.8	0.0	14	0	0	9	10	0	32	0	0
133	120	EA ENGINEERING SCIENCE AND TECH. INC., Hunt Valley, Md.	ENV	144.7	0.0	0	0	8	8	18	15	6	45	0
134	157	AMERICAN STRUCTUREPOINT, Indianapolis, Ind.	EA	144.4	0.0	21	5	0	6	9	0	57	0	2
135	163	LABELLA ASSOCIATES DPC, Rochester, N.Y.†	EA	143.8	2.3	14	0	8	13	25	6	10	24	0
136	141	NORR, Chicago, Ill.†	AE	142.4	76.2	94	0	0	0	0	0	6	0	0
137	151	TIMMONS GROUP, Richmond, Va.	E	135.5	0.0	64	2	15	2	3	0	11	0	2
138	143	MESA ASSOCIATES INC., Madison, Ala.	E	135.0	0.0	0	0	96	0	0	4	0	0	0
139	133	SHORT ELLIOTT HENDRICKSON INC. (SEH), St. Paul, Minn.	EA	134.8	0.0	25	0	0	8	11	0	55	0	0
140	138	PARAMETRIX, Seattle, Wash.	E	134.7	0.0	6	0	0	8	12	1	64	1	4
141	137	DLZ CORP., Columbus, Ohio†	EA	134.2	12.6	16	1	11	12	15	9	33	2	0
142	165	FLAD ARCHITECTS, Madison, Wis.†	AE	132.8	0.0	100	0	0	0	0	0	0	0	0
143	156	QUIDDITY ENGINEERING, Bellaire, Texas	E	132.5	0.0	49	0	0	10	17	0	16	0	0
144	136	PSOMAS, Culver City, Calif.	E	129.8	0.0	27	0	1	12	7	6	44	2	0
145	146	GAI CONSULTANTS INC., Homestead, Pa.†	E	129.3	0.0	11	0	50	2	1	2	33	1	0
146	215	CONGRUEX, Boulder, Colo.†	E	129.0	0.0	0	0	0	0	0	0	0	0	100
147	132	WALTER P MOORE, Houston, Texas	E	127.1	3.3	72	0	0	7	2	0	20	0	0
148	145	EYP ARCHITECTURE & ENGINEERING, Albany, N.Y.	AE	126.5	0.0	98	0	0	0	0	0	0	0	0
149	168	ELECTRICAL CONSULTANTS INC., Billings, Mont.†	E	125.4	0.0	0	0	90	0	0	1	0	0	0
150	160	HARDESTY & HANOVER LLC, New York, N.Y.	E	124.8	1.5	0	0	0	0	0	0	100	0	0

#69

PERKINS EASTMAN, celebrating its 40th anniversary in 2022, merged with Kliment Halsband Architects, celebrating its 50th.

RANK 2022	RANK 2021	FIRM	FIRM TYPE	2021 REVENUE \$ MIL.		GENERAL BUILDING	MANUFACTURING	POWER	WATER SUPPLY	SEWER / WASTE	INDUS. / PETROLEUM	TRANSPORTATION	HAZARDOUS WASTE	TELECOM
				TOTAL	INT'L									
151	108	PGAL, Houston, Texas	AE	124.1	0.0	44	0	0	0	0	0	56	0	0
152	152	GPD GROUP, Akron, Ohio	AE	123.9	0.0	39	0	15	0	8	5	14	0	18
153	162	GHAFFARI ASSOCIATES LLC, Dearborn, Mich.	EA	121.5	11.0	13	76	0	0	0	0	11	0	0
154	353	BEAM LONGEST & NEFF, Indianapolis, Ind.†	E	120.5	76.5	16	0	0	6	0	0	78	0	0
155	158	BL COS. INC., Meriden, Conn.	EA	116.1	0.0	77	0	3	0	0	6	12	1	0
156	155	BKF ENGINEERS, Redwood City, Calif.	E	115.1	0.0	66	2	0	2	4	1	24	0	0
157	154	COFFMAN ENGINEERS INC., Seattle, Wash.†	E	115.0	2.4	44	0	6	0	0	27	0	0	0
158	80	POND, Peachtree Corners, Ga.	EA	113.7	4.7	34	3	0	4	0	45	14	0	0
159	149	MCKIM & CREED INC., Raleigh, N.C.	O	111.5	0.0	3	15	14	14	17	11	16	0	0
160	164	HUITT-ZOLLARS INC., Dallas, Texas	EA	110.3	0.0	23	0	0	12	18	0	46	0	0
161	148	SYSKA HENNESSY GROUP, New York, N.Y.†	E	110.2	4.8	53	2	1	0	0	1	15	0	27
162	188	HR GREEN INC., Cedar Rapids, Iowa	E	108.2	0.0	19	0	0	6	19	1	40	0	5
163	166	THE BURKE GROUP LTD., Rosemont, Ill.†	E	107.9	0.0	19	9	1	9	5	2	9	0	0
164	185	WSB, Golden Valley City, Minn.	E	106.3	0.0	7	0	3	9	13	22	44	1	0
165	159	RABA KISTNER INC., San Antonio, Texas†	E	104.9	1.2	35	5	0	2	0	0	57	0	0
166	294	HBK ENGINEERING LLC, Chicago, Ill.	E	103.3	0.0	1	0	37	0	0	6	0	0	49
167	175	WGI INC., West Palm Beach, Fla.	EA	103.0	0.0	58	0	0	2	1	0	39	0	0
168	93	LEO A DALY, Omaha, Neb.	AE	103.0	16.0	90	5	0	0	0	0	4	0	0
169	172	HANSON PROFESSIONAL SERVICES INC., Springfield, Ill.	E	102.5	2.2	14	0	9	3	3	2	68	0	0
170	181	WUNDERLICH-MALEC ENGINEERING INC., Eden Prairie, Minn.	EA	101.8	0.0	5	39	5	0	0	49	0	0	0
171	171	BARGE DESIGN SOLUTIONS, Nashville, Tenn.†	EA	101.2	0.0	17	14	0	13	12	1	18	3	8
172	170	LPA INC., Irvine, Calif.	AE	100.7	0.0	100	0	0	0	0	0	0	0	0
173	178	STRAND ASSOCIATES INC., Madison, Wis.	E	100.4	0.0	1	0	0	14	36	6	38	0	0
174	**	DCCM, Houston, Texas†	E	100.0	0.0	0	0	12	36	24	0	26	0	2
175	169	HASKELL, Jacksonville, Fla.†	O	99.7	12.6	15	18	0	0	0	54	13	0	0
176	174	VANDERWEIL ENGINEERS, Boston, Mass.	E	99.4	0.0	56	0	15	0	0	0	0	0	28
177	240	CMTA INC., Prospect, Ky.	EC	99.0	0.0	97	0	0	0	0	2	1	0	0
178	210	LS3P, Charleston, S.C.	A	97.7	0.0	98	0	0	0	0	0	2	0	0
179	200	WADE TRIM, Detroit, Mich.†	E	97.0	0.0	0	0	1	13	49	15	14	0	0
180	226	DENNIS GROUP, Springfield, Mass.†	EC	96.8	13.5	0	0	0	0	0	100	0	0	0
181	209	ELKUS MANFREDI ARCHITECTS, Boston, Mass.	A	96.5	0.0	100	0	0	0	0	0	0	0	0
182	308	RMA GROUP, Rancho Cucamonga, Calif.†	GE	96.1	0.0	28	0	2	1	2	1	65	0	0
183	189	WILSON & CO. INC. ENGINEERS & ARCHITECTS, Albuquerque, N.M.	EA	95.9	0.0	8	0	2	7	4	2	71	0	0
184	176	COBB FENDLEY & ASSOCIATES INC., Houston, Texas	E	95.6	0.0	0	0	3	3	3	4	52	0	34
185	218	KTGY ARCHITECTURE + PLANNING, Irvine, Calif.	O	94.7	0.0	100	0	0	0	0	0	0	0	0
186	184	TECTONIC ENG'G CONSULT. GEOLOGISTS & SURVEYORS, Mountainville, N.Y.	E	93.3	0.0	32	3	4	0	1	0	43	0	17
187	192	NINYO & MOORE GEOTECH. & ENVIRO. SCIENCES, San Diego, Calif.	GE	93.0	0.0	42	0	6	11	12	1	18	7	3
188	87	ZACHRY GROUP, San Antonio, Texas†	EC	93.0	1.0	0	0	40	0	0	60	0	0	0
189	203	SCHNABEL ENGINEERING, Glen Allen, Va.†	GE	92.9	0.0	21	0	2	49	3	0	14	3	0
190	207	FISHBECK, Grand Rapids, Mich.	EA	92.9	0.0	19	5	0	7	15	3	49	3	0
191	238	UNITED ENGINEERS & CONSTRUCTORS INC., Mt. Laurel, N.J.†	EC	91.6	0.0	0	0	100	0	0	0	0	0	0
192	197	AO ARCHITECTS, Orange, Calif.	A	91.1	1.9	100	0	0	0	0	0	0	0	0
193	202	GOODWYN MILLS AND CAWOOD INC., Montgomery, Ala.	AE	90.8	0.0	47	4	0	9	6	1	13	0	0
194	161	EWINGCOLE, Philadelphia, Pa.	AE	90.6	0.0	54	0	0	0	0	46	0	0	0
195	256	VERDANTAS, Dublin, Ohio†	ENV	90.1	0.0	8	0	4	18	8	0	3	58	0
196	250	DGA PLANNING ARCHITECTURE INTERIORS, Mountain View, Calif.	A	88.7	0.0	96	0	0	0	0	0	0	0	4
197	206	NEEL-SCHAFFER INC., Jackson, Miss.†	E	88.6	0.0	14	0	0	5	7	0	50	4	3
198	227	COWI NORTH AMERICA, Seattle, Wash.	E	88.2	19.5	0	0	5	0	0	0	95	0	0
199	167	INTEGRAL GROUP, Oakland, Calif.	E	87.5	58.5	95	1	0	0	0	0	1	0	0
200	199	SMITH SECKMAN REID INC., Nashville, Tenn.	E	87.1	1.5	69	8	0	5	2	1	12	1	0

RANK 2022	2021	FIRM	FIRM TYPE	2021 REVENUE \$ MIL.		GENERAL BUILDING	MANUFACTURING	POWER	WATER SUPPLY	SEWER / WASTE	INDUS. / PETROLEUM	TRANSPORTATION	HAZARDOUS WASTE	TELECOM
				TOTAL	INT'L									
201	198	GREELEY AND HANSEN , Chicago, Ill. †	E	86.5	0.0	0	0	0	15	85	0	0	0	0
202	195	CLARK NEXSEN , Virginia Beach, Va. †	AE	85.6	3.5	79	0	0	0	0	3	16	0	1
203	187	HED , Southfield, Mich.	AE	85.5	0.0	91	0	0	0	0	0	0	0	9
204	180	DOWL , Redmond, Wash.	E	85.5	0.0	16	0	0	18	2	2	61	0	0
205	183	BURGESS & NIPLÉ INC. , Columbus, Ohio	EA	84.7	0.0	10	0	0	8	27	0	49	1	0
206	201	PARKHILL , Lubbock, Texas	AE	84.4	0.0	52	0	0	6	17	0	18	0	0
207	179	KLJ , Bismarck, N.D.	E	84.0	0.0	2	0	2	2	1	14	66	0	7
208	173	HMC ARCHITECTS , Ontario, Calif.	A	83.7	0.0	100	0	0	0	0	0	0	0	0
209	208	H2M ARCHITECTS + ENGINEERS , Melville, N.Y. †	EA	83.1	0.0	48	0	5	28	6	1	0	11	0
210	224	OHM ADVISORS , Livonia, Mich.	EA	83.1	0.0	14	0	0	12	14	0	51	1	0
211	214	RSP , Minneapolis, Minn.	AE	82.7	0.0	88	11	0	0	0	0	0	0	0
212	191	HUCKABEE , Fort Worth, Texas	AE	82.6	0.0	100	0	0	0	0	0	0	0	0
213	219	TIGHE & BOND INC. , Westfield, Mass.	E	82.1	0.0	23	0	6	26	22	0	7	16	0
214	216	PATRICK ENGINEERING INC. , Lisle, Ill.	E	81.8	0.0	0	0	30	2	5	10	40	0	4
215	223	BCC ENGINEERING INC. , Miami, Fla. †	E	81.1	3.8	4	0	0	0	0	0	96	0	0
216	233	INFRASTRUCTURE CONSULTING & ENGINEERING PLLC , Columbia, S.C.	E	81.0	0.0	0	0	0	0	0	0	100	0	0
217	204	HORD COPLAN MACHT , Baltimore, Md.	A	80.3	0.0	100	0	0	0	0	0	0	0	0
218	254	CUSHING TERRELL , Billings, Mont.	EA	79.8	1.1	100	0	0	0	0	0	0	0	0
219	212	CRAWFORD MURPHY & TILLY INC. , Springfield, Ill.	EA	79.3	0.0	1	0	0	8	11	0	79	0	1
220	220	FARNSWORTH GROUP INC. , Bloomington, Ill.	EA	79.1	0.0	48	9	3	3	8	15	13	0	0
221	419	THE YATES COS. INC. , Philadelphia, Miss. †	EC	78.9	0.0	0	0	0	0	0	100	0	0	0
222	225	GEOENGINEERS INC. , Redmond, Wash.	E	78.8	0.0	29	0	2	11	2	16	10	19	0
223	**	KENNEDY/JENKS CONSULTANTS INC. , San Francisco, Calif.	E	78.5	0.0	0	7	0	45	32	5	4	7	0
224	253	WOOD RODGERS INC. , Sacramento, Calif.	E	78.2	0.0	5	0	0	25	3	0	26	0	0
225	153	PRIMORIS , Dallas, Texas	E	76.9	7.2	0	0	54	0	0	46	0	0	0
226	196	MCCORMICK TAYLOR INC. , Philadelphia, Pa. †	E	76.5	0.0	0	0	0	0	0	0	100	0	0
227	221	A. MORTON THOMAS AND ASSOCIATES INC. , Rockville, Md.	E	76.4	0.0	3	0	0	4	1	0	92	0	0
228	217	DRMP INC. , Orlando, Fla.	E	76.2	0.0	3	0	0	0	0	0	97	0	0
229	232	STUDIOS ARCHITECTURE , Washington, D.C.	A	76.2	14.0	100	0	0	0	0	0	0	0	0
230	273	CORE STATES GROUP , Duluth, Ga. †	EA	76.0	0.0	78	4	8	0	0	10	0	0	0
231	324	NETWORK CONNEX , Downers Grove, Ill. †	E	76.0	0.0	0	0	0	0	0	0	0	0	100
232	246	SHIVE-HATTERY , Cedar Rapids, Iowa †	AE	75.7	0.0	59	19	1	3	1	0	14	0	0
233	229	COOPER CARRY , Atlanta, Ga.	A	74.4	0.0	100	0	0	0	0	0	0	0	0
234	299	CESO INC. , Miamisburg, Ohio	AE	73.9	0.0	97	0	0	0	0	0	3	0	0
235	228	BALLINGER , Philadelphia, Pa.	AE	73.0	0.0	100	0	0	0	0	0	0	0	0
236	259	SASAKI , Boston, Mass.	O	73.0	14.4	46	0	0	0	0	0	0	0	0
237	222	SOLOMON CORDWELL BUENZ (SCB) , Chicago, Ill.	A	72.4	0.0	91	0	0	0	0	0	9	0	0
238	234	SHANNON & WILSON INC. , Seattle, Wash.	GE	72.1	2.2	3	0	1	3	2	3	70	0	0
239	274	NOVA ENGINEERING & ENVIRONMENTAL LLC , Kennesaw, Ga.	E	71.7	0.0	46	11	9	0	0	0	22	5	0
240	241	J-U-B ENGINEERS INC. , Meridian, Idaho †	E	71.0	0.0	0	0	0	0	31	0	30	0	39
241	231	BURNS ENGINEERING INC. , Philadelphia, Pa.	E	70.7	0.0	14	0	4	0	3	0	79	0	0
242	235	TLC ENGINEERING SOLUTIONS INC. , Orlando, Fla.	E	70.4	0.0	96	0	0	0	0	0	3	0	0
243	279	ENSAFE INC. , Memphis, Tenn.	E	70.0	0.0	10	16	0	8	2	0	0	50	1
244	262	AKRF INC. , New York, N.Y.	E	69.8	0.0	23	0	7	13	0	0	36	21	0
245	251	MARK THOMAS , San Jose, Calif.	E	69.6	0.0	0	0	8	1	8	0	83	0	0
246	267	OTAK INC. , Portland, Ore. †	EA	69.1	3.1	48	0	0	8	0	0	44	0	0
247	249	MIDDOUGH INC. , Cleveland, Ohio	EA	69.0	0.0	6	8	6	0	0	80	0	0	0
248	286	GENESIS AEC , Blue Bell, Pa.	EA	68.5	0.0	0	0	0	0	0	99	0	0	1
249	**	WRNS STUDIO , San Francisco, Calif.	A	68.0	0.0	100	0	0	0	0	0	0	0	0
250	306	ISG , Mankato, Minn. †	EA	67.6	0.0	54	7	0	10	8	13	4	0	5 †

#118

BOWMAN will serve as a partner for Drive Clean Rural USA, a DOE-funded project aiming to make alternative fuels more accessible in rural areas.

RANK 2022	RANK 2021	FIRM	FIRM TYPE	2021 REVENUE \$ MIL.		GENERAL BUILDING	MANUFACTURING	POWER	WATER SUPPLY	SEWER / WASTE	INDUS. / PETROLEUM	TRANSPORTATION	HAZARDOUS WASTE	TELECOM
				TOTAL	INT'L									
251	237	THE S/L/A/M COLLABORATIVE, Glastonbury, Conn.†	AE	67.3	0.0	100	0	0	0	0	0	0	0	0
252	255	TWINING INC., Long Beach, Calif.	GE	67.0	0.0	69	0	0	5	2	0	25	0	0
253	269	GEO-LOGIC ASSOCIATES INC., Ontario, Calif.†	ENV	67.0	1.6	0	0	0	8	18	6	0	1	0
254	257	ANVIL CORP., Bellingham, Wash.†	E	66.4	0.0	0	5	2	0	0	93	0	0	0
255	**	CDI ENGINEERING SOLUTIONS, Houston, Texas	E	66.0	0.0	3	0	2	0	0	70	9	0	0
256	271	CPL, Fairport, N.Y.	AE	65.9	0.0	83	0	0	4	4	0	9	0	0
257	194	BRPH COS. INC., Melbourne, Fla.†	EA	65.9	1.6	29	26	0	0	0	0	0	0	0
258	280	ESP ASSOCIATES INC., Fort Mill, S.C.†	E	65.2	0.0	48	0	8	0	0	0	30	0	0
259	277	MCMILLAN PAZDAN SMITH LLC, Greenville, S.C.	A	65.1	0.0	91	8	0	0	0	0	1	0	0
260	275	REMINGTON & VERNICK ENGINEERS INC., Cherry Hill, N.J.	E	65.0	0.0	6	0	0	8	10	0	13	0	0
261	236	PRIME AE GROUP INC., Baltimore, Md.†	EA	65.0	0.0	26	0	0	13	7	0	54	0	0
262	310	P2S INC., Long Beach, Calif.	E	64.8	0.0	89	4	0	1	0	2	4	0	0
263	252	JAROS BAUM & BOLLES, New York, N.Y.	E	64.4	0.0	93	0	0	0	0	0	2	0	5
264	261	FEHR & PEERS, Walnut Creek, Calif.	E	64.3	0.0	0	0	0	0	0	0	100	0	0
265	230	WATG, Irvine, Calif.	A	64.1	49.3	100	0	0	0	0	0	0	0	0
266	303	EUA (EPPSTEIN UHEN ARCHITECTS INC.), Milwaukee, Wis.	A	64.0	0.0	92	7	0	0	0	1	0	0	0
267	296	BAXTER & WOODMAN INC., Crystal Lake, Ill.†	E	63.9	0.0	0	0	0	34	37	0	25	0	0
268	244	CO ARCHITECTS, Los Angeles, Calif.	A	63.7	0.0	100	0	0	0	0	0	0	0	0
269	247	T&M ASSOCIATES, Middletown, N.J.†	E	63.7	0.0	6	0	3	14	15	3	26	0	0
270	260	LITTLE DIVERSIFIED ARCHITECTURAL CONSULTING INC., Charlotte, N.C.	AE	63.2	0.0	100	0	0	0	0	0	0	0	0
271	281	VLK ARCHITECTS INC., Fort Worth, Texas	A	63.0	0.0	100	0	0	0	0	0	0	0	0
272	268	ROSS & BARUZZINI INC., St. Louis, Mo.	E	62.3	4.2	64	0	3	0	0	3	27	0	3
273	313	HART HOWERTON, New York, N.Y.†	O	62.1	7.4	100	0	0	0	0	0	0	0	0
274	182	CUNNINGHAM, Minneapolis, Minn.	A	62.1	0.0	100	0	0	0	0	0	0	0	0
275	242	WALKER CONSULTANTS, Tampa, Fla.	EA	61.6	0.0	85	0	0	0	0	0	6	0	0
276	422	ALFATECH CONSULTING ENGINEERS INC., San Jose, Calif.	E	61.3	0.0	55	0	0	0	0	0	0	0	45
277	266	NAC ARCHITECTURE, Spokane, Wash.	A	60.8	0.0	100	0	0	0	0	0	0	0	0
278	265	EMH&T, New Albany, Ohio	E	60.6	0.0	71	0	0	3	4	0	22	0	0
279	276	TKDA, Saint Paul, Minn.†	EA	60.6	0.0	9	15	4	1	5	4	62	0	0
280	243	WOLD ARCHITECTS AND ENGINEERS, Saint Paul, Minn.†	AE	60.5	0.0	100	0	0	0	0	0	0	0	0
281	321	MOODY NOLAN, Columbus, Ohio	A	60.2	0.0	95	0	0	0	0	0	5	0	0
282	330	E4H ENVIRONMENTS FOR HEALTH ARCHITECTURE, Dallas, Texas	A	60.1	0.0	100	0	0	0	0	0	0	0	0
283	258	AKF GROUP, New York, N.Y.	E	60.0	0.0	98	0	0	0	0	1	1	0	0
284	278	ORBITAL ENGINEERING INC., Pittsburgh, Pa.	E	60.0	0.0	0	2	17	0	2	33	5	0	42
285	293	BARTON & LOGUIDICE DPC, Liverpool, N.Y.†	E	59.7	0.0	3	1	2	15	37	1	25	6	0
286	**	NORTHEAST-WESTERN ENERGY SYSTEMS, Philadelphia, Pa.	O	59.7	0.0	0	0	100	0	0	0	0	0	0
287	245	SYSTRA USA, New York, N.Y.†	EC	59.4	3.1	0	0	0	0	0	0	100	0	0
288	335	MCADAMS, Durham, N.C.	E	59.4	0.0	86	0	4	5	0	3	2	0	0
289	305	SME, Plymouth, Mich.	E	59.3	0.0	46	13	8	2	2	8	20	0	0
290	270	MOSELEY ARCHITECTS, Richmond, Va.	AE	58.4	0.0	100	0	0	0	0	0	0	0	0
291	291	ROBERT A.M. STERN ARCHITECTS, New York, N.Y.	A	58.3	11.2	100	0	0	0	0	0	0	0	0
292	317	WALDEMAR S. NELSON AND CO. INC., New Orleans, La.	EA	58.0	29.0	0	0	4	0	0	43	3	1	0
293	377	GBA (GEORGE BUTLER ASSOCIATES), Lenexa, Kan.†	EC	58.0	0.0	33	0	0	0	17	21	28	2	0
294	**	RMF ENGINEERING INC., Baltimore, Md.	E	58.0	0.0	43	14	43	0	0	0	0	0	0
295	289	BARTLETT & WEST INC., Topeka, Kan.†	E	57.7	0.0	12	0	0	19	18	0	52	0	0
296	298	DESIMONE CONSULTING ENGINEERS, New York, N.Y.	E	57.1	2.2	95	0	0	0	0	0	2	0	2
297	287	LARSON DESIGN GROUP INC., Williamsport, Pa.	EA	57.0	0.0	35	0	0	2	4	6	41	0	0
298	248	BURROW GLOBAL LLC, Houston, Texas†	EA	57.0	0.0	0	0	0	0	0	97	0	0	0
299	282	KISINGER CAMPO & ASSOCIATES CORP., Tampa, Fla.	E	56.1	0.0	0	0	0	0	0	0	100	0	0
300	283	RCM TECHNOLOGIES INC., Pennsauken, N.J.†	EA	55.6	15.2	3	0	55	0	0	18	25	0	0

RANK 2022	2021	FIRM	FIRM TYPE	2021 REVENUE \$ MIL.		GENERAL BUILDING	MANUFACTURING	POWER	WATER SUPPLY	SEWER / WASTE	INDUS. / PETROLEUM	TRANSPORTATION	HAZARDOUS WASTE	TELECOM
				TOTAL	INT'L									
301	284	ME ENGINEERS, Golden, Colo.†	E	55.5	10.0	99	0	0	0	0	0	1	0	0
302	300	MSA PROFESSIONAL SERVICES, Baraboo, Wis.	EA	55.5	0.0	16	0	0	15	33	0	30	4	0
303	272	SRF CONSULTING GROUP INC., Minneapolis, Minn.	E	55.1	0.0	0	0	0	0	0	0	100	0	0
304	**	HLW, New York, N.Y.	O	55.0	6.0	100	0	0	0	0	0	0	0	0
305	205	HUMPHREYS & PARTNERS ARCHITECTS, Dallas, Texas†	A	55.0	0.0	100	0	0	0	0	0	0	0	0
306	328	MS CONSULTANTS INC., Columbus, Ohio	EA	54.9	0.0	10	0	0	5	5	0	0	0	0
307	297	D'AMATO CONVERSANO INC. DBA DCI ENGINEERS, Seattle, Wash.	E	54.3	0.0	91	0	0	0	0	6	2	0	1
308	316	COLLINS ENGINEERS INC., Chicago, Ill.	E	53.7	0.0	6	0	1	1	1	1	91	0	0
309	380	HUNT GUILLOT & ASSOCIATES LLC, Ruston, La.	E	53.5	0.0	0	1	4	0	0	94	0	0	0
310	315	MARTIN/MARTIN INC., Lakewood, Colo.†	E	53.2	0.0	52	0	0	2	6	12	21	0	1
311	311	AYERS SAINT GROSS, Baltimore, Md.	A	52.6	8.5	100	0	0	0	0	0	0	0	0
312	**	LOCKWOOD ANDREWS & NEWNAM INC., Houston, Texas	EA	52.6	0.0	2	0	0	21	43	0	34	0	0
313	292	QUINN EVANS, Ann Arbor, Mich.	A	52.4	0.0	92	0	0	0	0	0	1	0	0
314	**	BSI ENGINEERING, Cincinnati, Ohio	EA	52.4	0.0	2	41	0	0	0	57	0	0	0
315	347	DRAPER ADEN ASSOCIATES INC., Richmond, Va.†	E	52.0	0.0	38	10	25	3	10	10	2	0	3
316	318	WRIGHT-PIERCE, Andover, Mass.	E	52.0	0.0	0	0	0	19	76	1	4	0	0
317	**	SMMA I SYMMES MAINI & MCKEE ASSOCIATES, Cambridge, Mass.	AE	51.7	0.0	100	0	0	0	0	0	0	0	0
318	314	AYRES, Eau Claire, Wis.	EA	51.7	0.0	8	0	0	15	6	0	33	0	2
319	**	MATRIX NEW WORLD ENGINEERING, Florham Park, N.J.	E	51.5	0.0	10	5	20	10	10	5	30	10	0
320	304	THE MANNIK & SMITH GROUP INC., Maumee, Ohio	E	51.5	0.0	19	16	5	6	10	10	29	4	2
321	**	DEGENKOLB ENGINEERS, San Francisco, Calif.	E	50.5	0.0	100	0	0	0	0	0	0	0	0
322	**	ENGLAND-THIMS & MILLER INC., Jacksonville, Fla.†	E	50.4	0.0	76	0	2	0	0	0	22	0	0
323	**	R. S. MOWERY & SONS INC., Mechanicsburg, Pa.	EA	50.0	0.0	100	0	0	0	0	0	0	0	0
324	**	SHEPLEY BULFINCH, Boston, Mass.	A	49.9	0.0	100	0	0	0	0	0	0	0	0
325	348	MANHARD CONSULTING LTD., Lincolnshire, Ill.†	E	49.9	0.0	99	0	0	0	0	0	0	0	0
326	358	GEOCON, San Diego, Calif.	GE	49.6	0.0	71	2	1	2	1	6	16	0	1
327	339	KIER & WRIGHT, Santa Clara, Calif.	E	49.5	0.0	89	0	3	0	8	0	0	0	1
328	309	FUSS & O'NEILL INC., Manchester, Conn.	E	49.5	0.0	21	4	2	10	11	10	22	6	0
329	336	HILLIS-CARNES ENGINEERING ASSOCIATES INC., Annapolis Junction, Md.	E	49.5	0.0	100	0	0	0	0	0	0	0	0
330	264	RETTEW ASSOCIATES INC., Lancaster, Pa.†	E	49.1	0.0	22	9	9	0	6	32	9	0	0
331	319	PS&S, Warren, N.J.	EA	48.8	0.0	38	0	18	1	11	29	2	0	0
332	**	WITHERSRAVENEL INC., Cary, N.C.	EC	48.5	0.0	51	0	0	5	14	0	2	0	0
333	312	MORRISON-MAIERLE INC., Helena, Mont.	E	47.8	0.0	21	0	0	6	19	4	30	0	0
334	333	THOMPSON ENGINEERING, Mobile, Ala.	EA	47.7	0.0	13	6	11	2	1	18	40	3	2
335	290	MAGNUSSON KLEMENCIC ASSOCIATES, Seattle, Wash.	E	47.7	6.5	85	0	0	0	0	0	14	0	0
336	346	SPEC SERVICES INC., Fountain Valley, Calif.	E	47.5	0.0	0	0	0	1	1	98	0	0	0
337	369	DAVIS PARTNERSHIP ARCHITECTS, Denver, Colo.	A	47.5	0.0	100	0	0	0	0	0	0	0	0
338	302	AI ENGINEERS INC., Middletown, Conn.	E	47.5	0.0	18	0	7	10	9	0	56	0	0
339	285	DE CORP., Houston, Texas	E	47.3	0.0	0	0	0	36	12	0	32	0	0
340	325	PROFESSIONAL ENGINEERING CONSULTANTS PA, Wichita, Kan.	E	47.3	0.0	38	8	8	10	5	6	25	0	0
341	345	WILEYIWILSON, Lynchburg, Va.	AE	47.1	0.0	74	0	9	4	5	5	2	0	1
342	301	THE THRASHER GROUP INC., Bridgeport, W.Va.	EA	46.5	0.0	24	2	4	15	22	18	13	0	0
343	343	MODJESKI AND MASTERS INC., Mechanicsburg, Pa.	E	46.3	0.0	0	0	0	0	0	0	100	0	0
344	387	BALA CONSULTING ENGINEERS, King of Prussia, Pa.	E	46.1	0.0	97	0	0	0	0	0	0	0	3
345	432	ATCS PLC, Herndon, Va.	E	46.1	0.0	4	0	0	0	3	0	79	0	0
346	375	HEAPY, Dayton, Ohio†	E	46.0	0.0	97	2	0	0	0	0	1	0	0
347	**	TAI ENGINEERING, Owings Mills, Md.	EC	46.0	0.0	11	83	2	0	0	4	0	0	0
348	329	LHB INC., Duluth, Minn.†	EA	46.0	0.0	48	0	0	0	0	28	20	0	0
349	381	JORDAN & SKALA ENGINEERS, Norcross, Ga.	E	46.0	0.0	100	0	0	0	0	0	0	0	0
350	331	ARM GROUP ENTERPRISES INC., Hershey, Pa.†	E	45.4	0.0	12	13	5	2	40	1	17	0	0

RANK 2022	RANK 2021	FIRM	FIRM TYPE	2021 REVENUE \$ MIL.		GENERAL BUILDING	MANUFACTURING	POWER	WATER SUPPLY	SEWER / WASTE	INDUS. / PETROLEUM	TRANSPORTATION	HAZARDOUS WASTE	TELECOM
				TOTAL	INT'L									
351	351	PBS ENGINEERING AND ENVIRONMENTAL INC., Portland, Ore.	E	45.4	0.0	33	4	2	3	8	1	22	24	0
352	326	I. C. THOMASSON ASSOCIATES INC., Nashville, Tenn. †	E	45.2	0.0	75	1	6	1	0	13	3	0	0
353	354	BSA LIFESTRUCTURES, Indianapolis, Ind.	AE	45.1	0.0	100	0	0	0	0	0	0	0	0
354	334	MCLAREN ENGINEERING GROUP, Woodcliff Lake, N.J.	E	44.8	0.0	40	0	5	0	0	0	55	0	0
355	350	SUNRISE ENGINEERING INC., Fillmore, Utah	E	44.8	0.0	23	0	1	22	8	20	14	0	0
356	357	KAPUR & ASSOCIATES INC., Milwaukee, Wis.	E	44.7	0.0	6	0	35	1	1	4	51	1	0
357	295	LMN ARCHITECTS, Seattle, Wash.	A	44.7	0.0	96	0	0	0	0	0	4	0	0
358	332	THE BECK GROUP, Dallas, Texas	A	44.5	1.7	98	0	0	0	0	0	2	0	0
359	408	NILES BOLTON ASSOCIATES, Atlanta, Ga.	A	44.2	0.0	100	0	0	0	0	0	0	0	0
360	360	HERBERT ROWLAND & GRUBIC INC., Harrisburg, Pa.	E	43.7	0.0	19	0	0	17	21	0	24	0	0
361	368	M&S ENGINEERING LLC, Spring Branch, Texas	E	43.5	0.0	5	0	85	5	0	0	5	0	0
362	362	BOHANNAN HUSTON INC., Albuquerque, N.M.	E	43.4	0.0	19	10	0	12	11	0	24	0	0
363	367	STEINBERG HART, Los Angeles, Calif.	A	43.3	0.0	100	0	0	0	0	0	0	0	0
364	239	EXYTE AMERICAS HOLDING INC., Plano, Texas †	EC	43.2	0.0	0	100	0	0	0	0	0	0	0
365	**	STELLAR, Jacksonville, Fla.	E	43.1	4.8	6	0	0	0	0	94	0	0	0
366	442	THE VERTEX COS. INC., Weymouth, Mass. †	E	42.8	0.0	41	5	5	0	0	10	30	10	0
367	359	HUBBELL ROTH & CLARK INC., Bloomfield Hills, Mich.	EA	42.8	0.0	4	0	1	14	26	6	46	0	0
368	340	FFKR ARCHITECTS, Salt Lake City, Utah	A	42.5	0.0	100	0	0	0	0	0	0	0	0
369	366	GRAEF, Milwaukee, Wis.	EA	42.2	0.0	40	12	1	6	8	5	28	0	0
370	263	V3 COS., Woodridge, Ill. †	E	42.2	2.7	42	0	17	5	0	0	33	0	0
371	344	LIONAKIS, Sacramento, Calif.	AE	41.9	0.0	100	0	0	0	0	0	0	0	0
372	393	BWBR, Saint Paul, Minn.	A	41.6	0.0	91	9	0	0	0	0	0	0	0
373	355	HOUSTON ENGINEERING INC., Fargo, N.D.	E	41.3	0.0	0	0	0	8	4	0	14	0	0
374	371	BOSWELL ENGINEERING INC., South Hackensack, N.J.	E	41.3	0.0	4	0	20	4	5	0	65	2	0
375	342	KIRKSEY ARCHITECTS INC., Houston, Texas	A	40.5	0.0	90	0	0	0	0	0	0	0	10
376	356	TAIT, Santa Ana, Calif.	EA	40.4	0.0	56	0	6	0	1	8	8	2	18
377	413	PRIMERA ENGINEERS LTD., Chicago, Ill.	EA	40.3	0.0	13	0	60	0	0	0	27	0	0
378	363	RDG PLANNING & DESIGN, Des Moines, Iowa	A	40.0	0.0	92	0	0	0	0	0	1	0	0
379	392	KRAZAN & ASSOCIATES, Clovis, Calif.	E	39.7	0.0	61	3	4	5	1	4	13	6	3
380	374	LANDRUM & BROWN INC., Cincinnati, Ohio †	O	39.7	14.3	2	0	0	0	0	0	98	0	0
381	**	SGA, Boston, Mass. †	A	39.6	0.0	100	0	0	0	0	0	0	0	0
382	390	THE LIRO GROUP, Syosset, N.Y. †	EA	39.5	0.0	50	0	0	0	0	0	19	13	17
383	463	MILHOUSE ENGINEERING & CONSTRUCTION INC., Chicago, Ill. †	EC	39.5	0.0	30	0	34	0	1	0	29	0	5
384	372	RRC POWER & ENERGY LLC, Round Rock, Texas	O	39.4	0.0	0	0	100	0	0	0	0	0	0
385	349	TPG ARCHITECTURE LLP, New York, N.Y.	A	39.0	3.5	100	0	0	0	0	0	0	0	0
386	410	LEIGHTON GROUP INC., Irvine, Calif. †	GE	39.0	0.0	62	0	0	8	0	3	23	3	3
387	427	MATRIX TECHNOLOGIES INC., Maumee, Ohio	EA	38.9	0.0	0	84	0	0	0	16	0	0	0
388	373	FENTRESS ARCHITECTS, Denver, Colo.	A	38.9	0.0	48	0	0	0	0	0	52	0	0
389	395	ZYSCOVICH ARCHITECTS, Miami, Fla.	A	38.8	0.0	94	0	0	0	0	0	6	0	0
390	**	GALLOWAY & CO. INC., Greenwood Village, Colo.	EA	38.8	0.0	100	0	0	0	0	0	0	0	0
391	379	MAZZETTI, San Francisco, Calif.	E	38.7	0.0	15	0	0	0	0	0	4	0	2
392	388	MACGREGOR ASSOCIATES ARCHITECTS INC., Atlanta, Ga.	A	38.6	0.0	100	0	0	0	0	0	0	0	0
393	**	WALLACE DESIGN COLLECTIVE, Tulsa, Okla.	E	38.6	0.0	91	0	0	0	3	6	0	0	0
394	430	SANBORN HEAD & ASSOCIATES INC., Concord, N.H.	E	38.5	6.2	34	0	9	0	22	0	0	36	0
395	439	SHEEHAN NAGLE HARTRAY ARCHITECTS LTD., Chicago, Ill. †	A	38.4	8.1	11	0	0	0	0	0	0	0	89
396	407	TREANORHL, Lawrence, Kan.	A	38.2	0.0	73	0	0	0	0	7	2	0	0
397	383	CTL ENGINEERING INC., Columbus, Ohio †	EA	37.9	0.0	40	5	4	6	3	3	38	0	1
398	396	WK DICKSON & CO. INC., Charlotte, N.C.	E	37.9	0.0	0	0	0	20	24	10	29	0	0
399	414	JLG ARCHITECTS, Minneapolis, Minn.	A	37.5	0.0	100	0	0	0	0	0	0	0	0
400	412	THE OSBORN ENGINEERING CO., Cleveland, Ohio †	EA	37.2	0.0	41	7	3	6	11	7	17	0	9

RANK 2022	2021	FIRM	FIRM TYPE	2021 REVENUE \$ MIL.		GENERAL BUILDING	MANUFACTURING	POWER	WATER SUPPLY	SEWER / WASTE	INDUS. / PETROLEUM	TRANSPORTATION	HAZARDOUS WASTE	TELECOM
				TOTAL	INT'L									
401	**	BRIDGEFARMER & ASSOCIATES INC., Dallas, Texas	E	37.0	0.0	0	0	0	0	0	0	100	0	0
402	428	JCJ ARCHITECTURE, Hartford, Conn.	A	36.6	0.0	100	0	0	0	0	0	0	0	0
403	394	NEWCOMB & BOYD, Atlanta, Ga.	E	36.6	0.0	85	1	0	0	0	0	6	0	7
404	397	GFF INC., Dallas, Texas	A	36.6	0.0	100	0	0	0	0	0	0	0	0
405	433	CRAFTON TULL, Rogers, Ark.	EA	36.5	0.0	39	2	1	1	5	11	23	0	0
406	448	VOCON, Cleveland, Ohio	A	36.3	0.0	100	0	0	0	0	0	0	0	0
407	320	LOCHMUELLER GROUP INC., Evansville, Ind. †	E	36.3	0.0	0	0	0	0	26	0	64	0	0
408	464	SEPI, Raleigh, N.C.	E	36.0	0.0	18	0	0	0	0	0	82	0	0
409	**	FSB ARCHITECTS + ENGINEERS, Oklahoma City, Okla.	AE	36.0	0.0	100	0	0	0	0	0	0	0	0
410	456	PLUMMER ASSOCIATES INC., Fort Worth, Texas	E	35.9	0.0	0	0	0	48	41	0	0	0	11
411	404	RJN GROUP INC., Wheaton, Ill.	E	35.9	0.0	0	0	0	4	96	0	0	0	0
412	361	CPH INC., Sanford, Fla.	EA	35.8	1.3	34	0	0	15	23	0	10	0	0
413	**	ROWE PROFESSIONAL SERVICES CO., Flint, Mich.	E	35.6	0.0	0	0	0	3	3	14	61	0	0
414	435	KENDALL/HEATON ASSOCIATES INC., Houston, Texas	A	35.5	0.0	100	0	0	0	0	0	0	0	0
415	424	MCCLURE ENGINEERING, Clive, Iowa	E	35.5	0.0	34	0	0	17	9	0	25	0	0
416	386	DEKKER/PERICH/SABATINI LTD., Albuquerque, N.M.	AE	35.5	0.0	100	0	0	0	0	0	0	0	0
417	421	CTLTHOMPSON INC., Centennial, Colo. †	E	35.4	0.0	25	3	0	1	0	0	4	0	0
418	402	KS ENGINEERS PC, Newark, N.J.	E	35.0	0.0	0	0	0	0	0	0	100	0	0
419	378	D&B ENGINEERS AND ARCHITECTS DPC, Woodbury, N.Y.	EA	34.9	0.0	0	0	0	33	44	0	9	14	0
420	365	BHDP ARCHITECTURE, Cincinnati, Ohio	A	34.8	0.0	81	19	0	0	0	0	0	0	0
421	451	HIGHLAND ASSOCIATES, New York, N.Y.	AE	34.6	0.0	30	3	0	0	0	9	0	0	47
422	465	MBH ARCHITECTS, Alameda, Calif.	A	33.9	4.6	100	0	0	0	0	0	0	0	0
423	453	JONES EDMUNDS & ASSOCIATES INC., Gainesville, Fla. †	E	33.7	0.0	5	0	0	23	44	0	22	0	0
424	420	WENDEL, Williamsville, N.Y. †	AE	33.5	0.0	39	1	0	3	6	0	10	0	0
425	418	REBEL DESIGN+GROUP, Marina Del Rey, Calif. †	A	33.2	16.5	100	0	0	0	0	0	0	0	0
426	459	MG ENGINEERING DPC, New York, N.Y.	E	33.1	0.0	100	0	0	0	0	0	0	0	0
427	445	DAHLIN GROUP ARCHITECTURE PLANNING, Pleasanton, Calif.	A	33.1	0.0	100	0	0	0	0	0	0	0	0
428	479	THERMALTECH ENGINEERING INC., Cincinnati, Ohio	E	33.0	0.0	6	63	0	0	0	31	0	0	0
429	398	WHITNEY BAILEY COX & MAGNANI LLC, Baltimore, Md.	EA	32.9	0.0	26	0	0	2	0	3	68	0	0
430	**	POWERS BROWN ARCHITECTURE, Houston, Texas	A	32.9	1.3	63	30	0	0	0	0	0	0	0
431	385	ERDMAN ANTHONY, Rochester, N.Y.	E	32.9	0.0	21	0	0	11	0	0	68	0	0
432	**	LJB INC., Miamisburg, Ohio	EA	32.8	0.0	30	3	0	5	0	9	23	0	0
433	409	GROUP 70 INTERNATIONAL INC. DBA G70, Honolulu, Hawaii	O	32.8	1.5	100	0	0	0	0	0	0	0	0
434	438	KAHLER SLATER, Milwaukee, Wis.	A	32.6	0.0	100	0	0	0	0	0	0	0	0
435	425	RRMM ARCHITECTS, Chesapeake, Va.	A	32.4	0.0	100	0	0	0	0	0	0	0	0
436	458	DONOHUE & ASSOCIATES INC., Sheboygan, Wis.	E	32.1	0.0	0	0	0	21	79	0	0	0	0
437	470	TOWERPINKSTER, Kalamazoo, Mich.	AE	32.1	0.0	97	2	0	0	0	2	0	0	0
438	**	THE GATEWAY ENGINEERS INC., Pittsburgh, Pa. †	E	32.0	0.0	35	0	0	6	19	26	3	0	0
439	450	TRAFFIC PLANNING AND DESIGN INC., Pottstown, Pa.	E	31.8	0.0	0	0	0	0	0	0	100	0	0
440	415	GBBN, Cincinnati, Ohio	A	31.8	3.7	100	0	0	0	0	0	0	0	0
441	454	MCMAHON ASSOCIATES INC., Neenah, Wis. †	AE	31.5	0.0	16	10	1	11	48	3	10	0	0
442	307	DAY & ZIMMERMANN, Philadelphia, Pa. †	AE	31.4	14.3	84	4	0	0	0	0	1	0	11
443	469	THE EADS GROUP INC., Altoona, Pa.	EA	31.4	0.0	5	0	0	12	22	22	25	0	0
444	461	DATTNER ARCHITECTS, New York, N.Y.	A	31.3	0.0	93	0	0	0	0	0	7	0	0
445	496	ARRAY ARCHITECTS, Conshohocken, Pa.	A	31.3	0.0	100	0	0	0	0	0	0	0	0
446	487	LORING CONSULTING ENGINEERS INC., New York, N.Y.	E	31.3	1.3	74	0	0	0	0	0	0	0	2
447	403	INTEGRUS ARCHITECTURE PS, Spokane, Wash.	AE	31.2	0.0	100	0	0	0	0	0	0	0	0
448	434	RDC-S111, Long Beach, Calif.	A	31.2	0.0	100	0	0	0	0	0	0	0	0
449	480	RTM ENGINEERING CONSULTANTS LLC, Schaumburg, Ill.	E	31.1	0.0	86	5	0	0	0	5	0	0	5
450	490	DUNHAM ASSOCIATES, Minneapolis, Minn.	E	31.1	0.0	100	0	0	0	0	0	0	0	0

#331

PS&S, celebrating its 60th anniversary, announced April 4th that it had acquired the assets of New York's B. Thayer Associates.

RANK 2022	RANK 2021	FIRM	FIRM TYPE	2021 REVENUE \$ MIL.		GENERAL BUILDING	MANUFACTURING	POWER	WATER SUPPLY	SEWER / WASTE	INDUS. / PETROLEUM	TRANSPORTATION	HAZARDOUS WASTE	TELECOM
				TOTAL	INT'L									
451	443	ALLIANCE, Minneapolis, Minn.	A	31.0	0.0	26	0	0	0	0	0	74	0	0
452	**	VEENSTRA & KIMM INC., West Des Moines, Iowa†	EA	30.9	0.0	0	0	0	14	42	0	39	0	0
453	449	STG DESIGN, Austin, Texas	A	30.8	0.0	100	0	0	0	0	0	0	0	0
454	452	FGM ARCHITECTS INC., Oak Brook, Ill.	A	30.5	0.0	100	0	0	0	0	0	0	0	0
455	382	WALLACE MONTGOMERY & ASSOCIATES LLP, Hunt Valley, Md.	E	30.4	0.0	0	0	0	15	2	0	83	0	0
456	440	E.L. ROBINSON ENGINEERING CO., Charleston, W.Va.†	E	30.4	0.0	0	0	0	12	12	5	69	0	0
457	447	STEWART, Raleigh, N.C.	E	30.1	0.0	80	0	0	0	10	0	10	0	0
458	**	PVE LLC, Sewickley, Pa.	EA	30.0	0.0	100	0	0	0	0	0	0	0	0
459	423	KSA ENGINEERS INC., Longview, Texas	EA	30.0	0.0	7	0	0	15	27	10	32	0	0
460	**	LAWRENCE GROUP, St. Louis, Mo.†	A	29.9	0.0	100	0	0	0	0	0	0	0	0
461	441	CDG INC., Andalusia, Ala.	E	29.7	0.0	9	0	2	6	10	59	12	0	0
462	467	GMB ARCHITECTURE + ENGINEERING, Holland, Mich.	AE	29.7	0.0	100	0	0	0	0	0	0	0	0
463	417	BETA GROUP INC., Lincoln, R.I.	E	29.6	0.0	0	0	0	6	24	0	55	0	0
464	460	FRENCH & PARRELO ASSOCIATES, Wall Township, N.J.	E	29.5	0.0	35	6	11	6	3	0	21	0	17
465	**	SCHMIDT ASSOCIATES, Indianapolis, Ind.	AE	29.2	0.0	100	0	0	0	0	0	0	0	0
466	468	BORTON-LAWSON, Wilkes-Barre, Pa.	AE	29.2	0.0	100	0	0	0	0	0	0	0	0
467	**	KZF DESIGN, Cincinnati, Ohio	AE	29.1	2.6	97	2	0	0	0	0	1	0	0
468	476	DOKKEN ENGINEERING, Folsom, Calif.	E	28.9	0.0	0	0	0	0	0	0	100	0	0
469	471	CSO, Indianapolis, Ind.	A	28.9	0.0	98	2	0	0	0	0	0	0	0
470	457	ESG ARCHITECTURE & DESIGN, Minneapolis, Minn.	A	28.7	0.0	100	0	0	0	0	0	0	0	0
471	478	RULE JOY TRAMMELL + RUBIO LLC, Atlanta, Ga.	A	28.6	0.0	100	0	0	0	0	0	0	0	0
472	429	LANIER & ASSOCIATES CONSULTING ENGINEERS INC., New Orleans, La.	E	28.4	0.0	0	0	0	0	0	0	100	0	0
473	475	LAMP RYNEARSON INC., Omaha, Neb.	E	28.4	0.0	0	0	1	4	10	3	3	0	0
474	**	BUILDING & EARTH SCIENCES INC., Birmingham, Ala.	GE	28.3	0.0	45	0	14	0	0	9	5	0	0
475	389	MUESER RUTLEDGE CONSULTING ENGINEERS PLLC, New York, N.Y.	E	28.3	0.0	27	12	14	12	13	12	9	0	0
476	485	LRK INC., Memphis, Tenn.	A	28.2	0.0	100	0	0	0	0	0	0	0	0
477	**	MASSA MULTIMEDIA ARCHITECTURE PC, Neptune, N.J.	A	28.1	0.0	100	0	0	0	0	0	0	0	0
478	**	ENVIRONMENTAL DESIGN AND RESEARCH (EDR), Syracuse, N.Y.†	E	27.9	0.0	0	0	75	5	20	0	0	0	0
479	444	SOUDER MILLER & ASSOCIATES, Albuquerque, N.M.†	EA	27.6	0.0	41	0	0	37	5	1	8	8	0
480	437	FXCOLLABORATIVE, Brooklyn, N.Y.	A	27.3	0.0	87	0	0	0	0	0	13	0	0
481	**	SB ARCHITECTS, San Francisco, Calif.†	A	26.8	5.2	0	0	0	0	0	0	0	0	0
482	**	CUBE 3, Lawrence, Mass.	A	26.8	0.0	100	0	0	0	0	0	0	0	0
483	**	FRANCIS CAUFFMAN ARCHITECTS, Philadelphia, Pa.	A	26.6	0.0	100	0	0	0	0	0	0	0	0
484	462	AHL, Honolulu, Hawaii	A	26.4	0.0	100	0	0	0	0	0	0	0	0
485	**	HASTINGS ARCHITECTURE LLC, Nashville, Tenn.	A	26.1	0.0	100	0	0	0	0	0	0	0	0
486	491	HUSSEY GAY BELL, Savannah, Ga.	EA	26.1	0.0	46	19	0	12	11	0	11	0	0
487	399	ARORA ENGINEERS INC., Chadds Ford, Pa.	E	26.0	0.0	4	0	0	0	0	0	96	0	0
488	**	TEECOM, Oakland, Calif.	E	25.9	1.4	45	6	0	0	0	2	1	0	44
489	482	R&M CONSULTANTS INC., Anchorage, Alaska	E	25.8	0.0	3	0	1	1	1	1	89	1	0
490	472	C&I ENGINEERING, Louisville, Ky.	E	25.6	0.0	0	15	1	0	0	84	0	0	0
491	486	QUATTROCCHI KWOK ARCHITECTS, Santa Rosa, Calif.	A	25.4	0.0	100	0	0	0	0	0	0	0	0
492	**	UNITED CONSULTING, Indianapolis, Ind.	E	25.3	0.0	0	0	0	4	10	0	85	0	0
493	436	VCBO ARCHITECTURE, Salt Lake City, Utah	A	25.2	0.0	100	0	0	0	0	0	0	0	0
494	**	FEHR GRAHAM - ENGINEERING & ENVIRONMENTAL, Rockford, Ill.	E	25.1	0.0	11	0	0	0	42	0	16	2	0
495	488	DEVCON CONSTRUCTION INC., Milpitas, Calif.	E	25.0	0.0	100	0	0	0	0	0	0	0	0
496	500	BSC GROUP, Boston, Mass.†	E	24.9	0.0	32	0	32	1	0	0	32	3	0
497	483	WDG ARCHITECTURE, Washington, D.C.†	A	24.7	0.0	100	0	0	0	0	0	0	0	0
498	**	SUPERIOR ENGINEERING LLC, Hammond, Ind.	E	24.7	0.0	3	0	4	0	0	93	0	0	0
499	**	PICKETT AND ASSOCIATES, INC., Tampa, Fla.	E	24.7	0.0	0	0	86	0	1	0	10	0	0
500	**	TAYLOR DESIGN, Irvine, Calif.	A	24.5	0.0	100	0	0	0	0	0	0	0	0

Where To Find the Top 500

FIRM	RANK	FIRM	RANK	FIRM	RANK	FIRM	RANK
A							
AECOM	2	CDG Inc.	461	EnSafe Inc.	243	Hazen and Sawyer	54
Affiliated Engineers Inc.	119	CDI Engineering Solutions	255	EUA (Eppstein Uhen Architects Inc.)	266	HBK Engineering LLC	166
AHL	484	CDM Smith	23	Erdman Anthony	431	HDR	5
AI Engineers Inc.	338	CESO Inc.	234	ESG Architecture & Design	470	HEAPY	346
AKF Group	283	CHA Consulting Inc. (CHA)	61	ESP Associates Inc.	258	Henderson Engineers Inc.	129
AKRF Inc.	244	Civil & Environmental Consultants Inc.	101	David Evans Enterprises Inc.	99	Herbert Rowland & Grubic Inc.	360
AlfaTech Consulting Engineers Inc.	276	Clark Nexsen	202	EwingCole	194	HGA	116
Alliance	451	CMTA Inc.	177	EXP	26	Highland Associates	421
American Structurepoint	134	CO Architects	268	Exyte Americas Holding Inc.	364	Hillis-Carnes Engineering Associates Inc.	329
Anvil Corp.	254	Cobb Fendley & Associates Inc.	184	EYP Architecture & Engineering	148	HKS	43
Arcadis North America/Callison RTKL	14	Coffman Engineers Inc.	157	F			
AO Architects	192	Colliers Engineering & Design	85	Farnsworth Group Inc.	220	HLW	304
Ardurra Group Inc.	114	Collins Engineers Inc.	308	Francis Cauffman Architects	483	HMC Architects	208
ARM Group Enterprises Inc.	350	Congruex	146	Fehr & Peers	264	HNTB Cos.	11
Arora Engineers Inc.	487	CONSOR Engineers	76	Fehr Graham - Engineering & Environmental	494	HOK	41
Array Architects	445	Cooper Carry	233	Fentress Architects	388	Hord Coplan Macht	217
Arup	38	Core States Group	230	FFKR Architects	368	Houston Engineering Inc.	373
ATCS PLC	345	Corgan	94	FGM Architects Inc.	454	Hubbell Roth & Clark Inc.	367
Atwell LLC	81	COWI North America	198	Fishbeck	190	Huckabee	212
Ayers Saint Gross	311	CPH Inc.	412	Flad Architects	142	Huitt-Zollars Inc.	160
Ayres	318	CPL	256	Fluor	3	Humphreys & Partners Architects	305
B							
Michael Baker International	28	Crafton Tull	405	Foth	68	Hunt Guillot & Associates LLC	309
Bala Consulting Engineers	344	Crawford Murphy & Tilly Inc.	219	FSB Architects + Engineers	409	Hussey Gay Bell	486
Ballinger	235	CRB	67	Freese and Nichols Inc.	104	I	
Barge Design Solutions	171	CSO	469	French & Parrello Associates	464	IBI Group Inc.	39
Barr Engineering Co.	106	Cushing Terrell	218	Fugro USA	66	IMEG Corp.	71
Barry-Wehmiller Design Group	90	CTL Engineering Inc.	397	Fuss & O'Neill Inc.	328	Infrastructure Consulting & Engineering PLLC	216
Bartlett & West Inc.	295	CTLThompson Inc.	417	FXCollaborative	480	Integral Group	199
Barton & Loguidice DPC	285	CUBE 3	482	G			
Baxter & Woodman Inc.	267	Cunningham	274	Group 70 International Inc. dba G70	433	Integrus Architecture PS	447
BCC Engineering Inc.	215	D		GAI Consultants Inc.	145	Intertek-PSI	22
Beam Longest & Neff	154	D&B Engineers and Architects DPC	419	Galloway & Co. Inc.	390	IPS-Integrated Project Services LLC	89
Bechtel	25	D'Amato Conversano Inc. dba DCI Engineers	307	Gannett Fleming	29	ISG	250
The Beck Group	358	Dahlin Group Architecture Planning	427	Garver	102	J	
Alfred Benesch & Co.	100	LEO A DALY	168	The Gateway Engineers Inc.	438	J-U-B Engineers Inc.	240
BETA Group Inc.	463	DE Corp.	339	GBA (George Butler Associates)	293	Jacobs	1
BGE Inc.	105	Dattner Architects	444	GBBN	440	Jaros Baum & Bolles	263
BHDP Architecture	420	Davis Partnership Architects	337	GEI Consultants Inc.	93	JCJ Architecture	402
BKF Engineers	156	Day & Zimmermann	442	Genesis AEC	248	Jensen Hughes	80
BL Cos. Inc.	155	DCCM	174	Gensler	13	JLG Architects	399
Black & Veatch	16	Degenkolb Engineers	321	Geo-Logic Associates Inc.	253	Johnson Mirmiran & Thompson Inc. (JMT)	60
Bohannon Huston Inc.	362	Dekker/Perich/Sabatini Ltd.	416	Geocon	326	Jones Edmunds & Associates Inc.	423
Bolton & Menk Inc.	132	Dennis Group	180	GeoEngineers Inc.	222	Jordan & Skala Engineers	349
Borton-Lawson	466	DeSimone Consulting Engineers	296	Geosyntec Consultants	40	K	
Boswell Engineering Inc.	374	Devcon Construction Inc.	495	GFF Inc.	404	Kahler Slater	434
Bowman Consulting Group	118	Dewberry	36	Ghafari Associates LLC	153	Kapur & Associates Inc.	356
Braun Intertec Corp.	108	DGA planning architecture interiors	196	GHD Inc.	27	KCI Technologies Inc.	48
Bridgefarmer & Associates Inc.	401	WK Dickson & Co. Inc.	398	GMB Architecture + Engineering	462	Kendall/Heaton Associates Inc.	414
Brown and Caldwell	37	DLR Group	72	Goodwyn Mills and Cawood Inc.	193	Kennedy/Jenks Consultants Inc.	223
BRPH Cos. Inc.	257	DLZ Corp.	141	GPD Group	152	Kier & Wright	327
BSA LifeStructures	353	Dokken Engineering	468	GRAEF	369	Kiewit Corp.	18
BSC Group	496	Donohue & Associates Inc.	436	Greeley and Hansen	201	Kirkey Architects Inc.	375
BSI Engineering	314	DOWL	204	HR Green Inc.	162	Kisinger Campo & Associates Corp.	299
Building & Earth Sciences Inc.	474	Draper Aden Associates Inc.	315	Greenman-Pedersen Inc. (GPI)	70	Kleinfelder	45
Burgess & Niple Inc.	205	DRMP Inc.	228	Gresham Smith	84	KLJ	207
The Burke Group Ltd.	163	Dunham Associates	450	GZA	130	Kohn Pedersen Fox Associates PC	111
Burns & McDonnell	8	E		H			
Burns Engineering Inc.	241	E4H Environments for Health Architecture	282	H2M architects + engineers	209	KPF Consulting Engineers	86
Burrow Global LLC	298	EA Engineering Science and Tech. Inc.	133	Haley & Aldrich Inc.	110	Krazan & Associates	379
BWBR	372	The EADS Group Inc.	443	Half Associates Inc.	97	KS Engineers PC	418
C							
C&J Engineering	490	Engineering Consulting Services (ECS)	64	Hanson Professional Services Inc.	169	KSA Engineers Inc.	459
CannonDesign	53	Environmental Design and Research (EDR)	478	Hardesty & Hanover LLC	150	KTGY Architecture + Planning	185
Cardno Inc.	79	Electrical Consultants Inc.	149	Hargrove Engineers + Constructors	57	KZF Design	467
Carollo Engineers Inc.	56	Elkus Manfredi Architects	181	HED	203	L	
D							
E							
F							
G							
H							
I							
J							
K							
L							
M							
N							
O							
P							
Q							
R							
S							
T							
U							
V							
W							
X							
Y							
Z							

2022 Top 500 Design Firms – Subsidiaries by Rank

Rank Company *Subsidiary*

1 Jacobs
All Jacobs subsidiaries related to Jacobs Engineering Group Inc.

3 Fluor
*Fluor Constructors International Inc.
 Fluor Enterprises Inc.*

5 HDR
*HDR Architects Associates, Inc.
 HDR Architecture, Inc.
 HDR China Co. Ltd.
 HDR Construction Control Corp.
 HDR Consulting Limited
 HDR Corp.
 HDR Corp. Pty. Ltd.
 HDR Engineering, Inc.
 HDR Environmental, Operations and Construction
 HDR GmbH
 HDR Middle East LLC
 HDR Security Operations Inc.*

8 Burns & McDonnell
*AZCO
 Ref-Chem*

9 Stantec Inc.
*Stantec Architecture Inc.
 Stantec Consulting Michigan Inc.
 Stantec Consulting Services Inc.
 Stantec Energy and Resources Inc.
 Stantec Planning and Landscape Architecture P.C.*

12 Worley
Advisian

Rank Company *Subsidiary*

*IntecSea
 JESA
 Worley Field Services
 Worley International*

15 Parsons Corp.
*Parsons Environment & Infrastructure
 Parsons Government Services
 Parsons Transportation*

16 Black & Veatch
*Black & Veatch Construction, Inc.
 Black & Veatch Corporation
 Black & Veatch International
 Black & Veatch LTD of Michigan
 Black & Veatch Management Consulting, LLC
 Black & Veatch New York LLP
 Black & Veatch Special Projects Corp
 Overland Contracting, Inc.*

18 Kiewit Corp.
*Cherne Contracting Corporation
 Construction Kiewit Cie
 Ganotec Inc.
 Kiewit Building Group Inc.
 Kiewit Canada Group Inc
 Kiewit Engineering Group Inc
 Kiewit Foundations Co.
 Kiewit Infrastructure Co.
 Kiewit Infrastructure South Co.
 Kiewit Infrastructure West Co.
 Kiewit Offshore Services Ltd.
 Kiewit Power Constructors Co.
 Kiewit Water Facilities South Co.
 Mass. Electric Construction Co.
 Peter Kiewit Sons ULC
 T.E. Ibberson Company
 TIC - The Industrial Company*

2022 Top 500 Design Firms – Subsidiaries by Rank

Rank Company Subsidiary

20 SNC-Lavalin Inc.

Atkins Energy Federal EPC, Inc.
Atkins Energy Global Solutions LLC
Atkins Nuclear Secured, LLC
Data Transfer Solutions
FAITHFUL + GOULD, LLC
Isotek Systems, LLC
SNC - LAVALIN ENGINEERS & CONSTRUCTORS INC. US
SNC-LAVALIN CONSTRUCTORS INC.
SNC-LAVALIN MAJOR PROJECTS (ONTARIO) INC.
SNC-LAVALIN PROJECT SERVICES INC.
The Atkins North America Holdings Corporation
US Energy JVs

21 Terracon Consultants Inc.

Argus Pacific, Inc.
Building Exterior Solutions, Inc.
Burleson Consulting, Inc.
CHJ Consultants, Inc.
Dunkelberger Engineering and Testing, Inc.
Earth Exploration, Inc.
Environmental Planning Group, LLC
Environmental Services, Inc.
GET Solutions, Inc.
GeoCapitol Engineering, LLC
GeoConcepts Engineering, Inc.
Geotechnical & Environmental Consultants, Inc.
Mayes Testing Engineers, Inc.
NORCAL Geophysical Consultants, Inc.
Neil O. Anderson and Associates, Inc.
Pivvot, Inc.
RGA Environmental, Inc.
Skelly and Loy, Inc.
Sport Environmental Services, LLC
St. John-Mittelhauser & Associates, Incorporated
TAM Consultants, Inc.
Terracon Consultants - MI, Inc.

Rank Company Subsidiary

Terracon Consultants – NY, Inc.

22 Intertek-PSI

Intertek
Intertek-MT Group
Intertek-PSI

23 CDM Smith

CDM Constructors Inc
CDM Federal Programs
The Louis Perry Group

24 NV5 Global Inc.

AT Advance Technologies Asia Pacific Pte. Ltd.
Aero-Metric Holdings Corp
Alta Environmental, LP
Bock & Clark Corporation
CHI Engineering Services Inc.
CivilSource, Inc.
Dade Moeller & Associates
Energenz Consulting LLC
Energenz Consulting LTD
GeoDesign, Inc
Geodynamics, LLC
Geospatial Holdings, Inc.
Hanna Engineering
Holdrege & Kull Consulting Engineers & Geologists
IDA Engineering Private Limited (India)
Industrial Design Associates International (Hong Kong) Limited
Industrial Design Associates International PTE LTD
JBA Consulting Engineers
JBA Consulting Engineers (Asia) Limited
JBA Consulting Engineers (Asia) Limited
Marron & Associates
Mediatech FZ, LLC
Optimal Energy, LLC
PES Environmental
Quantum Spatial Canada

2022 Top 500 Design Firms – Subsidiaries by Rank

Rank Company Subsidiary

Quantum Spatial India Private Limited
Quantum Spatial, Inc.
Richard D. Kimball Company
Sage Renewable Energy Consulting
Sebesta, Inc.
The Sextant Group, Inc.
WHPacific, Inc.

25 Bechtel

BNT International Company
Bechtel Construction Operation, Inc.
Bechtel Corporation
Bechtel Global Energy Inc.
Bechtel Global Infrastructure & Minerals Inc.
Bechtel India Private Ltd.
Bechtel Nuclear, Security & Environmental, Inc.

27 GHD Inc.

GHD Consultants Ltée
GHD Consulting Services Inc.
GHD Engineering Group Inc.
GHD Limited
GHD S.A
GHD Services Inc.

28 Michael Baker International

Baker LPA Architects, PC
JMA Architects, LLC
JMA Nevada Architects, PC
Michael Baker Engineering, Inc
Michael Baker International Architects, PC
Michael Baker International Holdco Corporation
Michael Baker International, Inc

30 Mott MacDonald

Mott MacDonald Alabama, LLC
Mott MacDonald Florida, LLC
Mott MacDonald Group, Inc.
Mott MacDonald I&E, LLC

Rank Company Subsidiary

Mott MacDonald Ltd.
Mott MacDonald NY Inc.
Mott MacDonald Operating Services LLC
Mott MacDonald, LLC

31 T.Y. Lin International

Bon Vietnam Joint Venture Company Limited
C.Y.L Engineering Consulting Inc.
GPO Group, S.A.
IDEAM, S.A.
P.T. Konsultant T.Y. Lin International
Robert Silman Associates PLLC
Robert Silman Associates Structural Engineers, D.P.C.
SMA Bersekutu Sdn. Bhd.
Sam Schwartz Consulting, LLC
T.Y. Lin International
T.Y. Lin International Canada, Inc.
T.Y. Lin International Engineering & Architecture, P.C.
T.Y. Lin International Engineering Consulting (China) Co., Ltd.
T.Y. Lin International Pte. Ltd.
T.Y. Lin International Sdn. Bhd.
T.Y. Lin International Taiwan Consulting Engineers, Inc.
T.Y. Lin International Vietnam Co., Ltd.
T.Y. Lin Panama, S.A.
The Municipal Infrastructure Group Ltd. (TMIG)

33 Perkins&Will

Nelson\Nygaard Consulting
Pierre-Yves Rochon
Pierre-Yves Rochon
Portland
Schmidt Hammer Lassen

34 Sargent & Lundy

Sargent & Lundy Engineering Services, Inc.
Sargent & Lundy Engineers, Ltd.

2022 Top 500 Design Firms – Subsidiaries by Rank

Rank Company Subsidiary
Sargent & Lundy, L.L.C.

35 STV Group Inc.

CP&Y
STV Architects
STV Construction Inc.
STV Energy Services, Inc.
STV Incorporated

36 Dewberry

Dewberry Architects Inc.
Dewberry Design-Builders Inc.
Dewberry Engineers Inc.

37 Brown and Caldwell

Brown and Caldwell Constructors
Brown and Caldwell Consultants Canada

38 Arup

Arup Canada Inc
Arup Texas Inc
Arup US, Inc

40 Geosyntec Consultants

Enviro Group Limited, Inc.
Geosyntec Consultants International, Inc.
Geosyntec Consultants Pty. Ltd.
Geosyntec Consultants, Ltd.
MEC Water Resources, Inc.

42 Universal Engineering Sciences

Alpha Testing, Inc.
Construction Testing & Engineering, Inc.
Contour Engineering
GEOservices, LLC
GFA International
GSI Engineering
Geotechnology Inc.

Rank Company Subsidiary

McGinley & Associates
NOVA Geotechnical & Inspection Services
SUMMIT Engineering, Laboratory & Testing,
P.C.
Universal Engineering Sciences
Wallace-Kuhl & Associates

44 S&B Engineers and Constructors Ltd.

Bibb Engineers, Architects, & Constructors LLC
Ford, Bacon & Davis, LLC
S&B Engineers and Constructors, Ltd.
S&B Fabrication Services, Ltd
S&B Group International, Ltd.
S&B Infrastructure Construction, Ltd.
S&B Infrastructure Engineering, Ltd.
S&B Infrastructure Private, Ltd.
S&B Infrastructure Private, Ltd.
S&B Northeast Operations, Ltd.
S&B Pipeline Division, Ltd.
S&B Plant Services, Ltd.
TAI Engineers LLC

45 Kleinfelder

CMWorks, Inc.
Century Engineers, LLC
Design Engineers, Inc.
Gas Transmission Systems, Inc.
Industrial Fluid Management, Inc.
Kleinfelder Australia Pty
Kleinfelder Canada, Inc.
Kleinfelder Construction Services
Kleinfelder Northeast, Inc.
Kleinfelder Southeast, Inc.
Kleinfelder, Inc.
Poggemeyer Design Group, Inc.
The Kleinfelder Group, Inc.

47 LANGAN

Langan CT, Inc
Langan Engineering and Environmental
Services, INC

2022 Top 500 Design Firms – Subsidiaries by Rank

Rank Company Subsidiary

Langan Engineering, Environmental,
Surveying and Landscape Architecture, DPC SA
Langan International UK, LTD
Langan International, LLC
Langan MI, Inc.

48 KCI Technologies Inc.

KCI Communications Infrastructure
KCI Environmental Technologies and
Construction

49 RS&H Inc.

RS&H Architects-Engineers-Planners, Inc.
RS&H Commercial Realty, Inc.
RS&H Michigan, Inc.

51 Woolpert Inc.

AAM
CivilTech Engineering
Data Cloud Solutions
Jviation
Optimal Geo
Southern Mapping Company
Woolpert Canada
eTrac

52 Skidmore Owings & Merrill

SOM (Europe) LLP
SOM Architectural Consulting (Shanghai) Co.
Ltd.
SOM LLP

55 LJA Engineering

Berg Oliver
Horizon Environmental
LJA Rail
LJA Surveying

Rank Company Subsidiary

57 Hargrove Engineers + Constructors

Hargrove Controls + Automation
Hargrove Life Sciences
Tormod

58 EN Engineering LLC

CNA LLC
ESC Engineering
Energy Initiatives Group LLC
G2 Integrated Solutions LLC
Kestrel Power Engineering LLC
Kestrel Power Engineering Ltd
QC Data LLC
Spectrum Engineering LLC
Texas Utility Engineering LLC

59 SCS Engineers

SCS Energy
SCS Engineers
SCS Field Services

60 Johnson Mirmiran & Thompson Inc.

JMT of New York, Inc
Vaughn & Melton

61 CHA Consulting Inc. (CHA)

A&P Engineers (acquired in February 2022)
American Fire
CHA Integrated Solutions

64 Engineering Consulting Services (ECS)

ECS Capitol Services, PLLC
ECS Corporate Services
ECS Florida, LLC
ECS Mid-Atlantic, LLC
ECS Midwest, LLC
ECS Southeast, LLP

2022 Top 500 Design Firms – Subsidiaries by Rank

Rank Company Subsidiary
ECS Southwest, LLP

66 Fugro USA

Fugro USA Land, Inc.
Fugro USA Marine, Inc.

68 Foth

Foth Infrastructure & Environment, LLC
Foth Production Solutions

69 Perkins Eastman

BFJ Planning
RGR Landscape
Urbanomics

70 Greenman-Pedersen Inc. (GPI)

UESI

76 CONSOR Engineers

Civic Engineering & Information Technology, LLC
Conсор Engineering & Land Surveying - NY, PC
Murraysmith, Inc

77 TranSystems

L.R. Kimball
OMEGA & Associates

78 Salas O'Brien

BVH Integrated Services
PCI
SIA Solutions
Stephenson Engineering

81 Atwell LLC

RVi Planning and Landscape Architecture

Rank Company Subsidiary

Strategic Construction Solutions, Inc.

82 Moffatt & Nichol

Moffatt & Nichol Information Systems
Moffatt & Nichol, Baltics
Moffatt & Nichol, Brazil
Moffatt & Nichol, Chile
Moffatt & Nichol, Columbia
Moffatt & Nichol, London
Moffatt & Nichol, Panama

87 Page

Page Southerland Page, International, LLC
age Southerland Page, International, Inc.
age Southerland Page, Mexico

89 IPS-Integrated Project Services LLC

IPS BioEngineering Technology (Shanghai) Co., Ltd
IPS BioPharmaceutical Technology Consulting (Tianjin) LLC
IPS International Private Ltd.
IPS-Integrated Project Services (Germany) GmbH
IPS-Integrated Project Services (Ireland) Limited
IPS-Integrated Project Services GmbH
IPS-Integrated Project Services Limited
IPS-Integrated Project Services Pte. Ltd.
IPS-Integrated Project Services, ULC
IPS-Mehtalia Pvt. Ltd.
IPS-Serviços de Projetos Integrados Ltda.
Linesight
The Cardinal Group USA, LLC

92 ENERCON

Enercon Federal Services

2022 Top 500 Design Firms – Subsidiaries by Rank

Rank Company *Subsidiary*

98 Stanley Consultants

*SCEPSC
SCIPL*

99 David Evans Enterprises Inc.

*Disaster and Emergency Management Services
International, LLC
Flux Resources, LLC
Motus Collaborative, LLC*

103 SAM LLC

SAM - Construction Services, LLC

108 Braun Intertec Corp.

*Braun Intertec
Edwards-Pitman Environmental, Inc.
GME Consulting Services, Inc*

110 Haley & Aldrich Inc.

*H&A OF NEW YORK LLP
HALEY & ALDRICH CONSTRUCTION SERVICES
HALEY & ALDRICH OF MICHIGAN, INC
HART CROWSER, A DIVISION OF HALEY &
ALDRICH*

113 Merrick & Co.

*Merrick & Company UK, Ltd.
Merrick Canada, ULC
Merrick Mexico*

114 Ardurra Group Inc.

*Ardurra Group New York
Ardurra Group North Carolina
PCA Australia*

Rank Company *Subsidiary*

124 Ulteig Engineers Inc.

Next Level SCADA

128 Morrison Hershfield

*Morrison Hershfield Corporation
Morrison Hershfield Geomatics
Morrison Hershfield International Inc.
Morrison Hershfield Limited
Morrison Hershfield Managers Inc.*

129 Henderson Engineers Inc.

*HNY Consulting Engineers
Henderson Building Solutions
Henderson Engineers*

130 GZA

*AirLogics, LLC
GZA GeoEnvironmental, Inc.
Goldberg-Zoino Associates of New York, P.C.
d/b/a GZA GeoEnvironmental of New York*

131 Weston & Sampson

*SB Church, Inc.
W&S of North Carolina, Inc.
Weston & Sampson Architects, Inc.
Weston & Sampson CMR, Inc.
Weston & Sampson Engineers, Inc.
Weston & Sampson Engineers, PC
Weston & Sampson Land Surveyors, Inc.
Weston & Sampson PE, LS, LA, PC
Weston & Sampson Services, Inc.*

132 Bolton & Menk Inc.

*DBA ColeJenest & Stone
DBA DDC Engineers*

2022 Top 500 Design Firms – Subsidiaries by Rank

Rank Company Subsidiary

135 LaBella Associates D.P.C.

*Aztech Environmental Technologies
LaBella Engineering, SLU
LaBella Environmental LLC
The Chazen Companies*

136 NORR

*CION COULTER Corporation
NORR Architects & Engineers Ltd.
NORR Architects, Engineers, Planners
NORR Associates Inc.
NORR Consultants Limited
NORR Design Inc.
NORR Inc.
NORR LLC
NORR Limited*

141 DLZ Corp.

*DLZ American Drilling, Inc.
DLZ Carbon, Inc.
DLZ Illinois, Inc.
DLZ Indiana, LLC
DLZ Industrial Surveying, Inc.
DLZ Industrial, LLC
DLZ Kentucky, Inc.
DLZ Michigan, Inc.
DLZ National, Inc.
DLZ Ohio, Inc.
DLZ Pennsylvania, LLC
DLZ Wisconsin, LLC*

142 Flad Architects

*Flad Architects
Flad Architects
Flad Architects
Flad Architects
Flad Architects
Flad Architects
Flad Architects
Flad Architects*

Rank Company Subsidiary

145 GAI Consultants Inc.

*GAI Consultants - NC, Inc.
GAI Consultants of Michigan, PLC
GAI Engineering & Surveying Consultants of
New York, PC
Lotspeich | Associates, Inc.
Real Estate Research Consultants, Inc
Systems Planning Corporation*

146 Congruex

*A&M Communications Company LLC
CHC Consulting LLC
Congruex SpliceCo LLC
Gudenkauf LLC
HHS Construction, LLC
Matrix Engineering LLC
Ohio Valley Excavating LLC
Southeast Utilities of Georgia LLC
Terra Technologies LLC
True North Management Services LLC
WhiteCo LLC*

149 Electrical Consultants Inc.

EPC Services Company

154 Beam Longest & Neff

*Beam, Longest & Neff, LLC
McIntosh Perry*

157 Coffman Engineers Inc.

*Coffman Engineers, Inc
Coffman Engineers, Inc
Coffman Engineers, Inc
Coffman Engineers, Inc
Coffman Engineers, Inc
Coffman Engineers, Inc
Coffman Engineers, Inc
Coffman Engineers, Inc
Coffman Engineers, Inc*

2022 Top 500 Design Firms – Subsidiaries by Rank

Rank Company Subsidiary

Coffman Engineers, Inc
Coffman Engineers, Inc
Coffman Engineers, Inc

161 Syska Hennessy Group

Syska Hennessy Group China Inc.
Syska Hennessy Group Inc.
Syska Hennessy Group Middle East LLC

163 The Burke Group Ltd.

Burke LLC
Christopher B Burke Engineering, Ltd.
Christopher B. Burke Engineering LLC
Emerald Site Services
KLOA
LAWR
Mackie Consultanats, LLC
SPACECO, Inc.
Thomson Surveying, Ltd.

165 Raba Kistner Inc.

Drake Environmental LLC
Project Control of Texas, Inc.
Raba Ingenieros
Raba Kistner, Inc.
Rice and Gardner, Inc.

171 Barge Design Solutions

Gould Turner Group
ResourceTek

174 DCCM

Binkley & Barfield
Coastland Civil Engineers
R. G. Miller
Rochester & Associates

Rank Company Subsidiary

175 Haskell

Benham
Dysruptek
Seiberling

179 Wade Trim

Wade Trim Associates, Inc.
Wade Trim NY, PC
Wade Trim, Inc. (Florida)
Wade Trim, Inc. (Michigan)
Wade Trim, Inc. (Ohio)

180 Dennis Group

Dennis Brasil Engenharia Ltda
Dennis Group Canada Inc.
Dennis Group International, Unipessoal Lda
IFAB Engineering Partners Ltd
Tech4Food Engineering & Innovation Lda
The Dennis Engineering Group, LLC
The Dennis Group, Inc.

182 RMA Group

Coating Specialists (CSI)
Enviro Drill
RMA GeoScience
RMA Group, Inc
SiteScan Subsurface Imaging
Western Technologies

188 Zachry Group

JV Industrial
Zachry Engineering Corporation
Zachry Nuclear Engineering

189 Schnabel Engineering

Schnabel Engineering West, Inc.
Schnabel Engineering, LLC

2022 Top 500 Design Firms – Subsidiaries by Rank

Rank Company Subsidiary

191 United Engineers & Constructors Inc.

Imperia Engineering Partners LLC

195 Verdantas

*Alden Labs
Duffield Associates
GeoInsight
HSW
Hull & Associates*

197 Neel-Schaffer Inc.

*Maptech, Inc.
True North Emergency Management*

201 Greeley and Hansen

*Greeley and Hansen Architects LLC
Greeley and Hansen Colombia S.A.S
Greeley and Hansen Ecuador CIA LTDA
Greeley and Hansen Michigan LLC*

202 Clark Nexsen

Clark Nexsen Construction Services

209 H2M architects + engineers

*H2M Architects & Engineers
H2M Associates
H2M architects + engineers*

215 BCC Engineering Inc.

*Heath and Lineback Engineers, Inc.
O&M Consulting, Inc.*

221 The Yates Cos. Inc.

*American Industrial Construction LLC
Blaine Construction Corporation
Edwards Electric Service LLC*

Rank Company Subsidiary

JESCO, Inc.

Merit Electrical Inc.

Superior Asphalt Inc

W.G. Yates & Sons Construction Company

Yates Constructors LLC

Yates Engineers LLC

Yates Services LLC

226 McCormick Taylor Inc.

McCormick Taylor, Inc.

230 Core States Group

*Bernardon LLC
CoreStates Construction Services, Inc.
CoreStates, Inc.
Integrated Image, Inc.*

231 Network Connex

*Advantage Engineers LLC
CCSI Networks LLC
Fairhaven LLC
Nat Tech LLC
Vertical Communications LLC*

232 Shive-Hattery

*Epoch
Studio951*

240 J-U-B ENGINEERS Inc.

*Gateway Mapping, Inc.
The Langdon Group*

246 Otak Inc.

K2 Consultancy Group

250 ISG

ISG Delivers, LLC

2022 Top 500 Design Firms – Subsidiaries by Rank

Rank Company Subsidiary
ISG Field Services, LLC

251 The S/L/A/M Collaborative
Construction Services of Somerset, Inc.
S/L/A/M Architects, Landscape Architects & Engineers, P.C.

253 Geo-Logic Associates Inc.
Clear Creek Associates, LLC
Daniel B. Stephens & Associates, Inc.
Geo-Logic Associates, Inc.
Geo-Logic Peru, SRL
Kunkel Engineering Group
RMC
The MINES Group

254 Anvil Corp.
Doyon Anvil
Redi Anvil

257 BRPH Cos. Inc.
BRPH Architects Engineers, Inc.
BRPH Construction Services, Inc.
BRPH Mission Solutions, Inc.

258 ESP Associates Inc.
Vickrey & Associates, LLC

261 PRIME AE Group Inc.
Braun & Steidl Architects, Inc.
Gulf Coast Architectural Group, Inc.
Integrated Engineering, LLC
KB Engineering, PC
KB Group of New York, Inc.
PRIME AE Group, Inc.
PRIME Construction Management & Survey, Inc.
PRIME Corporate Services, Inc.

Rank Company Subsidiary
Penza Bailey Architects, Inc.

267 Baxter & Woodman Inc.
B&W Natural Resources, LLC
Baxter & Woodman Costa Rica, LLC
Baxter Boller Design Build, LLC
Concentric Integration LLC

269 T&M Associates
East Coast Drilling, Inc.

273 Hart Howerton
Hart Howerton Ltd
Hart Howerton Partners
Telegraph Hill Acquisition

279 TKDA
Cedar Street Architecture

280 Wold Architects and Engineers
Wold Architects and Engineers

285 Barton & Loguidice D.P.C.
Barton & Loguidice Engineers, PLLC
Barton & Loguidice Environmental Engineering & Geology, PLLC
Barton & Loguidice, Inc.
Barton & Loguidice, LLC

287 SYSTRA USA
SYSTRA IBT

293 GBA (George Butler Associates)
GBA
GBA Builders

2022 Top 500 Design Firms – Subsidiaries by Rank

Rank Company Subsidiary

- 295 Bartlett & West Inc.**
BW Construction, LLC
BW Operations, LLC
BW/Corman Technology, LLC - 50%
Civil Associates, Inc
West Dakota Water, LLC - 12%
- 298 Burrow Global LLC**
Burrow Global Construction, LLC
Burrow Global Services, LLC
- 300 RCM Technologies Inc.**
PSR Engineering Solutions d.o.o. Beograd
RCM Technologies (USA), Inc.
RCM Technologies Canada Corp.
- 301 ME Engineers**
M-E Engineers Limited
ME/Vogle Taylor Engineers
- 305 Humphreys & Partners Architects**
Atticus Real Estate
Figoten, S.A.
HP Civil Engineering
HPA Design Group
HPLA Studio
- 310 Martin/Martin Inc.**
Martin/Martin Inc Wyoming
- 315 Draper Aden Associates Inc.**
DAA
- 322 England-Thims & Miller Inc.**
ETM Surveying & Mapping, Inc.

Rank Company Subsidiary

- 325 Manhard Consulting Ltd**
Manhard Dallas, LLC
Manhard.Tx LLC
- 330 RETTEW Associates Inc.**
RETTEW Engineering & Surveying, P.C.
- 346 HEAPY**
HEAPY Solutions
Heapy Engineering Indiana LLC
- 348 LHB Inc.**
LHB, LLC
- 350 ARM Group Enterprises Inc.**
ARM EnerTech
CAMCO
- 352 I. C. Thomasson Associates Inc.**
I. C. Thomasson Associates, Inc.
- 364 Exyte Americas Holding Inc.**
Exyte U.S., Inc.
Total Facility Solutions, Inc.
- 366 The Vertex Cos. Inc.**
Compass Project Management, Inc.
Lockwood, Kessler & Bartlett
Optistar Technology Consultants
VTX Consulting Services Inc.
Vertex Ingenieros Consultores
- 370 V3 Cos.**
V3 Companies of Canada, Ltd.
V3 Companies, Ltd.

2022 Top 500 Design Firms – Subsidiaries by Rank

Rank Company Subsidiary

380 Landrum & Brown Inc.

KBJ Architects, LLC
KBJ-L&B Architects, LLC
L&B Architecture, LLC
L&B China, LLC
L&B Transportation Technology Consultancy (Shanghai) Co., Ltd.
L&B Worldwide Australia PTY LTD
Landrum & Brown UK Limited
Landrum & Brown Worldwide Services, LLC
Trillion Av, LLC

381 SGA

SGA

382 The LiRo Group

DiGiorgio Associates, Inc
James LaSala & Associates, LLP
LiRo Architects + Planners, PC
LiRo Engineers, Inc
LiRo GIS, Inc
LiRo Program and Construction Management PE, PC

383 Milhouse Engineering & Construction Inc.

Milhouse Construction
Milhouse Snow

386 Leighton Group Inc.

Leighton Consulting, Inc.
Leighton and Associates, Inc.

395 Sheehan Nagle Hartray Architects

Sheehan Nagle Hartray Associates, Limited

Rank Company Subsidiary

397 CTL Engineering Inc.

Industrial Communication and Sound Vector Engineers

400 The Osborn Engineering Co.

OSPORTS

407 Lochmueller Group Inc.

Velis, Inc.

417 CTL|Thompson Inc.

CTL|Thompson Materials Engineers, Inc.

423 Jones Edmunds & Associates Inc.

JEACES

424 Wendel

Wendel Architectural Resources, Inc.
Wendel Construction, Inc.
Wendel Consulting Services, LLC
Wendel Energy Services, LLC
Wendel Engineering Resources, Inc.
Wendel Engineering, PC
Wendel WD Architecture, Engineering, Surveying & Landscape Architecture, PC

425 Rebel Design+Group

REBEL BRANDING
REBEL MEDIA
REBEL PROCUR

438 The Gateway Engineers Inc.

Gateway Engineers

2022 Top 500 Design Firms – Subsidiaries by Rank

Rank Company Subsidiary

441 **McMahon Associates Inc.**

*Integrated Public Resources
McMahon, Inc.*

442 **Day & Zimmermann**

*D&Z of Canada Corporation
Day & Zimmermann International, Inc
Day & Zimmermann Management Services, Inc.
Day & Zimmermann NPS, Inc.
The Atlantic Group, Inc. - dba DZ Atlantic*

452 **Veenstra & Kimm Inc.**

Calhoun-Burns & Associates, Inc.

456 **E.L. Robinson Engineering Co.**

EL ROBINSON ENGINEERING OF OHIO CO

460 **Lawrence Group**

*Integrate Construction Partners
Lawrence Group
Niche Home Furnishings*

478 **Environmental Design and Research (EDR)**

EDR

479 **Souder Miller & Associates**

*SMA Operations, LLC
Vigil Enterprises, Inc.*

481 **SB Architects**

SB Architects

496 **BSC Group**

BSC Group, Inc.

Rank Company Subsidiary

497 **WDG Architecture**

*WDG Architecture Dallas, PLLC
WDG Interior Architecture, PLLC*

Where the 2022 Top 500 Design Firms Worked

Region Country Company

A. NORTH AMERICA

Canada

AKF Group
AO Architects
Affiliated Engineers Inc.
Anvil Corp.
Arcadis North America/Callison RTKL
Arup
BHDP Architecture
BL Cos. Inc.
Barge Design Solutions
Barr Engineering Co.
Beam Longest & Neff
Bechtel
Black & Veatch
Burns & McDonnell
CDM Smith
CHA Consulting Inc. (CHA)
CONSOR Engineers
COWI North America
CRB
CTL/Thompson Inc.
CannonDesign
Cardno Inc.
Coffman Engineers Inc.
Collins Engineers Inc.
Core States Group
Corgan
Cushing Terrell
D'Amato Conversano Inc. dba DCI
Engineers
DLR Group
Dennis Group
Dunham Associates
EN Engineering LLC
ESP Associates Inc.
EXP
Elkus Manfredi Architects
EnSafe Inc.
Fishbeck

Region Country Company

Flad Architects
Fluor
Foth
Fugro USA
GEI Consultants Inc.
GHD Inc.
GZA
Gannett Fleming
Genesis AEC
Gensler
Geo-Logic Associates Inc.
GeoEngineers Inc.
Geosyntec Consultants
Ghafari Associates LLC
HDR
HEAPY
HKS
HNTB Cos.
HOK
Hanson Professional Services Inc.
Hardesty & Hanover LLC
Hargrove Engineers + Constructors
Hart Howerton
Haskell
Hazen and Sawyer
Henderson Engineers Inc.
Highland Associates
IBI Group Inc.
IMEG Corp.
IPS-Integrated Project Services LLC
Integral Group
Jacobs
Jensen Hughes
KPF Consulting Engineers
Kahler Slater
Kiewit Corp.
Kimley-Horn
Kleinfelder
LANGAN
LEO A DALY
LJB Inc.
LRK Inc.

Where the 2022 Top 500 Design Firms Worked

Region Country Company

Leidos
Little Diversified Architectural Consulting Inc.
Loring Consulting Engineers Inc.
MBH Architects
ME Engineers
Magnusson Klemencic Associates
Martin/Martin Inc.
Matrix Technologies Inc.
Merrick & Co.
Michael Baker International
Modjeski and Masters Inc.
Moffatt & Nichol
Morrison Hershfield
Mott MacDonald
Mueser Rutledge Consulting Engineers PLLC
NORR
Northeast-Western Energy Systems
Otak Inc.
Page
Parsons Corp.
Patrick Engineering Inc.
Perkins Eastman
Perkins&Will
Pond
Populous
Powers Brown Architecture
Primoris
RCM Technologies Inc.
RSP
Raba Kistner Inc.
Rebel Design+Group
Robert A.M. Stern Architects
Ross & Baruzzini Inc.
SCS Engineers
STUDIOS architecture
STV Group Inc.
SYSTRA USA
Salas O'Brien
Sanborn Head & Associates Inc.
Sargent & Lundy

Region Country Company

Sasaki
Shannon & Wilson Inc.
Shepley Bulfinch
Simpson Gumpertz & Heger
Skidmore Owings & Merrill
Smith Seckman Reid Inc.
SmithGroup
Superior Engineering LLC
Syska Hennessy Group
T.Y. Lin International
TEECOM
Terracon Consultants Inc.
Tetra Tech Inc.
The Vertex Cos. Inc.
Thornton Tomasetti
Tower Engineering Professionals
Ulteig Engineers Inc.
United Engineers & Constructors Inc.
V3 Cos.
Vanderweil Engineers
WSP USA
Waldemar S. Nelson and Co. Inc.
Walker Consultants
Walter P Moore
Ware Malcomb
Wiss Janney Elstner Associates
Wood
Woolpert Inc.
Worley
Wunderlich-Malec Engineering Inc.
ZGF Architects
Zachry Group

B. LATIN AMERICA

Argentina

Arcadis North America/Callison RTKL
Bechtel
Black & Veatch
Corgan
Fluor
Gensler

Where the 2022 Top 500 Design Firms Worked

Region Country Company

Geosyntec Consultants
HOK
KPF Consulting Engineers
LANGAN
Moffatt & Nichol
Mott MacDonald
Ross & Baruzzini Inc.
SB Architects
Sargent & Lundy
Sasaki
Simpson Gumpertz & Heger
Skidmore Owings & Merrill
T.Y. Lin International
TRC Cos. Inc.
Thompson Engineering
Thornton Tomasetti

Bolivia

Arcadis North America/Callison RTKL
Merrick & Co.
Page
T.Y. Lin International

Brazil

Arcadis North America/Callison RTKL
Arup
Black & Veatch
COWI North America
Cardno Inc.
Corgan
Day & Zimmermann
DeSimone Consulting Engineers
Dennis Group
Fluor
Fugro USA
Gensler
Geo-Logic Associates Inc.
Geosyntec Consultants
Ghafari Associates LLC
HGA
IPS-Integrated Project Services LLC
Jacobs
Jensen Hughes

Region Country Company

Kimley-Horn
Kohn Pedersen Fox Associates PC
LANGAN
Landrum & Brown Inc.
Leidos
MBH Architects
Michael Baker International
Moffatt & Nichol
Mott MacDonald
Mueser Rutledge Consulting Engineers
PLLC
Otak Inc.
Perkins&Will
RCM Technologies Inc.
Rebel Design+Group
Sargent & Lundy
Shannon & Wilson Inc.
Syska Hennessy Group
T.Y. Lin International
TRC Cos. Inc.
Terracon Consultants Inc.
Thornton Tomasetti
WSP USA
Waldemar S. Nelson and Co. Inc.
Ware Malcomb
Wiss Janney Elstner Associates
Wood
Worley

Chile

Arcadis North America/Callison RTKL
Barr Engineering Co.
Bechtel
Black & Veatch
CDM Smith
COWI North America
Coffman Engineers Inc.
Fluor
GHD Inc.
Gensler
Ghafari Associates LLC
HOK

Where the 2022 Top 500 Design Firms Worked

Region Country Company

Jacobs
Jensen Hughes
KPFK Consulting Engineers
Leidos
MBH Architects
Modjeski and Masters Inc.
Moffatt & Nichol
Mott MacDonald
Otak Inc.
Pond
RSP
Sargent & Lundy
Sasaki
Vanderweil Engineers
WSP USA
Wiss Janney Elstner Associates
Wood

Colombia

Arcadis North America/Callison RTKL
Arup
Black & Veatch
CDM Smith
DeSimone Consulting Engineers
Fugro USA
Gensler
Greeley and Hansen
Haskell
Hazen and Sawyer
IBI Group Inc.
Jensen Hughes
LANGAN
Landrum & Brown Inc.
MBH Architects
Modjeski and Masters Inc.
Moffatt & Nichol
Mott MacDonald
Perkins Eastman
Pond
RSP
S&B Engineers and Constructors Ltd.
SB Architects

Region Country Company

Shannon & Wilson Inc.
Simpson Gumpertz & Heger
T.Y. Lin International
Thornton Tomasetti
WATG
WSP USA
Wood

Costa Rica

Baxter & Woodman Inc.
CTL/Thompson Inc.
DLZ Corp.
Gensler
Hargrove Engineers + Constructors
Hart Howerton
Jensen Hughes
LANGAN
Landrum & Brown Inc.
MBH Architects
Moffatt & Nichol
Mott MacDonald
RSP
Ross & Baruzzini Inc.
SB Architects
Sasaki
Simpson Gumpertz & Heger
SmithGroup
T.Y. Lin International
TRC Cos. Inc.
Thornton Tomasetti
Vanderweil Engineers
WSP USA
Walter P Moore
Wiss Janney Elstner Associates
Woolpert Inc.

Ecuador

Arcadis North America/Callison RTKL
Black & Veatch
Greeley and Hansen
Jaros Baum & Bolles
Jensen Hughes
Landrum & Brown Inc.

Where the 2022 Top 500 Design Firms Worked

Region Country Company

Moffatt & Nichol
Page
Perkins Eastman
Simpson Gumpertz & Heger
T.Y. Lin International
WSP USA

El Salvador

Arcadis North America/Callison RTKL
Black & Veatch
Fluor
Gensler
Jensen Hughes
Moffatt & Nichol
Mott MacDonald
Ross & Baruzzini Inc.
SB Architects
Sargent & Lundy

Guatemala

Arcadis North America/Callison RTKL
Black & Veatch
CHA Consulting Inc. (CHA)
DLZ Corp.
Gensler
Magnusson Klemencic Associates
Mott MacDonald
Page
Thornton Tomasetti
WSP USA
Walter P Moore
Ware Malcomb
Wood

Guyana

Black & Veatch
DLZ Corp.
Fugro USA
Gensler
HOK
Moffatt & Nichol
WATG

Region Country Company

Honduras

Arcadis North America/Callison RTKL
Burns & McDonnell
CHA Consulting Inc. (CHA)
DLZ Corp.
Day & Zimmermann
Fluor
Gensler
Haskell
LANGAN
Moffatt & Nichol
Mott MacDonald
Simpson Gumpertz & Heger
Thornton Tomasetti
WSP USA
Walter P Moore
Wiss Janney Elstner Associates
Wood

Mexico

AKF Group
AO Architects
Arcadis North America/Callison RTKL
Barge Design Solutions
Barr Engineering Co.
Bechtel
Black & Veatch
Burns & McDonnell
CHA Consulting Inc. (CHA)
COWI North America
Clark Nexsen
Coffman Engineers Inc.
Corgan
Cushing Terrell
Dennis Group
EN Engineering LLC
Elkus Manfredi Architects
Fluor
Fugro USA
GEI Consultants Inc.
GZA
Gensler

Where the 2022 Top 500 Design Firms Worked

Region Country Company

Geosyntec Consultants
Ghafari Associates LLC
HKS
HOK
Hanson Professional Services Inc.
Hart Howerton
Haskell
IBI Group Inc.
IMEG Corp.
Jacobs
Jensen Hughes
KPFF Consulting Engineers
Kiewit Corp.
Kimley-Horn
LANGAN
LEO A DALY
LJB Inc.
Leidos
MBH Architects
Magnusson Klemencic Associates
Merrick & Co.
Moffatt & Nichol
Moody Nolan
Mott MacDonald
Ninyo & Moore Geotech. & Enviro.
Sciences
Otak Inc.
Page
Parsons Corp.
Perkins Eastman
Perkins&Will
Pond
Populous
Raba Kistner Inc.
Rebel Design+Group
Ross & Baruzzini Inc.
SB Architects
SCS Engineers
SSOE Group
Salas O'Brien
Sargent & Lundy
Sasaki

Region Country Company

Sheehan Nagle Hartray Architects Ltd.
Simpson Gumpertz & Heger
Skidmore Owings & Merrill
Smith Seckman Reid Inc.
T.Y. Lin International
TPG Architecture LLP
TRC Cos. Inc.
Terracon Consultants Inc.
The Beck Group
Thornton Tomasetti
WATG
WSP USA
Waldemar S. Nelson and Co. Inc.
Walter P Moore
Ware Malcomb
Wiss Janney Elstner Associates
Wood
Worley

Nicaragua

DLZ Corp.
Day & Zimmermann
Gensler
Landrum & Brown Inc.
Moffatt & Nichol
Mott MacDonald

Panama

Arcadis North America/Callison RTKL
Black & Veatch
DLZ Corp.
Fugro USA
Gannett Fleming
Gensler
GeoEngineers Inc.
Geosyntec Consultants
HKS
Hazen and Sawyer
Jensen Hughes
LANGAN
Lanier & Associates Consulting
Engineers Inc.
Magnusson Klemencic Associates

Where the 2022 Top 500 Design Firms Worked

Region Country Company

Moffatt & Nichol
Mott MacDonald
Mueser Rutledge Consulting Engineers
PLLC
Page
Rebel Design+Group
S&B Engineers and Constructors Ltd.
SB Architects
Sargent & Lundy
Simpson Gumpertz & Heger
T.Y. Lin International
Volkert Inc.
WATG
WSP USA
Walker Consultants
Walter P Moore
Ware Malcomb

Paraguay

CHA Consulting Inc. (CHA)
Gensler
KPF Consulting Engineers
Ross & Baruzzini Inc.
ZGF Architects

Peru

Arcadis North America/Callison RTKL
Bechtel
Black & Veatch
Fluor
Fugro USA
Gensler
Geo-Logic Associates Inc.
Geosyntec Consultants
Jacobs
Kohn Pedersen Fox Associates PC
MBH Architects
Martin/Martin Inc.
Moffatt & Nichol
Mott MacDonald
Page
Perkins Eastman
Robert A.M. Stern Architects

Region Country Company

Sargent & Lundy
Sasaki
Simpson Gumpertz & Heger
T.Y. Lin International
TLC Engineering Solutions Inc.
TRC Cos. Inc.
Thompson Engineering
WATG
WSP USA
Wood

Suriname

Arcadis North America/Callison RTKL
Fugro USA
WSP USA

Uruguay

Arcadis North America/Callison RTKL
Corgan
Gensler
Humphreys & Partners Architects
Jensen Hughes
Mott MacDonald
SmithGroup
T.Y. Lin International
Terracon Consultants Inc.
Vanderweil Engineers
WSP USA

Venezuela

Arcadis North America/Callison RTKL

C. CARIBBEAN ISLANDS

Cuba

Burns & McDonnell
Coffman Engineers Inc.
Collins Engineers Inc.
Jensen Hughes
Kimley-Horn
LEO A DALY
Michael Baker International

Where the 2022 Top 500 Design Firms Worked

Region Country Company

Moffatt & Nichol
Pond
Stanley Consultants
TLC Engineering Solutions Inc.
TRC Cos. Inc.
Terracon Consultants Inc.

Greater Antilles

Arcadis North America/Callison RTKL
Barr Engineering Co.
Black & Veatch
EXP
Fugro USA
Gensler
HOK
Hargrove Engineers + Constructors
Hart Howerton
Haskell
IBI Group Inc.
Jensen Hughes
KTGY Architecture + Planning
LEO A DALY
Michael Baker International
Moffatt & Nichol
Mott MacDonald
Rebel Design+Group
Sargent & Lundy
Sasaki
Simpson Gumpertz & Heger
Stanley Consultants
T.Y. Lin International
TLC Engineering Solutions Inc.
Thornton Tomasetti
V3 Cos.
Walter P Moore
Wiss Janney Elstner Associates
Wood

Lesser Antilles

Arcadis North America/Callison RTKL
BRPH Cos. Inc.
Barr Engineering Co.
Bechtel

Region Country Company

Black & Veatch
Burns & McDonnell
CHA Consulting Inc. (CHA)
Collins Engineers Inc.
Corgan
DLR Group
DeSimone Consulting Engineers
EXP
Francis Cauffman Architects
Fugro USA
GEI Consultants Inc.
Gensler
Geosyntec Consultants
HKS
HOK
Hanson Professional Services Inc.
Hart Howerton
Haskell
Jacobs
Jaros Baum & Bolles
Jensen Hughes
Kimley-Horn
LANGAN
LEO A DALY
Landrum & Brown Inc.
Leidos
Moffatt & Nichol
Mott MacDonald
NORR
Page
Parsons Corp.
Perkins Eastman
Perkins&Will
Rebel Design+Group
S&B Engineers and Constructors Ltd.
SB Architects
STUDIOS architecture
Salas O'Brien
Sargent & Lundy
Smith Seckman Reid Inc.
Stanley Consultants
T.Y. Lin International

Where the 2022 Top 500 Design Firms Worked

Region Country Company

TRC Cos. Inc.
Terracon Consultants Inc.
Thornton Tomasetti
Vanderweil Engineers
WATG
WSP USA
Waldemar S. Nelson and Co. Inc.
Wiss Janney Elstner Associates
Woolpert Inc.

Puerto Rico

AKF Group
Arcadis North America/Callison RTKL
BCC Engineering Inc.
BRPH Cos. Inc.
Black & Veatch
Burns & McDonnell
CDM Smith
CPH Inc.
CRB
Civil & Environmental Consultants Inc.
Coffman Engineers Inc.
Collins Engineers Inc.
DLR Group
Dattner Architects
Day & Zimmermann
DeSimone Consulting Engineers
EXP
Engineering Consulting Services (ECS)
Farnsworth Group Inc.
Fluor
Gensler
Geosyntec Consultants
Hanson Professional Services Inc.
Hart Howerton
Jacobs
Jensen Hughes
Kimley-Horn
LANGAN
LEO A DALY
McLaren Engineering Group
Merrick & Co.

Region Country Company

Moffatt & Nichol
Newcomb & Boyd
Parsons Corp.
Perkins Eastman
Pond
RCM Technologies Inc.
Rebel Design+Group
SB Architects
Sargent & Lundy
TRC Cos. Inc.
The Vertex Cos. Inc.
Thornton Tomasetti
Vanderweil Engineers
WATG
WSP USA
Ware Malcomb
Wiss Janney Elstner Associates
Wood
Woolpert Inc.

D. EUROPE

Albania

LANGAN
SB Architects
WATG

Armenia

Black & Veatch
Jacobs
Rebel Design+Group
TRC Cos. Inc.

Austria

Black & Veatch
Burns & McDonnell
CRB
Coffman Engineers Inc.
EnSafe Inc.
HOK
Jacobs
Jensen Hughes

Where the 2022 Top 500 Design Firms Worked

Region Country Company

Kohn Pedersen Fox Associates PC
MBH Architects
Mott MacDonald
Perkins Eastman
Rebel Design+Group
TRC Cos. Inc.

Azerbaijan

Arcadis North America/Callison RTKL
Bechtel
Corgan
Gensler
Jacobs
Jensen Hughes
Perkins Eastman
Sargent & Lundy
Thornton Tomasetti
WSP USA
Wood

Belarus

MBH Architects
Perkins&Will
Thornton Tomasetti

Belgium

Arcadis North America/Callison RTKL
Barr Engineering Co.
Black & Veatch
Burns & McDonnell
CRB
Coffman Engineers Inc.
Fluor
Gensler
Geosyntec Consultants
HDR
HOK
IPS-Integrated Project Services LLC
Jacobs
Jensen Hughes
MBH Architects
Page
Perkins Eastman

Region Country Company

Perkins&Will
Simpson Gumpertz & Heger
Skidmore Owings & Merrill
SmithGroup
Syska Hennessy Group
WSP USA
Wood

Bosnia & Herzegovina

CRB
LANGAN
Perkins&Will
Wiss Janney Elstner Associates

Bulgaria

Black & Veatch
Geo-Logic Associates Inc.
HOK
MBH Architects
TRC Cos. Inc.
Wood

Croatia

HOK
Jacobs
Jensen Hughes
Moffatt & Nichol

Czech Rep.

Arcadis North America/Callison RTKL
Corgan
EN Engineering LLC
EnSafe Inc.
Gensler
HOK
Jensen Hughes
MBH Architects
Perkins Eastman
Perkins&Will
Rebel Design+Group
TRC Cos. Inc.
Wood
Zachry Group

Where the 2022 Top 500 Design Firms Worked

Region Country Company

Denmark

Arcadis North America/Callison RTKL
COWI North America
Corgan
Day & Zimmermann
EXP
EnSafe Inc.
Fluor
Fugro USA
Gensler
Geosyntec Consultants
HDR
HOK
IPS-Integrated Project Services LLC
Jacobs
Jensen Hughes
MBH Architects
Merrick & Co.
Parsons Corp.
Perkins&Will
Rebel Design+Group
Sheehan Nagle Hartray Architects Ltd.
TRC Cos. Inc.
Thornton Tomasetti
WSP USA
Wood

Estonia

Black & Veatch
HDR
LANGAN
MBH Architects
Thornton Tomasetti

Finland

Arcadis North America/Callison RTKL
Fluor
Gensler
Ghafari Associates LLC
HDR
HLW
HOK

Region Country Company

Jacobs
Jensen Hughes
MBH Architects
Martin/Martin Inc.
Perkins&Will
Rebel Design+Group
Simpson Gumpertz & Heger
TRC Cos. Inc.
Thornton Tomasetti

France

Arcadis North America/Callison RTKL
Burns & McDonnell
COWI North America
CRB
Corgan
Fluor
Gensler
Geosyntec Consultants
HDR
HKS
HOK
Hargrove Engineers + Constructors
IPS-Integrated Project Services LLC
Integral Group
Jacobs
Jensen Hughes
KPF Consulting Engineers
Kohn Pedersen Fox Associates PC
LANGAN
MBH Architects
Parsons Corp.
Perkins Eastman
Perkins&Will
Populous
STUDIOS architecture
Sanborn Head & Associates Inc.
Sheehan Nagle Hartray Architects Ltd.
Simpson Gumpertz & Heger
Skidmore Owings & Merrill
T.Y. Lin International
TRC Cos. Inc.

Where the 2022 Top 500 Design Firms Worked

Region Country Company

Thornton Tomasetti
WATG
WSP USA
Wiss Janney Elstner Associates
Wood
Woolpert Inc.

Georgia

Burns & McDonnell
CDM Smith
Gensler
Haskell
Moffatt & Nichol
Otak Inc.
T.Y. Lin International
WATG
ZGF Architects

Germany

Affiliated Engineers Inc.
Arcadis North America/Callison RTKL
Black & Veatch
Burns & McDonnell
CDM Smith
COWI North America
CRB
Coffman Engineers Inc.
Corgan
Dewberry
EXP
Fluor
Fugro USA
Gensler
Geosyntec Consultants
Ghafari Associates LLC
Gresham Smith
HDR
HOK
IPS-Integrated Project Services LLC
Jacobs
Jensen Hughes
Kohn Pedersen Fox Associates PC
LANGAN

Region Country Company

MBH Architects
Martin/Martin Inc.
McLaren Engineering Group
Michael Baker International
Moffatt & Nichol
Page
Parsons Corp.
Perkins Eastman
Perkins&Will
Populous
Rebel Design+Group
Robert A.M. Stern Architects
Ross & Baruzzini Inc.
Smith Seckman Reid Inc.
Stellar
Syska Hennessy Group
TEECOM
TLC Engineering Solutions Inc.
TRC Cos. Inc.
Tetra Tech Inc.
Thornton Tomasetti
WSP USA
Wiss Janney Elstner Associates
Wood
Woolpert Inc.

Greece

CHA Consulting Inc. (CHA)
COWI North America
Day & Zimmermann
Fluor
Gensler
HKS
HOK
IBI Group Inc.
Integral Group
Jacobs
Jensen Hughes
Kimley-Horn
LANGAN
MBH Architects
Martin/Martin Inc.

Where the 2022 Top 500 Design Firms Worked

Region Country Company

Michael Baker International
Moffatt & Nichol
Parsons Corp.
Perkins Eastman
Perkins&Will
Populous
Robert A.M. Stern Architects
Sasaki
TLC Engineering Solutions Inc.
TRC Cos. Inc.
Thornton Tomasetti
WATG

Hungary

Arcadis North America/Callison RTKL
Black & Veatch
Fluor
Ghafari Associates LLC
HOK
Jensen Hughes
MBH Architects
Perkins Eastman
Perkins&Will
Populous
TRC Cos. Inc.
Thornton Tomasetti
WSP USA
Wood

Ireland

Affiliated Engineers Inc.
Arcadis North America/Callison RTKL
BHDP Architecture
Bechtel
Black & Veatch
Burns & McDonnell
CDM Smith
COWI North America
CRB
Corgan
Farnsworth Group Inc.
Fluor
Fugro USA

Region Country Company

GEI Consultants Inc.
Gensler
Geosyntec Consultants
Ghafari Associates LLC
Gresham Smith
HDR
HGA
HOK
IBI Group Inc.
IPS-Integrated Project Services LLC
Jacobs
Jensen Hughes
KPF Consulting Engineers
Kohn Pedersen Fox Associates PC
LANGAN
MBH Architects
Moffatt & Nichol
Page
Parsons Corp.
Perkins Eastman
Perkins&Will
Populous
Robert A.M. Stern Architects
STUDIOS architecture
Sheehan Nagle Hartray Architects Ltd.
Stanley Consultants
TRC Cos. Inc.
Terracon Consultants Inc.
Tetra Tech Inc.
Thornton Tomasetti
WSP USA
Walter P Moore
Wiss Janney Elstner Associates
Wood

Italy

Arcadis North America/Callison RTKL
Burns & McDonnell
Clark Nexsen
Collins Engineers Inc.
Day & Zimmermann
EnSafe Inc.

Where the 2022 Top 500 Design Firms Worked

Region Country Company

Fluor
Gensler
Ghafari Associates LLC
HDR
HKS
HLW
HOK
IPS-Integrated Project Services LLC
Integral Group
Jacobs
Jensen Hughes
KPFF Consulting Engineers
Kohn Pedersen Fox Associates PC
LANGAN
MBH Architects
Michael Baker International
Page
Parkhill
Perkins&Will
Pond
Populous
Rebel Design+Group
Robert A.M. Stern Architects
SB Architects
Sanborn Head & Associates Inc.
Sargent & Lundy
Simpson Gumpertz & Heger
Skidmore Owings & Merrill
SmithGroup
Stanley Consultants
TEECOM
TLC Engineering Solutions Inc.
Thornton Tomasetti
WATG
WSP USA
Waldemar S. Nelson and Co. Inc.
Wiss Janney Elstner Associates
Wood

Latvia

Black & Veatch
Gensler

Region Country Company

Ghafari Associates LLC
Jensen Hughes
MBH Architects
Moffatt & Nichol

Lithuania

Black & Veatch
Fluor
Gensler
HOK
Moffatt & Nichol
Populous

Moldova

Walker Consultants
ZGF Architects

Netherlands

Arcadis North America/Callison RTKL
Black & Veatch
Burns & McDonnell
COWI North America
CRB
Day & Zimmermann
EN Engineering LLC
EXP
Fluor
Gensler
Geosyntec Consultants
HDR
HKS
HOK
Hargrove Engineers + Constructors
IPS-Integrated Project Services LLC
Jacobs
Jensen Hughes
Kohn Pedersen Fox Associates PC
MBH Architects
Moffatt & Nichol
Pond
RCM Technologies Inc.
Rebel Design+Group
Sheehan Nagle Hartray Architects Ltd.

Where the 2022 Top 500 Design Firms Worked

Region Country Company

Smith Seckman Reid Inc.
TRC Cos. Inc.
Thornton Tomasetti
WSP USA
Wiss Janney Elstner Associates

Norway

Black & Veatch
COWI North America
Fluor
Gensler
Geosyntec Consultants
HKS
HOK
Jensen Hughes
MBH Architects
Perkins&Will
Rebel Design+Group
Sheehan Nagle Hartray Architects Ltd.
Stanley Consultants
TRC Cos. Inc.
Thornton Tomasetti
WATG
WSP USA

Poland

Arcadis North America/Callison RTKL
Bechtel
Black & Veatch
Burns & McDonnell
CDM Smith
Fluor
Gensler
HDR
HLW
HOK
Jacobs
Jensen Hughes
Kohn Pedersen Fox Associates PC
MBH Architects
Moffatt & Nichol
Perkins&Will
Sheehan Nagle Hartray Architects Ltd.

Region Country Company

Skidmore Owings & Merrill
T.Y. Lin International
TRC Cos. Inc.
Thornton Tomasetti
WSP USA
Wiss Janney Elstner Associates
Wood

Portugal

Arcadis North America/Callison RTKL
CRB
Dennis Group
Gensler
Hart Howerton
IPS-Integrated Project Services LLC
Jensen Hughes
Kohn Pedersen Fox Associates PC
MBH Architects
Populous
Rebel Design+Group
SB Architects
T.Y. Lin International
TRC Cos. Inc.
Thornton Tomasetti
WATG
Wood

Romania

Black & Veatch
Gensler
HOK
MBH Architects
Sargent & Lundy
TRC Cos. Inc.
WATG
Wood

Russia

Arcadis North America/Callison RTKL
Barr Engineering Co.
CTL/Thompson Inc.
Day & Zimmermann
Fluor

Where the 2022 Top 500 Design Firms Worked

Region Country Company

Gensler
HKS
HOK
Jensen Hughes
MBH Architects
Perkins&Will
Populous
Robert A.M. Stern Architects
SB Architects
Simpson Gumpertz & Heger
Skidmore Owings & Merrill
Stellar
TRC Cos. Inc.
Terracon Consultants Inc.
Thornton Tomasetti
WATG

Serbia

Arcadis North America/Callison RTKL
Bechtel
Black & Veatch
Day & Zimmermann
Gensler
HOK
Integral Group
Jensen Hughes
Newcomb & Boyd
RCM Technologies Inc.
WATG
Walter P Moore

Slovakia

Arcadis North America/Callison RTKL
Burns & McDonnell
Gensler
HOK
Jacobs
Jensen Hughes
LANGAN
MBH Architects
T.Y. Lin International
TRC Cos. Inc.
Wood

Region Country Company

Slovenia

HDR
Jensen Hughes
SSOE Group
Sargent & Lundy
Wiss Janney Elstner Associates
Zachry Group

Spain

Arcadis North America/Callison RTKL
Barr Engineering Co.
Black & Veatch
COWI North America
Clark Nexsen
Fluor
Gensler
HDR
HKS
HOK
IMEG Corp.
IPS-Integrated Project Services LLC
Integral Group
Jacobs
Jensen Hughes
Kimley-Horn
Kohn Pedersen Fox Associates PC
LaBella Associates D.P.C.
MBH Architects
Michael Baker International
Moffatt & Nichol
Page
Perkins Eastman
Perkins&Will
RCM Technologies Inc.
Rebel Design+Group
Ross & Baruzzini Inc.
SB Architects
Sheehan Nagle Hartray Architects Ltd.
Stanley Consultants
T.Y. Lin International
TLC Engineering Solutions Inc.
TRC Cos. Inc.

Where the 2022 Top 500 Design Firms Worked

Region Country Company

WATG
WSP USA
Wiss Janney Elstner Associates
Wood
Worley
Zachry Group

Sweden

Arcadis North America/Callison RTKL
CHA Consulting Inc. (CHA)
COWI North America
Fluor
Gensler
Geosyntec Consultants
HDR
HOK
Jacobs
Jensen Hughes
MBH Architects
Moffatt & Nichol
Perkins&Will
Rebel Design+Group
Sheehan Nagle Hartray Architects Ltd.
Simpson Gumpertz & Heger
Skidmore Owings & Merrill
T.Y. Lin International
TRC Cos. Inc.
Thornton Tomasetti
WSP USA
Wood

Switzerland

Arcadis North America/Callison RTKL
Burns & McDonnell
CRB
Corgan
Fluor
Gensler
HDR
HKS
HOK
IPS-Integrated Project Services LLC
Jacobs

Region Country Company

Jensen Hughes
LANGAN
MBH Architects
Moffatt & Nichol
Perkins&Will
Populous
Rebel Design+Group
SB Architects
Skidmore Owings & Merrill
WSP USA
Wood

Ukraine

Bechtel
Black & Veatch
Day & Zimmermann
MBH Architects
Parsons Corp.
Perkins Eastman
Perkins&Will
STUDIOS architecture
Sargent & Lundy

United Kingdom

Affiliated Engineers Inc.
Arcadis North America/Callison RTKL
BHDP Architecture
BRPH Cos. Inc.
Bechtel
Black & Veatch
Burns & McDonnell
COWI North America
CRB
Corgan
Cunningham
DeSimone Consulting Engineers
Fluor
Fugro USA
Gensler
Geosyntec Consultants
HDR
HKS
HLW

Where the 2022 Top 500 Design Firms Worked

Region Country Company

HOK
Hardesty & Hanover LLC
Hargrove Engineers + Constructors
Hart Howerton
IBI Group Inc.
IPS-Integrated Project Services LLC
Integral Group
Jacobs
Jensen Hughes
KPFK Consulting Engineers
KZF Design
Kimley-Horn
Kohn Pedersen Fox Associates PC
LANGAN
Leidos
MBH Architects
ME Engineers
McLaren Engineering Group
Merrick & Co.
Michael Baker International
Moffatt & Nichol
Mott MacDonald
NORR
Otak Inc.
Page
Parsons Corp.
Perkins Eastman
Perkins&Will
Pond
Populous
RCM Technologies Inc.
RSP
Rebel Design+Group
Robert A.M. Stern Architects
Sargent & Lundy
Sheehan Nagle Hartray Architects Ltd.
Shepley Bulfinch
Simpson Gumpertz & Heger
Skidmore Owings & Merrill
Stanley Consultants
Syska Hennessy Group
TEECOM

Region Country Company

TLC Engineering Solutions Inc.
TPG Architecture LLP
TRC Cos. Inc.
Terracon Consultants Inc.
Tetra Tech Inc.
Thornton Tomasetti
WATG
WSP USA
Wiss Janney Elstner Associates
Wood
Woolpert Inc.
Worley

E. MIDDLE EAST

Afghanistan

Black & Veatch
CHA Consulting Inc. (CHA)
Day & Zimmermann
Pond
Sasaki
Thornton Tomasetti

Bahrain

Bechtel
CHA Consulting Inc. (CHA)
Gensler
HDR
HOK
Jacobs
Jensen Hughes
MBH Architects
Parsons Corp.
Perkins Eastman
Perkins&Will
Populous
Skidmore Owings & Merrill
Stanley Consultants
WATG
Worley

Where the 2022 Top 500 Design Firms Worked

Region Country Company

Cyprus

Day & Zimmermann
HKS
Jensen Hughes
LANGAN
MBH Architects
SB Architects
Thornton Tomasetti
WATG
WSP USA

Iraq

Black & Veatch
CHA Consulting Inc. (CHA)
COWI North America
Day & Zimmermann
EYP Architecture & Engineering
Fluor
Ghafari Associates LLC
HKS
Jacobs
Moffatt & Nichol
Parsons Corp.
RCM Technologies Inc.
Sargent & Lundy
Thornton Tomasetti

Israel

Affiliated Engineers Inc.
Arcadis North America/Callison RTKL
Black & Veatch
CDM Smith
CHA Consulting Inc. (CHA)
HDR
HOK
Hazen and Sawyer
IBI Group Inc.
Jacobs
Jensen Hughes
Kohn Pedersen Fox Associates PC
MBH Architects
Modjeski and Masters Inc.

Region Country Company

Moffatt & Nichol
Page
Perkins Eastman
Populous
Robert A.M. Stern Architects
SSOE Group
Sargent & Lundy
Simpson Gumpertz & Heger
Skidmore Owings & Merrill
Syska Hennessy Group
TLC Engineering Solutions Inc.
TRC Cos. Inc.
Thornton Tomasetti
WSP USA

Jordan

Barr Engineering Co.
CDM Smith
Geosyntec Consultants
HOK
Hargrove Engineers + Constructors
Jacobs
Jensen Hughes
LANGAN
Magnusson Klemencic Associates
Michael Baker International
Page
Perkins Eastman
Perkins&Will
Sargent & Lundy
Stanley Consultants
T.Y. Lin International
TRC Cos. Inc.
Vanderweil Engineers
Wiss Janney Elstner Associates

Kuwait

Arcadis North America/Callison RTKL
CDM Smith
Fluor
Geosyntec Consultants
HOK
Hanson Professional Services Inc.

Where the 2022 Top 500 Design Firms Worked

Region Country Company

Jacobs
Jensen Hughes
Kohn Pedersen Fox Associates PC
MBH Architects
Michael Baker International
Moody Nolan
Page
Parsons Corp.
Perkins Eastman
Perkins&Will
Rebel Design+Group
Skidmore Owings & Merrill
T.Y. Lin International
Thornton Tomasetti
WSP USA
Walker Consultants
Wiss Janney Elstner Associates
Wood
Worley

Lebanon

Day & Zimmermann
HOK
Jensen Hughes
Page
Sasaki
T.Y. Lin International
Tetra Tech Inc.
Thornton Tomasetti
Wiss Janney Elstner Associates

Oman

Bechtel
Black & Veatch
CDM Smith
Fluor
Gensler
Ghafari Associates LLC
HOK
Jensen Hughes
LANGAN
MBH Architects
Parsons Corp.

Region Country Company

Perkins Eastman
Perkins&Will
Skidmore Owings & Merrill
Tetra Tech Inc.
Wood

Pakistan

AI Engineers Inc.
Barr Engineering Co.
Black & Veatch
CDM Smith
HKS
HOK
Hanson Professional Services Inc.
Jensen Hughes
Page
Sargent & Lundy
Schmidt Associates
T.Y. Lin International
WATG
Wood

Qatar

BRPH Cos. Inc.
Black & Veatch
Burns & McDonnell
CDM Smith
COWI North America
Cunningham
Day & Zimmermann
Flad Architects
Fluor
Gannett Fleming
HDR
HKS
HOK
Jacobs
Jensen Hughes
LANGAN
LEO A DALY
Landrum & Brown Inc.
MBH Architects
Michael Baker International

Where the 2022 Top 500 Design Firms Worked

Region Country Company

Moffatt & Nichol
Moody Nolan
Mott MacDonald
Page
Parsons Corp.
Perkins Eastman
Perkins&Will
Rebel Design+Group
Ross & Baruzzini Inc.
Sargent & Lundy
Simpson Gumpertz & Heger
SmithGroup
Thornton Tomasetti
WATG
Wiss Janney Elstner Associates
Wood

Saudi Arabia

Arcadis North America/Callison RTKL
Ayers Saint Gross
BRPH Cos. Inc.
Bechtel
Black & Veatch
Burns & McDonnell
CDM Smith
CHA Consulting Inc. (CHA)
COWI North America
Cooper Carry
Corgan
DLR Group
Day & Zimmermann
Fluor
GEI Consultants Inc.
Gensler
GeoEngineers Inc.
Geosyntec Consultants
Ghafari Associates LLC
HDR
HKS
HOK
IBI Group Inc.
Integral Group

Region Country Company

Jacobs
Jaros Baum & Bolles
Jensen Hughes
KPF Consulting Engineers
LANGAN
LEO A DALY
Landrum & Brown Inc.
Leidos
MBH Architects
ME Engineers
McLaren Engineering Group
Michael Baker International
Moffatt & Nichol
Moody Nolan
Morrison Hershfield
Mott MacDonald
NORR
Page
Parsons Corp.
Perkins Eastman
Perkins&Will
Populous
Rebel Design+Group
Robert A.M. Stern Architects
Ross & Baruzzini Inc.
SB Architects
SYSTRA USA
Sargent & Lundy
Sasaki
Simpson Gumpertz & Heger
Skidmore Owings & Merrill
Stanley Consultants
Syska Hennessy Group
T.Y. Lin International
TEECOM
Terracon Consultants Inc.
Thornton Tomasetti
Vanderweil Engineers
WATG
Walker Consultants
Ware Malcomb
Wiss Janney Elstner Associates

Where the 2022 Top 500 Design Firms Worked

Region Country Company

Wood
Worley
Zachry Group

Turkey

Black & Veatch
CHA Consulting Inc. (CHA)
Fluor
Gensler
Geo-Logic Associates Inc.
Ghafari Associates LLC
HDR
HKS
Jensen Hughes
KPFF Consulting Engineers
Kohn Pedersen Fox Associates PC
Leidos
MBH Architects
Michael Baker International
Moffatt & Nichol
Page
Parsons Corp.
Perkins Eastman
Perkins&Will
Robert A.M. Stern Architects
Sargent & Lundy
Simpson Gumpertz & Heger
Skidmore Owings & Merrill
TRC Cos. Inc.
Thornton Tomasetti
WATG
WSP USA
Wood

United Arab Emirates

Arcadis North America/Callison RTKL
Bechtel
Black & Veatch
Burns & McDonnell
CDM Smith
COWI North America
Coffman Engineers Inc.
Cushing Terrell

Region Country Company

DLR Group
DeSimone Consulting Engineers
ENERCON
Fluor
Gensler
Geosyntec Consultants
Ghafari Associates LLC
HDR
HKS
HOK
IBI Group Inc.
Jacobs
Jensen Hughes
KPFF Consulting Engineers
Kirksey Architects Inc.
Kohn Pedersen Fox Associates PC
LANGAN
LEO A DALY
Landrum & Brown Inc.
MBH Architects
McLaren Engineering Group
Moffatt & Nichol
Moody Nolan
Mott MacDonald
NORR
NV5 Global Inc.
Page
Parsons Corp.
Perkins Eastman
Perkins&Will
Populous
Rebel Design+Group
Ross & Baruzzini Inc.
SB Architects
SYSTRA USA
Sargent & Lundy
Sasaki
Simpson Gumpertz & Heger
Skidmore Owings & Merrill
Stanley Consultants
Syska Hennessy Group
T.Y. Lin International

Where the 2022 Top 500 Design Firms Worked

Region Country Company

TRC Cos. Inc.
Thornton Tomasetti
WATG
WSP USA
Walker Consultants
Walter P Moore
Wiss Janney Elstner Associates
Wood
Zachry Group

F. ASIA

Bangladesh

Black & Veatch
COWI North America
HOK
Jensen Hughes
Perkins Eastman
Sargent & Lundy
Skidmore Owings & Merrill
TRC Cos. Inc.
Thornton Tomasetti
WATG
Wiss Janney Elstner Associates

Cambodia

Gensler
Jensen Hughes
Kohn Pedersen Fox Associates PC
Otak Inc.
Perkins Eastman
WATG

China (P.R.C.)

AO Architects
Affiliated Engineers Inc.
Arcadis North America/Callison RTKL
Ayers Saint Gross
BRPH Cos. Inc.
Black & Veatch
CHA Consulting Inc. (CHA)
CRB

Region Country Company

Corgan
Cunningham
DLR Group
Day & Zimmermann
Fluor
GBBN
Gensler
GeoEngineers Inc.
Gresham Smith
HDR
HKS
HOK
Haskell
IPS-Integrated Project Services LLC
Integral Group
Jacobs
Jensen Hughes
Kohn Pedersen Fox Associates PC
LEO A DALY
Landrum & Brown Inc.
MBH Architects
McLaren Engineering Group
Moffatt & Nichol
NV5 Global Inc.
Newcomb & Boyd
Page
Perkins Eastman
Perkins&Will
Populous
Rebel Design+Group
Robert A.M. Stern Architects
Ross & Baruzzini Inc.
SB Architects
SSOE Group
Salas O'Brien
Sanborn Head & Associates Inc.
Sargent & Lundy
Sasaki
Simpson Gumpertz & Heger
Skidmore Owings & Merrill
SmithGroup
Steinberg Hart

Where the 2022 Top 500 Design Firms Worked

Region Country Company

Syska Hennessy Group
T.Y. Lin International
TEECOM
TRC Cos. Inc.
Thornton Tomasetti
Vanderweil Engineers
WATG
WSP USA
Walter P Moore
Ware Malcomb
Wood
ZGF Architects
Zachry Group

Diego Garcia

Arcadis North America/Callison RTKL
BRPH Cos. Inc.
Black & Veatch
Gensler
HOK
NV5 Global Inc.
Perkins Eastman
Populous
Rebel Design+Group
Robert A.M. Stern Architects
WATG
Wiss Janney Elstner Associates

Hong Kong (P.R.C.)

Arcadis North America/Callison RTKL
Ayers Saint Gross
Black & Veatch
Corgan
Day & Zimmermann
Gensler
HKS
HOK
IBI Group Inc.
Jacobs
Kohn Pedersen Fox Associates PC
LEO A DALY
McLaren Engineering Group
Moody Nolan

Region Country Company

Mott MacDonald
NV5 Global Inc.
Parsons Corp.
Perkins Eastman
Populous
Robert A.M. Stern Architects
Skidmore Owings & Merrill
TEECOM
WSP USA
Wunderlich-Malec Engineering Inc.

India

AO Architects
Arcadis North America/Callison RTKL
Bechtel
Black & Veatch
CDM Smith
CHA Consulting Inc. (CHA)
CRB
CannonDesign
Coffman Engineers Inc.
Corgan
DLZ Corp.
Fluor
Gensler
HDR
HKS
HOK
Hanson Professional Services Inc.
IBI Group Inc.
IPS-Integrated Project Services LLC
Jacobs
Jensen Hughes
KPFF Consulting Engineers
Kohn Pedersen Fox Associates PC
LANGAN
Landrum & Brown Inc.
Leidos
MBH Architects
ME Engineers
Magnusson Klemencic Associates
Modjeski and Masters Inc.

Where the 2022 Top 500 Design Firms Worked

Region Country Company

Moffatt & Nichol
Moody Nolan
NV5 Global Inc.
Page
Perkins Eastman
Perkins&Will
Populous
RSP
Ross & Baruzzini Inc.
S&B Engineers and Constructors Ltd.
SSOE Group
Sargent & Lundy
Sasaki
Skidmore Owings & Merrill
Smith Seckman Reid Inc.
Stanley Consultants
T.Y. Lin International
TEECOM
TRC Cos. Inc.
Thornton Tomasetti
WATG
WSP USA
Walter P Moore
Wiss Janney Elstner Associates
Wood

Indonesia

AO Architects
Arcadis North America/Callison RTKL
Bechtel
Black & Veatch
CDM Smith
Day & Zimmermann
Fluor
Fugro USA
GAI Consultants Inc.
Gensler
HGA
Jacobs
Jensen Hughes
Kohn Pedersen Fox Associates PC
LANGAN

Region Country Company

Landrum & Brown Inc.
MBH Architects
Magnusson Klemencic Associates
Page
SB Architects
Sargent & Lundy
Sasaki
Skidmore Owings & Merrill
T.Y. Lin International
TEECOM
Thornton Tomasetti
WATG
WSP USA
Waldemar S. Nelson and Co. Inc.

Japan

AHL
AO Architects
Arcadis North America/Callison RTKL
Bechtel
Black & Veatch
Burns & McDonnell
CHA Consulting Inc. (CHA)
CRB
Coffman Engineers Inc.
Corgan
Cushing Terrell
Dewberry
EXP
Elkus Manfredi Architects
Fluor
Gensler
GeoEngineers Inc.
HDR
HKS
HOK
Jacobs
Jensen Hughes
KPF Consulting Engineers
KZF Design
Kohn Pedersen Fox Associates PC
Landrum & Brown Inc.

Where the 2022 Top 500 Design Firms Worked

Region Country Company

MBH Architects
Merrick & Co.
Michael Baker International
Moffatt & Nichol
Newcomb & Boyd
Northeast-Western Energy Systems
Parkhill
Parsons Corp.
Perkins Eastman
Perkins&Will
Pond
Populous
RCM Technologies Inc.
Rebel Design+Group
Robert A.M. Stern Architects
Simpson Gumpertz & Heger
Skidmore Owings & Merrill
Smith Seckman Reid Inc.
Stanley Consultants
TEECOM
TLC Engineering Solutions Inc.
Thornton Tomasetti
WATG
WSP USA
Wiss Janney Elstner Associates
Wood
Woolpert Inc.
ZGF Architects
Zachry Group

Kazakhstan

Arcadis North America/Callison RTKL
Bechtel
Fluor
Gensler
HGA
HOK
Jensen Hughes
LANGAN
Martin/Martin Inc.
Perkins Eastman
Perkins&Will

Region Country Company

Robert A.M. Stern Architects
Skidmore Owings & Merrill
Tetra Tech Inc.
Thornton Tomasetti
WSP USA

Korea, South

AO Architects
Affiliated Engineers Inc.
Arcadis North America/Callison RTKL
Black & Veatch
Burns & McDonnell
CHA Consulting Inc. (CHA)
CRB
Coffman Engineers Inc.
Collins Engineers Inc.
Cushing Terrell
Day & Zimmermann
EXP
Fluor
Gensler
Geosyntec Consultants
HDR
HEAPY
HKS
Jacobs
Jensen Hughes
KPF Consulting Engineers
KZF Design
Kohn Pedersen Fox Associates PC
MBH Architects
Michael Baker International
Mott MacDonald
Parsons Corp.
Perkins&Will
Pond
Robert A.M. Stern Architects
STUDIOS architecture
Sargent & Lundy
Simpson Gumpertz & Heger
Skidmore Owings & Merrill
SmithGroup

Where the 2022 Top 500 Design Firms Worked

Region Country Company

Stanley Consultants
Thornton Tomasetti
WATG
Wiss Janney Elstner Associates
ZGF Architects
Zachry Group

Kyrgyzstan

HOK

Laos

Black & Veatch
Otak Inc.
Perkins Eastman

Malaysia

AO Architects
Arcadis North America/Callison RTKL
Black & Veatch
Corgan
Fluor
Gensler
Geosyntec Consultants
HDR
HOK
Haskell
Jacobs
Jensen Hughes
Kohn Pedersen Fox Associates PC
LANGAN
Landrum & Brown Inc.
MBH Architects
Moody Nolan
NV5 Global Inc.
Newcomb & Boyd
Perkins Eastman
Sargent & Lundy
Sasaki
Skidmore Owings & Merrill
T.Y. Lin International
TRC Cos. Inc.
Thornton Tomasetti
WATG

Region Country Company

WSP USA
Wood

Mongolia

Black & Veatch
Jensen Hughes
Perkins&Will
Sargent & Lundy
Wiss Janney Elstner Associates

Myanmar (Burma)

HOK
LANGAN
Thornton Tomasetti

Nepal

CDM Smith
Jensen Hughes
LANGAN
Magnusson Klemencic Associates
Otak Inc.
Simpson Gumpertz & Heger

Philippines

AO Architects
Arcadis North America/Callison RTKL
Black & Veatch
Burns & McDonnell
Fluor
Gensler
Ghafari Associates LLC
HOK
Haskell
Jacobs
Jensen Hughes
KPF Consulting Engineers
LANGAN
Landrum & Brown Inc.
Leidos
Magnusson Klemencic Associates
Moffatt & Nichol
Populous
Ross & Baruzzini Inc.

Where the 2022 Top 500 Design Firms Worked

Region Country Company

SB Architects
Sargent & Lundy
Simpson Gumpertz & Heger
Skidmore Owings & Merrill
SmithGroup
Stanley Consultants
Syska Hennessy Group
T.Y. Lin International
TRC Cos. Inc.
Thornton Tomasetti
WATG
WSP USA
Wiss Janney Elstner Associates

Singapore

Arcadis North America/Callison RTKL
Black & Veatch
Burns & McDonnell
Coffman Engineers Inc.
Fugro USA
Gensler
HDR
HKS
HOK
Haskell
IPS-Integrated Project Services LLC
Jacobs
Jensen Hughes
Kahler Slater
Kimley-Horn
Kohn Pedersen Fox Associates PC
Landrum & Brown Inc.
MBH Architects
McLaren Engineering Group
Merrick & Co.
Moffatt & Nichol
Moody Nolan
Mott MacDonald
NV5 Global Inc.
Parsons Corp.
Perkins Eastman
Perkins&Will

Region Country Company

Populous
Skidmore Owings & Merrill
T.Y. Lin International
TRC Cos. Inc.
Terracon Consultants Inc.
Thornton Tomasetti
Vanderweil Engineers
WATG
WSP USA
Waldemar S. Nelson and Co. Inc.
Wood
Worley

Sri Lanka

Arcadis North America/Callison RTKL
Black & Veatch
CHA Consulting Inc. (CHA)
Coffman Engineers Inc.
Gensler
Hanson Professional Services Inc.
Jacobs
Jensen Hughes
LANGAN
Perkins Eastman
Skidmore Owings & Merrill
WATG
ZGF Architects

Taiwan (R.O.C)

Affiliated Engineers Inc.
Arcadis North America/Callison RTKL
Bechtel
Black & Veatch
Burns & McDonnell
Gensler
HOK
Jacobs
Jensen Hughes
Kohn Pedersen Fox Associates PC
Landrum & Brown Inc.
MBH Architects
Merrick & Co.
Newcomb & Boyd

Where the 2022 Top 500 Design Firms Worked

Region Country Company

Page

Parsons Corp.

Skidmore Owings & Merrill

Stanley Consultants

T.Y. Lin International

WATG

WSP USA

Wood

Tajikistan

Sasaki

Thailand

AO Architects

BRPH Cos. Inc.

Bechtel

Black & Veatch

CHA Consulting Inc. (CHA)

Fluor

Gensler

HOK

Hart Howerton

Jacobs

Jensen Hughes

KPF Consulting Engineers

Kohn Pedersen Fox Associates PC

LANGAN

Leidos

MBH Architects

Moffatt & Nichol

Moody Nolan

Page

Perkins Eastman

Populous

Rebel Design+Group

Simpson Gumpertz & Heger

Skidmore Owings & Merrill

Stanley Consultants

TRC Cos. Inc.

Thornton Tomasetti

WATG

Region Country Company

Uzbekistan

Bechtel

Black & Veatch

Day & Zimmermann

Fluor

Jensen Hughes

Otak Inc.

Sargent & Lundy

Vietnam

Arcadis North America/Callison RTKL

Bechtel

Black & Veatch

CDM Smith

Cardno Inc.

Day & Zimmermann

EYP Architecture & Engineering

Gensler

HOK

Jensen Hughes

KPF Consulting Engineers

Kohn Pedersen Fox Associates PC

LANGAN

MBH Architects

Moffatt & Nichol

Page

Perkins Eastman

SB Architects

Sasaki

Skidmore Owings & Merrill

T.Y. Lin International

TRC Cos. Inc.

Thornton Tomasetti

WATG

G. AUSTRALIA/OCEANIA

Australia

Arcadis North America/Callison RTKL

BRPH Cos. Inc.

Bechtel

Where the 2022 Top 500 Design Firms Worked

Region Country Company

Black & Veatch
CDM Smith
CRB
Cardno Inc.
Coffman Engineers Inc.
Corgan
Flad Architects
Fluor
Fugro USA
GEI Consultants Inc.
Gensler
Geosyntec Consultants
HDR
HKS
HOK
Hazen and Sawyer
Integral Group
Jacobs
Jensen Hughes
KPFF Consulting Engineers
Kimley-Horn
Kleinfelder
Kohn Pedersen Fox Associates PC
Landrum & Brown Inc.
Moffatt & Nichol
Mott MacDonald
Newcomb & Boyd
Perkins Eastman
Perkins&Will
Populous
Rebel Design+Group
SSOE Group
STUDIOS architecture
Simpson Gumpertz & Heger
Skidmore Owings & Merrill
Syska Hennessy Group
TEECOM
TLC Engineering Solutions Inc.
TRC Cos. Inc.
Tetra Tech Inc.
Thornton Tomasetti
WSP USA

Region Country Company

Wiss Janney Elstner Associates
Wood
Woolpert Inc.
Worley
ZGF Architects

New Zealand

Black & Veatch
Fugro USA
Gensler
Geosyntec Consultants
HDR
Integral Group
Jacobs
Jensen Hughes
KPFF Consulting Engineers
Magnusson Klemencic Associates
Merrick & Co.
Mott MacDonald
Populous
Simpson Gumpertz & Heger
TRC Cos. Inc.
Terracon Consultants Inc.
Tetra Tech Inc.
Thornton Tomasetti
WSP USA
Walter P Moore
Woolpert Inc.

Pacific Islands

BRPH Cos. Inc.
Black & Veatch
CTL/Thompson Inc.
Clark Nexsen
Coffman Engineers Inc.
Gensler
Geosyntec Consultants
Group 70 International Inc. dba G70
Jensen Hughes
Kleinfelder
Landrum & Brown Inc.
Martin/Martin Inc.
Otak Inc.

Where the 2022 Top 500 Design Firms Worked

Region Country Company

Parsons Corp.
The Vertex Cos. Inc.
WATG
Wiss Janney Elstner Associates
Woolpert Inc.

Papua New Guinea

Burns & McDonnell
Day & Zimmermann
Jensen Hughes
Magnusson Klemencic Associates
Otak Inc.
Thornton Tomasetti

H. NORTH AFRICA

Algeria

Arcadis North America/Callison RTKL
HOK
Perkins Eastman

Egypt

Ayers Saint Gross
Bechtel
Black & Veatch
Burns & McDonnell
CDM Smith
Fluor
Gensler
HKS
HOK
Jacobs
Jensen Hughes
LANGAN
Magnusson Klemencic Associates
NORR
Parsons Corp.
Perkins Eastman
Perkins&Will
SB Architects
Sargent & Lundy
Sasaki

Region Country Company

Simpson Gumpertz & Heger
Skidmore Owings & Merrill
SmithGroup
T.Y. Lin International
Thornton Tomasetti
WATG
Walker Consultants
Wood

Ethiopia

Arcadis North America/Callison RTKL
Black & Veatch
HDR
Jensen Hughes
Sasaki
T.Y. Lin International

Libya

Perkins Eastman

Morocco

Arcadis North America/Callison RTKL
Barr Engineering Co.
Black & Veatch
Day & Zimmermann
Gensler
HKS
IPS-Integrated Project Services LLC
Jacobs
Jensen Hughes
LANGAN
Magnusson Klemencic Associates
Moffatt & Nichol
Perkins Eastman
Rebel Design+Group
STUDIOS architecture
Sargent & Lundy
Tetra Tech Inc.
Thornton Tomasetti
WATG
Wiss Janney Elstner Associates
Worley

Where the 2022 Top 500 Design Firms Worked

Region Country Company

Niger

CHA Consulting Inc. (CHA)
Corgan
Day & Zimmermann
Day & Zimmermann
EN Engineering LLC
EYP Architecture & Engineering
Gensler
GeoEngineers Inc.
HOK
Jensen Hughes
KPFF Consulting Engineers
LANGAN
Moffatt & Nichol
Page
Perkins Eastman
Perkins&Will
SmithGroup
T.Y. Lin International
T.Y. Lin International
TRC Cos. Inc.
Thornton Tomasetti
WSP USA
Walter P Moore
Wiss Janney Elstner Associates
Woolpert Inc.

Sub Sahara

Barr Engineering Co.
Clark Nexsen
Day & Zimmermann
HGA
Jensen Hughes
KPFF Consulting Engineers
Page
Perkins&Will
T.Y. Lin International
Terracon Consultants Inc.
Thornton Tomasetti

Sudan

LEO A DALY

Region Country Company

Magnusson Klemencic Associates
Thornton Tomasetti

Tunisia

Gensler
Jensen Hughes
KPFF Consulting Engineers
LANGAN
Sargent & Lundy
WATG

I. CENTRAL AND SOUTHERN AFRICA

Angola

Bechtel
Flad Architects
Perkins&Will
T.Y. Lin International
Wiss Janney Elstner Associates
Wood

Benin

WATG

Botswana

Black & Veatch
Fluor
Jensen Hughes

Burkina Faso

Fluor
LANGAN
Page
Thornton Tomasetti

Cameroon

Arcadis North America/Callison RTKL
Black & Veatch
HKS
Jensen Hughes
Page

Where the 2022 Top 500 Design Firms Worked

Region Country Company

Sargent & Lundy
Waldemar S. Nelson and Co. Inc.

Cape Verde Islands

Jensen Hughes

Congo

CHA Consulting Inc. (CHA)
Coffman Engineers Inc.
Day & Zimmermann
Jensen Hughes
LANGAN
Thornton Tomasetti
Wiss Janney Elstner Associates

D.R. Congo (Zaire)

Page
Thornton Tomasetti

Gabon

Bechtel
HDR

Ghana

Gensler
Ghafari Associates LLC
Jensen Hughes
Mott MacDonald
Terracon Consultants Inc.

Guinea

Fluor
KPF Consulting Engineers
Sargent & Lundy
Waldemar S. Nelson and Co. Inc.

Ivory Coast

Jensen Hughes
NORR

Kenya

Black & Veatch
CHA Consulting Inc. (CHA)

Region Country Company

COWI North America
Day & Zimmermann
Jensen Hughes
LANGAN
Merrick & Co.
Robert A.M. Stern Architects
Thornton Tomasetti
Vanderweil Engineers

Lesotho

CDM Smith

Liberia

Geo-Logic Associates Inc.
Moffatt & Nichol

Malawi

Day & Zimmermann
Magnusson Klemencic Associates
Page

Mozambique

CHA Consulting Inc. (CHA)
Fluor
Geosyntec Consultants
HDR
HOK
Jensen Hughes
KPF Consulting Engineers
Moffatt & Nichol
Page
Perkins&Will
TRC Cos. Inc.

Rwanda

Black & Veatch
Ghafari Associates LLC
Jensen Hughes
Landrum & Brown Inc.
Ross & Baruzzini Inc.
T.Y. Lin International

Where the 2022 Top 500 Design Firms Worked

Region Country Company

Senegal

AO Architects
Black & Veatch
Jensen Hughes
Perkins Eastman
Sargent & Lundy

Sierra Leone

KPFF Consulting Engineers
Wiss Janney Elstner Associates

South Africa

Arcadis North America/Callison RTKL
Black & Veatch
Burns & McDonnell
CDM Smith
Fluor
Gensler
Geosyntec Consultants
HDR
HOK
Haskell
Jacobs
Jensen Hughes
KPFF Consulting Engineers
LANGAN
MBH Architects
Sargent & Lundy
TRC Cos. Inc.
WSP USA
Wiss Janney Elstner Associates
Wood
Woolpert Inc.

Tanzania

Bechtel
CDM Smith
CHA Consulting Inc. (CHA)
HOK
Perkins Eastman
T.Y. Lin International

Region Country Company

Uganda

Black & Veatch
Jensen Hughes
KPFF Consulting Engineers
Perkins Eastman
Ross & Baruzzini Inc.
Wiss Janney Elstner Associates

Zambia

Day & Zimmermann
Fluor
Jensen Hughes
WSP USA

Zimbabwe

Gensler
LANGAN
Page
TLC Engineering Solutions Inc.

J. ANTARCTIC/ARCTIC

Antarctic/Artic

Coffman Engineers Inc.
GeoEngineers Inc.
HDR
Leidos
Martin/Martin Inc.
Merrick & Co.
NORR
R&M Consultants Inc.
Ross & Baruzzini Inc.
Simpson Gumpertz & Heger